

**DATASHEET**

**CTPS Rabbit Polyclonal Antibody**

CAT. NO. APA06863

**KEY FEATURES**

Target	CTPS	Source / Host	Rabbit
Reactivity	Human, Mouse	Clonality	Polyclonal
Applications	WB	Conjugation	Unconjugated
Form / Buffer	Liquid in 0.42% Potassium phosphate, 0.87% Sodium chloride, pH 7.3, 30% glycerol, and 0.01% sodium azide.		Storage at -20°C

**BACKGROUND**

CTP synthase involved in the de novo synthesis of CTP, a precursor of DNA, RNA and phospholipids . Catalyzes the ATP-dependent amination of UTP to CTP with either L-glutamine or ammonia as a source of nitrogen . CTPS1 CTP synthase activity plays a crucial role in the proliferation of activated lymphocytes and immunity; additional CTP being required to meet increased demand for DNA, RNA and lipid membrane biosynthesis in proliferating lymphocytes . In addition to CTP synthase activity, also acts as a protein deamidase that catalyzes the side chain deamidation of specific asparagine residues of proteins to aspartate . Acts as a negative regulator of innate immunity by mediating deamidation of 'Asn-85' of IRF3, preventing IRF3 from binding DNA .

**APPLICATION**

To ensure optimal assay performance, AREX recommends conducting reagent titration tailored to each testing system for optimal detection results.

WB	1:500 - 1:1000
----	----------------

\*Results are sample-specific. Please refer to your local assay conditions and test parameters for reference.

**PRODUCT OVERVIEW**

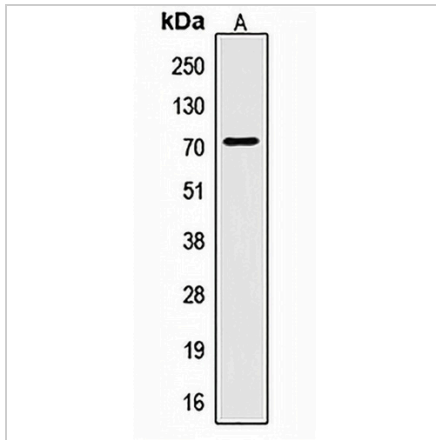
Description	Rabbit polyclonal antibody to CTPS
Specificity	Recognizes endogenous levels of CTPS protein.
Antibody Type	Primary antibody
Immunogen	KLH-conjugated synthetic peptide encompassing a sequence within the N-term region of human CTPS. The exact sequence is proprietary.
Purification	The antibody was purified by immunogen affinity chromatography.
Molecular Weight	Predicted: 41; Observed: 80 kD
Form/Buffer	Liquid in 0.42% Potassium phosphate, 0.87% Sodium chloride, pH 7.3, 30% glycerol, and 0.01% sodium azide.
Alternative Names	CTPS; CTP synthase 1; CTP synthetase 1; UTP--ammonia ligase 1
Gene Symbol	CTPS1
Entrez Gene	1503(Human); 51797(Mouse)
SwissProt	P17812(Human); P70698(Mouse)

\*AREX continuously optimizes our products. Webpage content may not reflect the latest updates. For inquiries, please contact [info@arexbio.com](mailto:info@arexbio.com) or your local distributor.

\*Clone Number, Reactivity, Source/Host and Clonality can be found in the product name and Key Features section above.

**DATASHEET****CTPS Rabbit Polyclonal Antibody**

CAT. NO. APA06863

**DATA**

Western blot analysis of CTPS expression in HepG2 (A) whole cell lysates. (Predicted band size: 41; 66 kD; Observed band size: 80 kD)

**STORAGE**

Store at 4°C short term. For long term storage, store at -20°C, avoiding freeze/thaw cycles.

**NOTE**

For Research Use Only. Not for diagnostic, therapeutics, prophylactic or in vivo use.