

DATASHEET

Cytochrome P450 26A1 Rabbit Polyclonal Antibody

CAT. NO. APA06892

KEY FEATURES

Target	Cytochrome P450 26A1	Source / Host	Rabbit
Reactivity	Human, Mouse	Clonality	Polyclonal
Applications	WB, IF/ICC, IP	Conjugation	Unconjugated
Form / Buffer	Liquid in 0.42% Potassium phosphate, 0.87% Sodium chloride, pH 7.3, 30% glycerol, and 0.01% sodium azide.	Storage	at-20°C

BACKGROUND

A cytochrome P450 monooxygenase involved in the metabolism of retinoates (RAs), the active metabolites of vitamin A, and critical signaling molecules in animals, the active metabolites of vitamin A, and critical signaling molecules in animals. RAs exist as at least four different isomers: all-trans-RA (atRA), 9-cis-RA, 13-cis-RA, and 9,13-dicis-RA, where atRA is considered to be the biologically active isomer, although 9-cis-RA and 13-cis-RA also have activity (Probable). Catalyzes the hydroxylation of atRA primarily at C-4 and C-18, thereby contributing to the regulation of atRA homeostasis and signaling. Hydroxylation of atRA limits its biological activity and initiates a degradative process leading to its eventual elimination (Probable).

APPLICATION

To ensure optimal assay performance, AREX recommends conducting reagent titration tailored to each testing system for optimal detection results.

WB	1:500 - 1:1000
IF/ICC	1:100 - 1:500
IP	1:10 - 1:100

*Results are sample-specific. Please refer to your local assay conditions and test parameters for reference.

PRODUCT OVERVIEW

Description	Rabbit polyclonal antibody to Cytochrome P450 26A1
Specificity	Recognizes endogenous levels of Cytochrome P450 26A1 protein.
Antibody Type	Primary antibody
Immunogen	KLH-conjugated synthetic peptide encompassing a sequence within the center region of human Cytochrome P450 26A1. The exact sequence is proprietary.
Purification	The antibody was purified by immunogen affinity chromatography.
Molecular Weight	Predicted: 48; Observed: 55 kD
Form/Buffer	Liquid in 0.42% Potassium phosphate, 0.87% Sodium chloride, pH 7.3, 30% glycerol, and 0.01% sodium azide.
Alternative Names	CYP26; P450RAI1; Cytochrome P450 26A1; Cytochrome P450 retinoic acid-inactivating 1; Cytochrome P450RAI; hP450RAI; Retinoic acid 4-hydroxylase; Retinoic acid-metabolizing cytochrome
Gene Symbol	CYP26A1
Entrez Gene	1592(Human); 13082(Mouse)
SwissProt	O43174(Human); O55127(Mouse)

*AREX continuously optimizes our products. Webpage content may not reflect the latest updates. For inquiries, please contact info@arexbio.com or your local distributor.

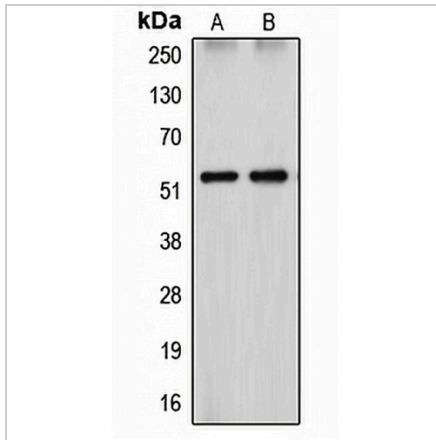
*Clone Number, Reactivity, Source/Host and Clonality can be found in the product name and Key Features section above.

DATASHEET

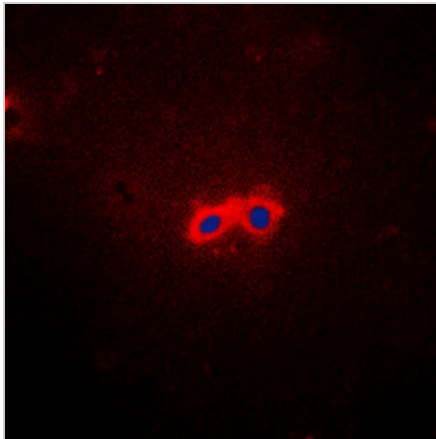
Cytochrome P450 26A1 Rabbit Polyclonal Antibody

CAT. NO. APA06892

DATA



Western blot analysis of Cytochrome P450 26A1 expression in HepG2 (A), HEK293T (B) whole cell lysates. (Predicted band size: 48; 56 kD; Observed band size: 55 kD)



Immunofluorescent analysis of Cytochrome P450 26A1 staining in HepG2 cells. Formalin-fixed cells were permeabilized with 0.1% Triton X-100 in TBS for 5-10 minutes and blocked with 3% BSA-PBS for 30 minutes at room temperature. Cells were probed with the primary antibody in 3% BSA-PBS and incubated overnight at 4 °C in a humidified chamber. Cells were washed with PBST and incubated with a DyLight 594-conjugated secondary antibody (red) in PBS at room temperature in the dark. DAPI was used to stain the cell nuclei (blue).

STORAGE

Store at 4°C short term. For long term storage, store at -20°C, avoiding freeze/thaw cycles.

NOTE

For Research Use Only. Not for diagnostic, therapeutics, prophylactic or in vivo use.