

**DATASHEET**

**Desmoglein 3 Rabbit Polyclonal Antibody**

CAT. NO. APA06917

**KEY FEATURES**

Target	Desmoglein 3	Source / Host	Rabbit
Reactivity	Human, Mouse, Rat	Clonality	Polyclonal
Applications	WB, IF/ICC	Conjugation	Unconjugated
Form / Buffer	Liquid in 0.42% Potassium phosphate, 0.87% Sodium chloride, pH 7.3, 30% glycerol, and 0.01% sodium azide.		Storage at -20°C

**BACKGROUND**

A component of desmosome cell-cell junctions which are required for positive regulation of cellular adhesion . Required for adherens and desmosome junction assembly in response to mechanical force in keratinocytes . Required for desmosome-mediated cell-cell adhesion of cells surrounding the telogen hair club and the basal layer of the outer root sheath epithelium, consequently is essential for the anchoring of telogen hairs in the hair follicle . Required for the maintenance of the epithelial barrier via promoting desmosome-mediated intercellular attachment of suprabasal epithelium to basal cells . May play a role in the protein stability of the desmosome plaque components DSP, JUP, PKP1, PKP2 and PKP3 .

**APPLICATION**

To ensure optimal assay performance, AREX recommends conducting reagent titration tailored to each testing system for optimal detection results.

WB	1:500 - 1:1000
IF/ICC	1:50 - 1:200

\*Results are sample-specific. Please refer to your local assay conditions and test parameters for reference.

**PRODUCT OVERVIEW**

Description	Rabbit polyclonal antibody to Desmoglein 3
Specificity	Recognizes endogenous levels of Desmoglein 3 protein.
Antibody Type	Primary antibody
Immunogen	KLH-conjugated synthetic peptide encompassing a sequence within the center region of human Desmoglein 3. The exact sequence is proprietary.
Purification	The antibody was purified by immunogen affinity chromatography.
Molecular Weight	Predicted: 107 kD; Observed: 150 kD
Form/Buffer	Liquid in 0.42% Potassium phosphate, 0.87% Sodium chloride, pH 7.3, 30% glycerol, and 0.01% sodium azide.
Alternative Names	CDHF6; Desmoglein-3; 130 kDa pemphigus vulgaris antigen; PVA; Cadherin family member 6
Gene Symbol	DSG3
Entrez Gene	1830(Human)
SwissProt	P32926(Human); O35902(Mouse)

\*AREX continuously optimizes our products. Webpage content may not reflect the latest updates. For inquiries, please contact [info@arexbio.com](mailto:info@arexbio.com) or your local distributor.

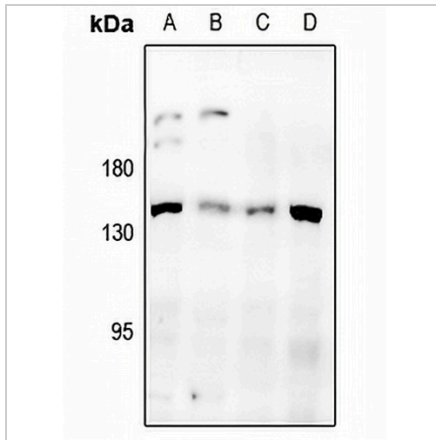
\*Clone Number, Reactivity, Source/Host and Clonality can be found in the product name and Key Features section above.

**DATASHEET**

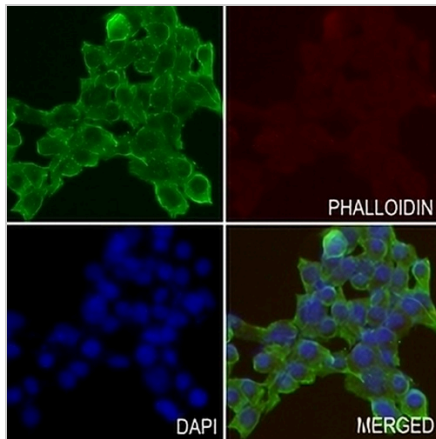
**Desmoglein 3 Rabbit Polyclonal Antibody**

CAT. NO. APA06917

**DATA**



Western blot analysis of Desmoglein 3 expression in CT26 (A), C6 (B), U87MG (C), HCT116 (D) whole cell lysates. (Predicted band size: 107 kD; Observed band size: 150 kD)



Immunofluorescent analysis of Desmoglein 3 staining in LS8 cells. Formalin-fixed cells were permeabilized with 0.1% Triton X-100 in TBS for 5-10 minutes and blocked with 3% BSA-PBS for 30 minutes at room temperature. Cells were probed with the primary antibody in 3% BSA-PBS and incubated overnight at 4 °C in a humidified chamber. Cells were washed with PBST and incubated with a AREX® Fluor 488 -conjugated secondary antibody (green) in PBS at room temperature in the dark. Phalloidin - AREX® Fluor 594 was used to stain Actin filaments (red). DAPI was used to stain the cell nuclei (blue).

**STORAGE**

Store at 4°C short term. For long term storage, store at -20°C, avoiding freeze/thaw cycles.

**NOTE**

For Research Use Only. Not for diagnostic, therapeutics, prophylactic or in vivo use.