

**DATASHEET**

**E2F1 (Phospho-T433) Rabbit Polyclonal Antibody**

CAT. NO. APA06921

**KEY FEATURES**

Target	E2F1 (Phospho-T433)	Source / Host	Rabbit
Reactivity	Human, Mouse, Rat, Monkey	Clonality	Polyclonal
Applications	WB	Conjugation	Unconjugated
Form / Buffer	Liquid in 0.42% Potassium phosphate, 0.87% Sodium chloride, pH 7.3, 30% glycerol, and 0.01% sodium azide.		Storage at -20°C

**BACKGROUND**

Transcription activator that binds DNA cooperatively with DP proteins through the E2 recognition site, 5'-TTTC[CG]CGC-3' found in the promoter region of a number of genes whose products are involved in cell cycle regulation or in DNA replication . The DRTF1/E2F complex functions in the control of cell-cycle progression from G1 to S phase . E2F1 binds preferentially RB1 in a cell-cycle dependent manner . It can mediate both cell proliferation and TP53/p53-dependent apoptosis . Blocks adipocyte differentiation by binding to specific promoters repressing CEBPA binding to its target gene promoters . Directly activates transcription of PEG10 . Positively regulates transcription of RRP1B .

**APPLICATION**

To ensure optimal assay performance, AREX recommends conducting reagent titration tailored to each testing system for optimal detection results.

WB	1:500 - 1:1000
----	----------------

\*Results are sample-specific. Please refer to your local assay conditions and test parameters for reference.

**PRODUCT OVERVIEW**

Description	Rabbit polyclonal antibody to E2F1 (Phospho-T433)
Specificity	Recognizes endogenous levels of E2F1 protein only when phosphorylated at T433.
Antibody Type	Primary antibody
Immunogen	KLH-conjugated synthetic phosphopeptide corresponding to residues surrounding T433 of human E2F1 protein. The exact sequence is proprietary.
Purification	The antibody was purified by immunogen affinity chromatography.
Molecular Weight	Predicted: 46 kD; Observed: 47 kD
Form/Buffer	Liquid in 0.42% Potassium phosphate, 0.87% Sodium chloride, pH 7.3, 30% glycerol, and 0.01% sodium azide.
Alternative Names	RBBP3; Transcription factor E2F1; E2F-1; PBR3; Retinoblastoma-associated protein 1; RBAP-1; Retinoblastoma-binding protein 3; RBBP-3; pRB-binding protein E2F-1
Gene Symbol	E2F1
Entrez Gene	1869(Human); 13555(Mouse)
SwissProt	Q01094(Human); Q61501(Mouse); O09139(Rat)

\*AREX continuously optimizes our products. Webpage content may not reflect the latest updates. For inquiries, please contact [info@arexbio.com](mailto:info@arexbio.com) or your local distributor.

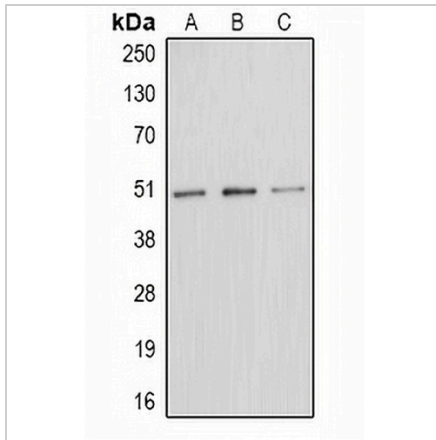
\*Clone Number, Reactivity, Source/Host and Clonality can be found in the product name and Key Features section above.

**DATASHEET**

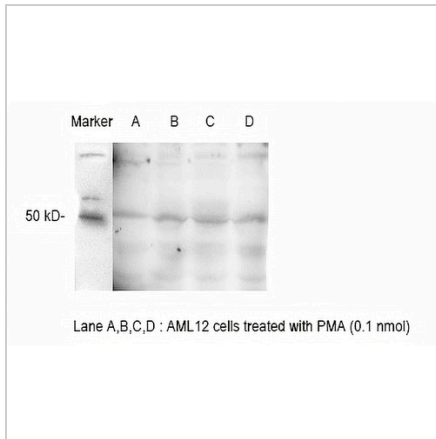
**E2F1 (Phospho-T433) Rabbit Polyclonal Antibody**

CAT. NO. APA06921

**DATA**



Western blot analysis of E2F1 (Phospho-T433) expression in Jurkat colchicine-treated (A), mouse spleen (B), PC12 colchicine-treated (C) whole cell lysates. (Predicted band size: 46 kD; Observed band size: 47 kD)



Western blot analysis of E2F1 (Phospho-T433) expression in AML12-PMA treated (A) (B) (C) (D) whole cell lysates.

**STORAGE**

Store at 4°C short term. For long term storage, store at -20°C, avoiding freeze/thaw cycles.

**NOTE**

For Research Use Only. Not for diagnostic, therapeutics, prophylactic or in vivo use.