

DATASHEET

E2F6 Rabbit Polyclonal Antibody

CAT. NO. APA06924

KEY FEATURES

Target	E2F6	Source / Host	Rabbit
Reactivity	Human, Mouse, Rat, Bovine, Pig	Clonality	Polyclonal
Applications	WB, IHC, IP, ChIP	Conjugation	Unconjugated
Form / Buffer	Liquid in 0.42% Potassium phosphate, 0.87% Sodium chloride, pH 7.3, 30% glycerol, and 0.01% sodium azide.		Storage at -20°C

BACKGROUND

Inhibitor of E2F-dependent transcription . Binds DNA cooperatively with DP proteins through the E2 recognition site, 5'-TTTC[CG]CGC-3' . Has a preference for the 5'-TTTCCCGC-3' E2F recognition site . E2F6 lacks the transcriptional activation and pocket protein binding domains . Appears to regulate a subset of E2F-dependent genes whose products are required for entry into the cell cycle but not for normal cell cycle progression . Represses expression of some meiosis-specific genes, including SLC25A31/ANT4 . May silence expression via the recruitment of a chromatin remodeling complex containing histone H3-K9 methyltransferase activity. Overexpression delays the exit of cells from the S-phase .

APPLICATION

To ensure optimal assay performance, AREX recommends conducting reagent titration tailored to each testing system for optimal detection results.

WB	1:500 - 1:1000
IHC	1:100 - 1:200
IP	1:10 - 1:100
ChIP	1:100 - 1:500

*Results are sample-specific. Please refer to your local assay conditions and test parameters for reference.

PRODUCT OVERVIEW

Description	Rabbit polyclonal antibody to E2F6
Specificity	Recognizes endogenous levels of E2F6 protein.
Antibody Type	Primary antibody
Immunogen	KLH-conjugated synthetic peptide encompassing a sequence within the center region of human E2F6. The exact sequence is proprietary.
Purification	The antibody was purified by immunogen affinity chromatography.
Molecular Weight	Predicted: 31 kD; Observed: 35 kD
Form/Buffer	Liquid in 0.42% Potassium phosphate, 0.87% Sodium chloride, pH 7.3, 30% glycerol, and 0.01% sodium azide.
Alternative Names	Transcription factor E2F6; E2F-6
Gene Symbol	E2F6
Entrez Gene	1876(Human); 50496(Mouse)
SwissProt	O75461(Human); O54917(Mouse)

*AREX continuously optimizes our products. Webpage content may not reflect the latest updates. For inquiries, please contact info@arexbio.com or your local distributor.

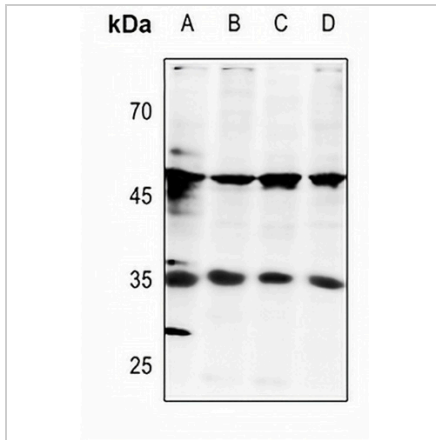
*Clone Number, Reactivity, Source/Host and Clonality can be found in the product name and Key Features section above.

DATASHEET

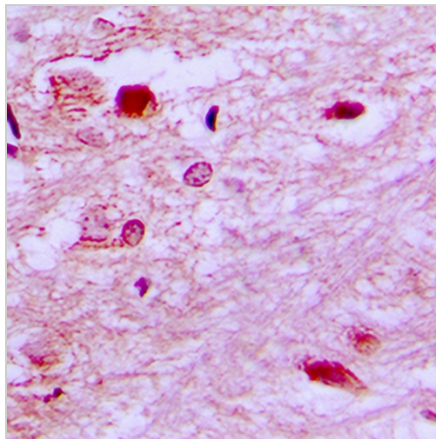
E2F6 Rabbit Polyclonal Antibody

CAT. NO. APA06924

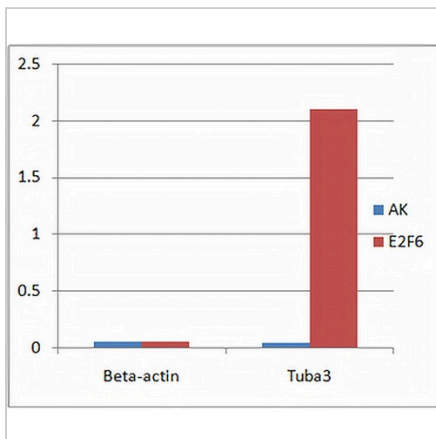
DATA



Western blot analysis of E2F6 expression in PC12 (A), A2780 (B), HEK293T (C), HCT116 (D) whole cell lysates. (Predicted band size: 31 kD; Observed band size: 35 kD)



Immunohistochemical analysis of E2F6 staining in human brain formalin fixed paraffin embedded tissue section. The section was pre-treated using heat mediated antigen retrieval with sodium citrate buffer (pH 6.0). The section was then incubated with the antibody at room temperature and detected using an HRP conjugated compact polymer system. DAB was used as the chromogen. The section was then counterstained with haematoxylin and mounted with DPX.



ChIP analysis of Mouse ES cell nuclear lysate, incubated for 16 hours at 4°C. Cross-linking (X-ChIP) using formaldehyde for 10 minutes. Positive control: Tuba3. Negative Control: Beta-Actin. Detection step: Real-time PCR.

STORAGE

Store at 4°C short term. For long term storage, store at -20°C, avoiding freeze/thaw cycles.

NOTE

For Research Use Only. Not for diagnostic, therapeutics, prophylactic or in vivo use.