

DATASHEET

EPO Receptor (Phospho-Y426) Rabbit Polyclonal Antibody

CAT. NO. APA06952

KEY FEATURES

Target	EPO Receptor (Phospho-Y426)	Source / Host	Rabbit
Reactivity	Human, Mouse, Rat, Dog, Pig, Sheep	Clonality	Polyclonal
Applications	WB	Conjugation	Unconjugated
Form / Buffer	Liquid in 0.42% Potassium phosphate, 0.87% Sodium chloride, pH 7.3, 30% glycerol, and 0.01% sodium azide.	Storage	at-20°C

BACKGROUND

Receptor for erythropoietin, which mediates erythropoietin-induced erythroblast proliferation and differentiation . Upon EPO stimulation, EPOR dimerizes triggering the JAK2/STAT5 signaling cascade . In some cell types, can also activate STAT1 and STAT3 . May also activate the LYN tyrosine kinase .

APPLICATION

To ensure optimal assay performance, AREX recommends conducting reagent titration tailored to each testing system for optimal detection results.

WB	1:500 - 1:1000
----	----------------

*Results are sample-specific. Please refer to your local assay conditions and test parameters for reference.

PRODUCT OVERVIEW

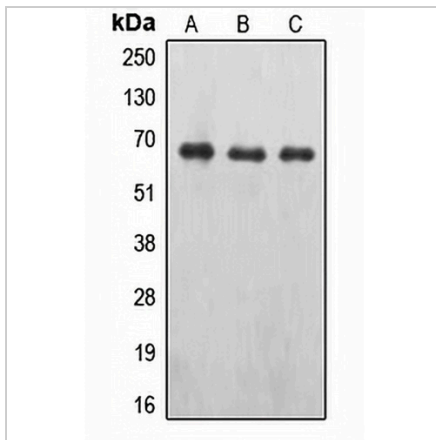
Description	Rabbit polyclonal antibody to EPO Receptor (Phospho-Y426)
Specificity	Recognizes endogenous levels of EPO Receptor protein only when phosphorylated at Y426.
Antibody Type	Primary antibody
Immunogen	KLH-conjugated synthetic phosphopeptide corresponding to residues surrounding Y426 of human EPO Receptor protein. The exact sequence is proprietary.
Purification	The antibody was purified by immunogen affinity chromatography.
Molecular Weight	Predicted: 55 kD; Observed: 60 kD
Form/Buffer	Liquid in 0.42% Potassium phosphate, 0.87% Sodium chloride, pH 7.3, 30% glycerol, and 0.01% sodium azide.
Alternative Names	Erythropoietin receptor; EPO-R
Gene Symbol	EPOR
Entrez Gene	2057(Human); 13857(Mouse)
SwissProt	P19235(Human); P14753(Mouse); Q07303(Rat)

*AREX continuously optimizes our products. Webpage content may not reflect the latest updates. For inquiries, please contact info@arexbio.com or your local distributor.

*Clone Number, Reactivity, Source/Host and Clonality can be found in the product name and Key Features section above.

DATASHEET**EPO Receptor (Phospho-Y426) Rabbit Polyclonal Antibody**

CAT. NO. APA06952

DATA

Western blot analysis of EPO Receptor (Phospho-Y426) expression in A498 (A), MCF7 pervanadate-treated (B), NIH3T3 (C) whole cell lysates. (Predicted band size: 55 kD; Observed band size: 60 kD)

STORAGE

Store at 4°C short term. For long term storage, store at -20°C, avoiding freeze/thaw cycles.

NOTE

For Research Use Only. Not for diagnostic, therapeutics, prophylactic or in vivo use.