

DATASHEET

ERCC4 Rabbit Polyclonal Antibody

CAT. NO. APA06955

KEY FEATURES

| | | | |
|---------------|---|---------------|---------------------|
| Target | ERCC4 | Source / Host | Rabbit |
| Reactivity | Human, Mouse, Rat, Dog, Pig | Clonality | Polyclonal |
| Applications | WB, IP | Conjugation | Unconjugated |
| Form / Buffer | Liquid in 0.42% Potassium phosphate, 0.87% Sodium chloride, pH 7.3, 30% glycerol, and 0.01% sodium azide. | | Storage at -20°C |

BACKGROUND

Catalytic component of a structure-specific DNA repair endonuclease responsible for the 5-prime incision during DNA repair, and which is essential for nucleotide excision repair (NER) and interstrand cross-link (ICL) repair.

APPLICATION

To ensure optimal assay performance, AREX recommends conducting reagent titration tailored to each testing system for optimal detection results.

| | |
|----|----------------|
| WB | 1:500 - 1:1000 |
| IP | 1:10 - 1:100 |

*Results are sample-specific. Please refer to your local assay conditions and test parameters for reference.

PRODUCT OVERVIEW

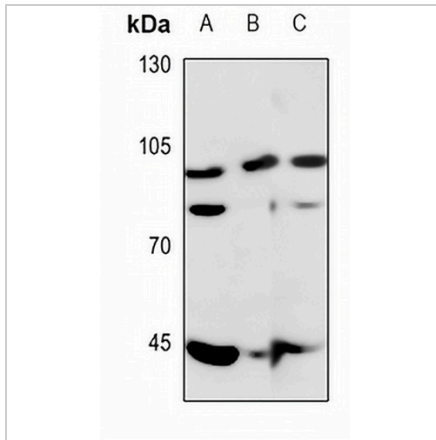
| | |
|-------------------|--|
| Description | Rabbit polyclonal antibody to ERCC4 |
| Specificity | Recognizes endogenous levels of ERCC4 protein. |
| Antibody Type | Primary antibody |
| Immunogen | KLH-conjugated synthetic peptide encompassing a sequence within the C-term region of human ERCC4. The exact sequence is proprietary. |
| Purification | The antibody was purified by immunogen affinity chromatography. |
| Molecular Weight | Predicted: 104 kD; Observed: 104 kD |
| Form/Buffer | Liquid in 0.42% Potassium phosphate, 0.87% Sodium chloride, pH 7.3, 30% glycerol, and 0.01% sodium azide. |
| Alternative Names | ERCC11; XPF; DNA repair endonuclease XPF; DNA excision repair protein ERCC-4; DNA repair protein complementing XP-F cells; Xeroderma pigmentosum group F-complementing protein |
| Gene Symbol | ERCC4 |
| Entrez Gene | 2072(Human); 50505(Mouse) |
| SwissProt | Q92889(Human); Q9QZD4(Mouse) |

*AREX continuously optimizes our products. Webpage content may not reflect the latest updates. For inquiries, please contact info@arexbio.com or your local distributor.

*Clone Number, Reactivity, Source/Host and Clonality can be found in the product name and Key Features section above.

DATASHEET**ERCC4 Rabbit Polyclonal Antibody**

CAT. NO. APA06955

DATA

Western blot analysis of ERCC4 expression in mouse liver (A), mouse testis (B), rat testis (C) whole cell lysates. (Predicted band size: 104 kD; Observed band size: 104 kD)

STORAGE

Store at 4°C short term. For long term storage, store at -20°C, avoiding freeze/thaw cycles.

NOTE

For Research Use Only. Not for diagnostic, therapeutics, prophylactic or in vivo use.