

DATASHEET

CD32b (Phospho-Y292) Rabbit Polyclonal Antibody

CAT. NO. APA06970

KEY FEATURES

Target	CD32b (Phospho-Y292)	Source / Host	Rabbit
Reactivity	Human, Mouse, Rat, Monkey	Clonality	Polyclonal
Applications	WB	Conjugation	Unconjugated
Form / Buffer	Liquid in 0.42% Potassium phosphate, 0.87% Sodium chloride, pH 7.3, 30% glycerol, and 0.01% sodium azide.		Storage at -20°C

BACKGROUND

Receptor for the Fc region of complexed or aggregated immunoglobulins gamma. Low affinity receptor. Involved in a variety of effector and regulatory functions such as phagocytosis of immune complexes and modulation of antibody production by B-cells. Binding to this receptor results in down-modulation of previous state of cell activation triggered via antigen receptors on B-cells (BCR), T-cells (TCR) or via another Fc receptor. Isoform IIB1 fails to mediate endocytosis or phagocytosis. Isoform IIB2 does not trigger phagocytosis.

APPLICATION

To ensure optimal assay performance, AREX recommends conducting reagent titration tailored to each testing system for optimal detection results.

WB	1:500 - 1:1000
----	----------------

*Results are sample-specific. Please refer to your local assay conditions and test parameters for reference.

PRODUCT OVERVIEW

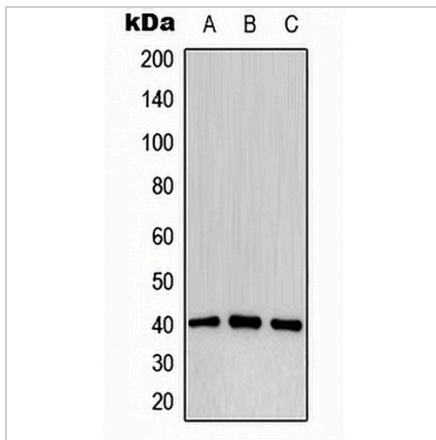
Description	Rabbit polyclonal antibody to CD32b (Phospho-Y292)
Specificity	Recognizes endogenous levels of CD32b protein only when phosphorylated at Y292.
Antibody Type	Primary antibody
Immunogen	KLH-conjugated synthetic phosphopeptide corresponding to residues surrounding Y292 of human CD32b protein. The exact sequence is proprietary.
Purification	The antibody was purified by immunogen affinity chromatography.
Molecular Weight	Predicted: 34 kD; Observed: 40 kD
Form/Buffer	Liquid in 0.42% Potassium phosphate, 0.87% Sodium chloride, pH 7.3, 30% glycerol, and 0.01% sodium azide.
Alternative Names	CD32; FCG2; IGFR2; Low affinity immunoglobulin gamma Fc region receptor II-b; IgG Fc receptor II-b; CDW32; Fc-gamma RII-b; Fc-gamma-RIIb; FcRII-b; CD32; FCGR3A; CD16A; FCG3; FCGR3; IGFR3; Low affinity immunoglobulin gamma Fc region receptor III-A; CD16a antigen; Fc-gamma RIII-alpha; Fc-gamma RIII; Fc-gamma RIIIa; FcRIII; FcRIIIa; FcR-10; IgG Fc receptor III-2; CD16a; FCGR3B; CD16B; FCG3; FCGR3; IGFR3; Low affinity immunoglobulin gamma Fc region receptor III-B; Fc-gamma RIII-beta; Fc-gamma RIII; Fc-gamma RIIIb; FcRIII; FcRIIIb; FcR-10; IgG Fc receptor III-1; CD16b
Gene Symbol	FCGR2B
Entrez Gene	2213(Human)
SwissProt	P31994(Human)

*AREX continuously optimizes our products. Webpage content may not reflect the latest updates. For inquiries, please contact info@arexbio.com or your local distributor.

*Clone Number, Reactivity, Source/Host and Clonality can be found in the product name and Key Features section above.

DATASHEET**CD32b (Phospho-Y292) Rabbit Polyclonal Antibody**

CAT. NO. APA06970

DATA

Western blot analysis of CD32b (Phospho-Y292) expression in MCF7 pervanadate-treated (A), mouse liver (B), PC12 pervanadate-treated (C) whole cell lysates. (Predicted band size: 34 kD; Observed band size: 40 kD)

STORAGE

Store at 4°C short term. For long term storage, store at -20°C, avoiding freeze/thaw cycles.

NOTE

For Research Use Only. Not for diagnostic, therapeutics, prophylactic or in vivo use.