

DATASHEET

FOXM1 Rabbit Polyclonal Antibody

CAT. NO. APA06982

KEY FEATURES

Target	FOXM1	Source / Host	Rabbit
Reactivity	Human, Mouse, Rat	Clonality	Polyclonal
Applications	WB	Conjugation	Unconjugated
Form / Buffer	Liquid in 0.42% Potassium phosphate, 0.87% Sodium chloride, pH 7.3, 30% glycerol, and 0.01% sodium azide.		Storage at-20°C

BACKGROUND

Transcription factor regulating the expression of cell cycle genes essential for DNA replication and mitosis . Plays a role in the control of cell proliferation . Also plays a role in DNA break repair, participating in the DNA damage checkpoint response . Promotes transcription of PHB2 .

APPLICATION

To ensure optimal assay performance, AREX recommends conducting reagent titration tailored to each testing system for optimal detection results.

WB	1:500 - 1:1000
----	----------------

*Results are sample-specific. Please refer to your local assay conditions and test parameters for reference.

PRODUCT OVERVIEW

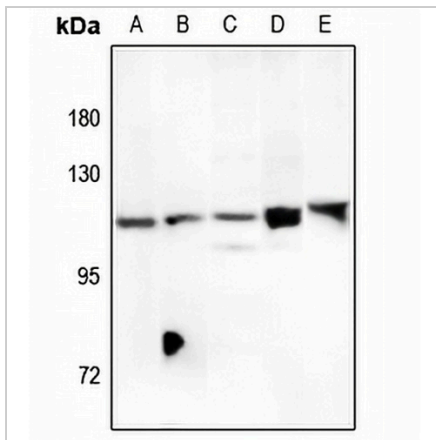
Description	Rabbit polyclonal antibody to FOXM1
Specificity	Recognizes endogenous levels of FOXM1 protein.
Antibody Type	Primary antibody
Immunogen	KLH-conjugated synthetic peptide encompassing a sequence within the center region of human FOXM1. The exact sequence is proprietary.
Purification	The antibody was purified by immunogen affinity chromatography.
Molecular Weight	Predicted: 84 kD; Observed: 110; 84 kD
Form/Buffer	Liquid in 0.42% Potassium phosphate, 0.87% Sodium chloride, pH 7.3, 30% glycerol, and 0.01% sodium azide.
Alternative Names	FKHL16; HFH11; MPP2; WIN; Forkhead box protein M1; Forkhead-related protein FKHL16; Hepatocyte nuclear factor 3 forkhead homolog 11; HFH-11; HNF-3/fork-head homolog 11; M-phase phosphoprotein 2; MPM-2 reactive phosphoprotein 2; Transcription factor Trident; Winged-helix factor from INS-1 cells
Gene Symbol	FOXM1
Entrez Gene	2305(Human)
SwissProt	Q08050(Human); O08696(Mouse); P97691(Rat)

*AREX continuously optimizes our products. Webpage content may not reflect the latest updates. For inquiries, please contact info@arexbio.com or your local distributor.

*Clone Number, Reactivity, Source/Host and Clonality can be found in the product name and Key Features section above.

DATASHEET**FOXM1 Rabbit Polyclonal Antibody**

CAT. NO. APA06982

DATA

Western blot analysis of FOXM1 expression in mouse testis (A), rat ovary (B), HCT116 (C), H1792 (D), MCF7 (E) whole cell lysates. (Predicted band size: 84 kD; Observed band size: 110; 84 kD)

STORAGE

Store at 4°C short term. For long term storage, store at -20°C, avoiding freeze/thaw cycles.

NOTE

For Research Use Only. Not for diagnostic, therapeutics, prophylactic or in vivo use.