

**DATASHEET**

**GABBR1 Rabbit Polyclonal Antibody**

CAT. NO. APA07005

**KEY FEATURES**

Target	GABBR1	Source / Host	Rabbit
Reactivity	Human, Mouse, Rat, Bovine, Pig	Clonality	Polyclonal
Applications	WB, IHC	Conjugation	Unconjugated
Form / Buffer	Liquid in 0.42% Potassium phosphate, 0.87% Sodium chloride, pH 7.3, 30% glycerol, and 0.01% sodium azide.		Storage at -20°C

**BACKGROUND**

Component of a heterodimeric G-protein coupled receptor for GABA, formed by GABBR1 and GABBR2 . Within the heterodimeric GABA receptor, only GABBR1 seems to bind agonists, while GABBR2 mediates coupling to G proteins . Ligand binding causes a conformation change that triggers signaling via guanine nucleotide-binding proteins (G proteins) and modulates the activity of down-stream effectors, such as adenylate cyclase . Signaling inhibits adenylate cyclase, stimulates phospholipase A2, activates potassium channels, inactivates voltage-dependent calcium-channels and modulates inositol phospholipid hydrolysis . Calcium is required for high affinity binding to GABA . Plays a critical role in the fine-tuning of inhibitory synaptic transmission .

**APPLICATION**

To ensure optimal assay performance, AREX recommends conducting reagent titration tailored to each testing system for optimal detection results.

WB	1:500 - 1:1000
IHC	1:50 - 1:100

\*Results are sample-specific. Please refer to your local assay conditions and test parameters for reference.

**PRODUCT OVERVIEW**

Description	Rabbit polyclonal antibody to GABBR1
Specificity	Recognizes endogenous levels of GABBR1 protein.
Antibody Type	Primary antibody
Immunogen	KLH-conjugated synthetic peptide encompassing a sequence within the C-term region of human GABBR1. The exact sequence is proprietary.
Purification	The antibody was purified by immunogen affinity chromatography.
Molecular Weight	Predicted: 108 kD; Observed: 110; 130 kD
Form/Buffer	Liquid in 0.42% Potassium phosphate, 0.87% Sodium chloride, pH 7.3, 30% glycerol, and 0.01% sodium azide.
Alternative Names	GPRC3A; Gamma-aminobutyric acid type B receptor subunit 1; GABA-B receptor 1; GABA-B-R1; GABA-BR1; GABABR1; Gb1
Gene Symbol	GABBR1
Entrez Gene	2550(Human); 54393(Mouse); 81657(Rat)
SwissProt	Q9UBS5(Human); Q9WV18(Mouse); Q9Z0U4(Rat)

\*AREX continuously optimizes our products. Webpage content may not reflect the latest updates. For inquiries, please contact [info@arexbio.com](mailto:info@arexbio.com) or your local distributor.

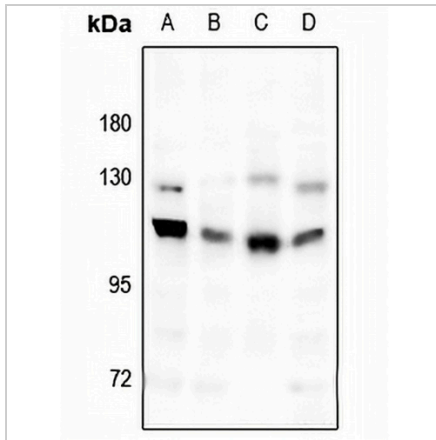
\*Clone Number, Reactivity, Source/Host and Clonality can be found in the product name and Key Features section above.

**DATASHEET**

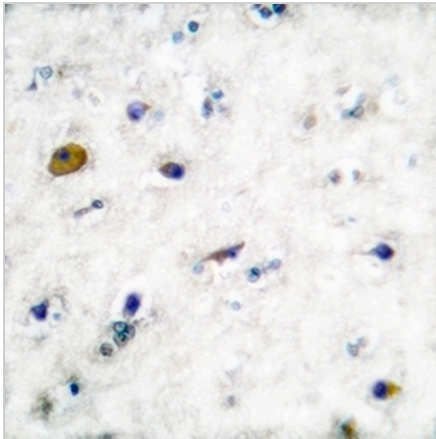
**GABBR1 Rabbit Polyclonal Antibody**

CAT. NO. APA07005

**DATA**



Western blot analysis of GABBR1 expression in HCT116 (A), PC3 (B), CT26 (C), H1792 (D) whole cell lysates. (Predicted band size: 108 kD; Observed band size: 110; 130 kD)



Immunohistochemical analysis of GABBR1 staining in human brain formalin fixed paraffin embedded tissue section. The section was pre-treated using heat mediated antigen retrieval with sodium citrate buffer (pH 6.0). The section was then incubated with the antibody at room temperature and detected using an HRP conjugated compact polymer system. DAB was used as the chromogen. The section was then counterstained with haematoxylin and mounted with DPX.

**STORAGE**

Store at 4°C short term. For long term storage, store at -20°C, avoiding freeze/thaw cycles.

**NOTE**

For Research Use Only. Not for diagnostic, therapeutics, prophylactic or in vivo use.