

DATASHEET

Glycerol Kinase 1 Rabbit Polyclonal Antibody

CAT. NO. APA07024

KEY FEATURES

Target	Glycerol Kinase 1	Source / Host	Rabbit
Reactivity	Human, Mouse, Rat, Bovine, Dog, Pig	Clonality	Polyclonal
Applications	WB, IHC, IF/ICC	Conjugation	Unconjugated
Form / Buffer	Liquid in 0.42% Potassium phosphate, 0.87% Sodium chloride, pH 7.3, 30% glycerol, and 0.01% sodium azide.	Storage	at-20°C

BACKGROUND

Kinase that plays a key role in glycerol metabolism, catalyzing its phosphorylation to produce sn-glycerol 3-phosphate. Sn-glycerol 3-phosphate is a crucial intermediate in various metabolic pathways, such as the synthesis of glycerolipids and triglycerides, glycogenesis, glycolysis and gluconeogenesis.

APPLICATION

To ensure optimal assay performance, AREX recommends conducting reagent titration tailored to each testing system for optimal detection results.

WB	1:500 - 1:1000
IHC	1:50 - 1:100
IF/ICC	1:50 - 1:200

*Results are sample-specific. Please refer to your local assay conditions and test parameters for reference.

PRODUCT OVERVIEW

Description	Rabbit polyclonal antibody to Glycerol Kinase 1
Specificity	Recognizes endogenous levels of Glycerol Kinase 1 protein.
Antibody Type	Primary antibody
Immunogen	KLH-conjugated synthetic peptide encompassing a sequence within the C-term region of human Glycerol Kinase 1. The exact sequence is proprietary.
Purification	The antibody was purified by immunogen affinity chromatography.
Molecular Weight	Predicted: 61 kD; Observed: 57 kD
Form/Buffer	Liquid in 0.42% Potassium phosphate, 0.87% Sodium chloride, pH 7.3, 30% glycerol, and 0.01% sodium azide.
Alternative Names	Glycerol kinase; GK; Glycerokinase; ATP:glycerol 3-phosphotransferase
Gene Symbol	GK
Entrez Gene	2710(Human); 14933(Mouse); 79223(Rat)
SwissProt	P32189(Human); Q64516(Mouse); Q63060(Rat)

*AREX continuously optimizes our products. Webpage content may not reflect the latest updates. For inquiries, please contact info@arexbio.com or your local distributor.

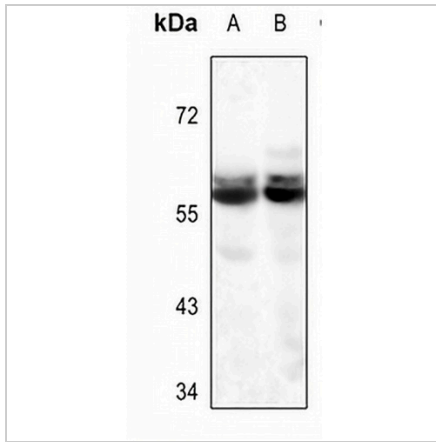
*Clone Number, Reactivity, Source/Host and Clonality can be found in the product name and Key Features section above.

DATASHEET

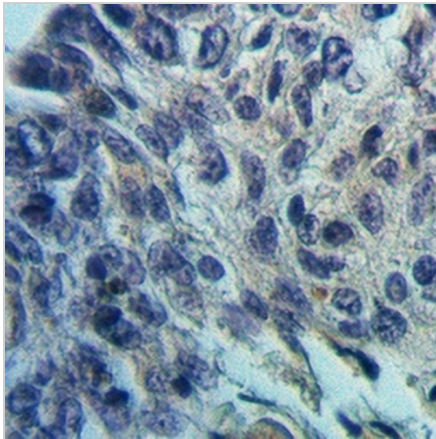
Glycerol Kinase 1 Rabbit Polyclonal Antibody

CAT. NO. APA07024

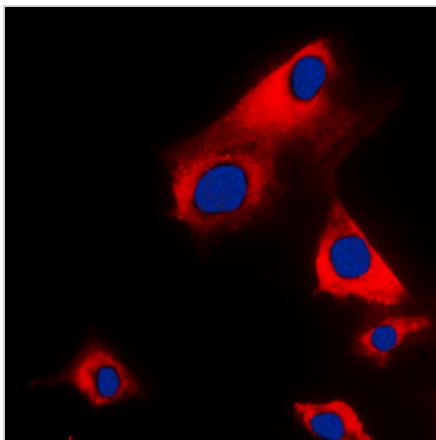
DATA



Western blot analysis of Glycerol Kinase 1 expression in mouse liver (A), rat liver (B) whole cell lysates. (Predicted band size: 61 kD; Observed band size: 57 kD)



Immunohistochemical analysis of Glycerol Kinase 1 staining in human lung cancer formalin fixed paraffin embedded tissue section. The section was pre-treated using heat mediated antigen retrieval with sodium citrate buffer (pH 6.0). The section was then incubated with the antibody at room temperature and detected using an HRP conjugated compact polymer system. DAB was used as the chromogen. The section was then counterstained with haematoxylin and mounted with DPX.



Immunofluorescent analysis of Glycerol Kinase 1 staining in H9C2 cells. Formalin-fixed cells were permeabilized with 0.1% Triton X-100 in TBS for 5-10 minutes and blocked with 3% BSA-PBS for 30 minutes at room temperature. Cells were probed with the primary antibody in 3% BSA-PBS and incubated overnight at 4 °C in a humidified chamber. Cells were washed with PBST and incubated with a DyLight 594-conjugated secondary antibody (red) in PBS at room temperature in the dark. DAPI was used to stain the cell nuclei (blue).

STORAGE

Store at 4°C short term. For long term storage, store at -20°C, avoiding freeze/thaw cycles.

NOTE

For Research Use Only. Not for diagnostic, therapeutics, prophylactic or in vivo use.