

**DATASHEET**

**GLRB Rabbit Polyclonal Antibody**

CAT. NO. APA07027

**KEY FEATURES**

Target	GLRB	Source / Host	Rabbit
Reactivity	Human, Mouse, Rat, Bovine, Pig	Clonality	Polyclonal
Applications	WB	Conjugation	Unconjugated
Form / Buffer	Liquid in 0.42% Potassium phosphate, 0.87% Sodium chloride, pH 7.3, 30% glycerol, and 0.01% sodium azide.		Storage at -20°C

**BACKGROUND**

Subunit of heteromeric glycine-gated chloride channels . Plays an important role in the down-regulation of neuronal excitability . Contributes to the generation of inhibitory postsynaptic currents .

**APPLICATION**

To ensure optimal assay performance, AREX recommends conducting reagent titration tailored to each testing system for optimal detection results.

WB	1:500 - 1:1000
----	----------------

\*Results are sample-specific. Please refer to your local assay conditions and test parameters for reference.

**PRODUCT OVERVIEW**

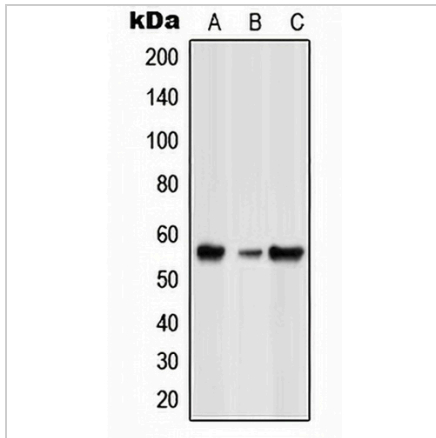
Description	Rabbit polyclonal antibody to GLRB
Specificity	Recognizes endogenous levels of GLRB protein.
Antibody Type	Primary antibody
Immunogen	KLH-conjugated synthetic peptide encompassing a sequence within the center region of human GLRB. The exact sequence is proprietary.
Purification	The antibody was purified by immunogen affinity chromatography.
Molecular Weight	Predicted: 34; Observed: 58 kD
Form/Buffer	Liquid in 0.42% Potassium phosphate, 0.87% Sodium chloride, pH 7.3, 30% glycerol, and 0.01% sodium azide.
Alternative Names	Glycine receptor subunit beta; Glycine receptor 58 kDa subunit
Gene Symbol	GLRB
Entrez Gene	2743(Human); 14658(Mouse); 25456(Rat)
SwissProt	P48167(Human); P48168(Mouse); P20781(Rat)

\*AREX continuously optimizes our products. Webpage content may not reflect the latest updates. For inquiries, please contact [info@arexbio.com](mailto:info@arexbio.com) or your local distributor.

\*Clone Number, Reactivity, Source/Host and Clonality can be found in the product name and Key Features section above.

**DATASHEET****GLRB Rabbit Polyclonal Antibody**

CAT. NO. APA07027

**DATA**

Western blot analysis of GLRB expression in HeLa (A), NIH3T3 (B), rat spleen (C) whole cell lysates. (Predicted band size: 34; 56 kD; Observed band size: 58 kD)

**STORAGE**

Store at 4°C short term. For long term storage, store at -20°C, avoiding freeze/thaw cycles.

**NOTE**

For Research Use Only. Not for diagnostic, therapeutics, prophylactic or in vivo use.