

**DATASHEET**

**GPR18 Rabbit Polyclonal Antibody**

CAT. NO. APA07038

**KEY FEATURES**

Target	GPR18	Source / Host	Rabbit
Reactivity	Human, Mouse, Rat	Clonality	Polyclonal
Applications	WB, IF/ICC, FC	Conjugation	Unconjugated
Form / Buffer	Liquid in 0.42% Potassium phosphate, 0.87% Sodium chloride, pH 7.3, 30% glycerol, and 0.01% sodium azide.		Storage at-20°C

**BACKGROUND**

G protein-coupled receptor (GPCR) that plays a role in diverse physiological processes particularly within the immune and nervous systems that plays a role in diverse physiological processes particularly within the immune and nervous systems . Becomes active when triggered by various endogenous ligands including endocannabinoid N-arachidonyl glycine (NAGly), delta-9-tetrahydrocannabinol or resolvin D2/RvD2 derived from the omega-3 fatty acid docosahexaenoic acid (DHA) . Upon RvD2 binding, facilitates the resolution of inflammation, aiding in tissue repair and homeostasis. Mechanistically, RvD2 ligation initiates Gαphs protein coupling, activation of cAMP-PKA signaling pathway and phosphorylation of STAT3, leading to RvD2-stimulated macrophage phagocytosis .

**APPLICATION**

To ensure optimal assay performance, AREX recommends conducting reagent titration tailored to each testing system for optimal detection results.

WB	1:500 - 1:1000
IF/ICC	1:100 - 1:500
FC	1:100 - 1:400

\*Results are sample-specific. Please refer to your local assay conditions and test parameters for reference.

**PRODUCT OVERVIEW**

Description	Rabbit polyclonal antibody to GPR18
Specificity	Recognizes endogenous levels of GPR18 protein.
Antibody Type	Primary antibody
Immunogen	KLH-conjugated synthetic peptide encompassing a sequence within the center region of human GPR18. The exact sequence is proprietary.
Purification	The antibody was purified by immunogen affinity chromatography.
Molecular Weight	Predicted: 38 kD; Observed: 38 kD
Form/Buffer	Liquid in 0.42% Potassium phosphate, 0.87% Sodium chloride, pH 7.3, 30% glycerol, and 0.01% sodium azide.
Alternative Names	GPCRW; N-arachidonyl glycine receptor; NAGly receptor; G-protein coupled receptor 18
Gene Symbol	GPR18
Entrez Gene	2841(Human); 110168(Mouse); 679957(Rat)
SwissProt	Q14330(Human); Q8K1Z6(Mouse); A1A5S3(Rat)

\*AREX continuously optimizes our products. Webpage content may not reflect the latest updates. For inquiries, please contact [info@arexbio.com](mailto:info@arexbio.com) or your local distributor.

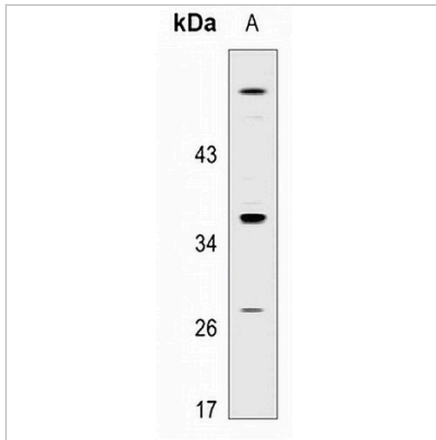
\*Clone Number, Reactivity, Source/Host and Clonality can be found in the product name and Key Features section above.

**DATASHEET**

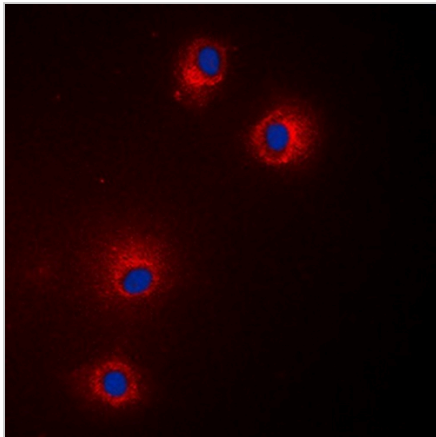
**GPR18 Rabbit Polyclonal Antibody**

CAT. NO. APA07038

**DATA**



Western blot analysis of GPR18 expression in Jurkat (A) whole cell lysates. (Predicted band size: 38 kD; Observed band size: 38 kD)



Immunofluorescent analysis of GPR18 staining in Jurkat cells. Formalin-fixed cells were permeabilized with 0.1% Triton X-100 in TBS for 5-10 minutes and blocked with 3% BSA-PBS for 30 minutes at room temperature. Cells were probed with the primary antibody in 3% BSA-PBS and incubated overnight at 4 °C in a humidified chamber. Cells were washed with PBST and incubated with a DyLight 594-conjugated secondary antibody (red) in PBS at room temperature in the dark. DAPI was used to stain the cell nuclei (blue).

**STORAGE**

Store at 4°C short term. For long term storage, store at -20°C, avoiding freeze/thaw cycles.

**NOTE**

For Research Use Only. Not for diagnostic, therapeutics, prophylactic or in vivo use.