

**DATASHEET**

**GPR25 Rabbit Polyclonal Antibody**

CAT. NO. APA07041

**KEY FEATURES**

Target	GPR25	Source / Host	Rabbit
Reactivity	Human, Mouse, Rat	Clonality	Polyclonal
Applications	WB	Conjugation	Unconjugated
Form / Buffer	Liquid in 0.42% Potassium phosphate, 0.87% Sodium chloride, pH 7.3, 30% glycerol, and 0.01% sodium azide.		Storage at -20°C

**BACKGROUND**

Receptor for the C-X-C chemokine CXCL17, which plays a key role in lymphocyte homing . Ligand binding causes a conformation change that triggers signaling via guanine nucleotide-binding proteins (G proteins) and modulates the activity of downstream effectors, such as RhoA pathway . Activation by CXCL17 on lymphocytes activates the RhoA pathway, which regulates cytoskeletal dynamics and integrins, mediating lymphocyte recruitment into the respiratory, upper gastrointestinal, biliary and genito-urinary tracts .

**APPLICATION**

To ensure optimal assay performance, AREX recommends conducting reagent titration tailored to each testing system for optimal detection results.

WB	1:500 - 1:1000
----	----------------

\*Results are sample-specific. Please refer to your local assay conditions and test parameters for reference.

**PRODUCT OVERVIEW**

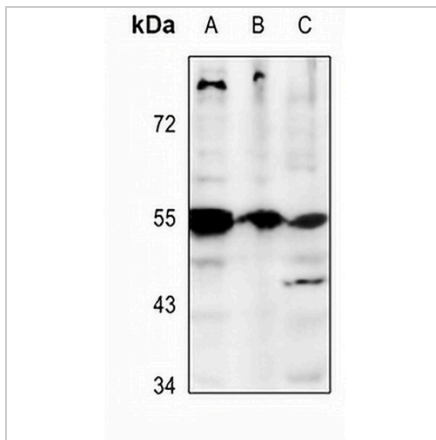
Description	Rabbit polyclonal antibody to GPR25
Specificity	Recognizes endogenous levels of GPR25 protein.
Antibody Type	Primary antibody
Immunogen	KLH-conjugated synthetic peptide encompassing a sequence within the center region of human GPR25. The exact sequence is proprietary.
Purification	The antibody was purified by immunogen affinity chromatography.
Molecular Weight	Predicted: 38 kD; Observed: 55 kD
Form/Buffer	Liquid in 0.42% Potassium phosphate, 0.87% Sodium chloride, pH 7.3, 30% glycerol, and 0.01% sodium azide.
Alternative Names	Probable G-protein coupled receptor 25
Gene Symbol	GPR25
Entrez Gene	2848(Human); 383563(Mouse)
SwissProt	O00155(Human); P0C5I1(Mouse)

\*AREX continuously optimizes our products. Webpage content may not reflect the latest updates. For inquiries, please contact [info@arexbio.com](mailto:info@arexbio.com) or your local distributor.

\*Clone Number, Reactivity, Source/Host and Clonality can be found in the product name and Key Features section above.

**DATASHEET****GPR25 Rabbit Polyclonal Antibody**

CAT. NO. APA07041

**DATA**

Western blot analysis of GPR25 expression in A549 (A), LO2 (B), CT26 (C) whole cell lysates. (Predicted band size: 38 kD; Observed band size: 55 kD)

**STORAGE**

Store at 4°C short term. For long term storage, store at -20°C, avoiding freeze/thaw cycles.

**NOTE**

For Research Use Only. Not for diagnostic, therapeutics, prophylactic or in vivo use.