

DATASHEET

GPR34 Rabbit Polyclonal Antibody

CAT. NO. APA07042

KEY FEATURES

Target	GPR34	Source / Host	Rabbit
Reactivity	Human, Mouse, Rat, Monkey, Pig	Clonality	Polyclonal
Applications	WB	Conjugation	Unconjugated
Form / Buffer	Liquid in 0.42% Potassium phosphate, 0.87% Sodium chloride, pH 7.3, 30% glycerol, and 0.01% sodium azide.		Storage at-20°C

BACKGROUND

G-protein-coupled receptor of lysophosphatidylserine (LysoPS) that plays different roles in immune response that plays different roles in immune response . Acts a damage-sensing receptor that triggers tissue repair upon recognition of dying neutrophils . Mechanistically, apoptotic neutrophils release lysophosphatidylserine that are recognized by type 3 innate lymphoid cells (ILC3s) via GPR34, which activates downstream PI3K-AKT and RAS-ERK signaling pathways leading to STAT3 activation and IL-22 production . Plays an important role in microglial function, controlling morphology and phagocytosis .

APPLICATION

To ensure optimal assay performance, AREX recommends conducting reagent titration tailored to each testing system for optimal detection results.

WB	1:500 - 1:1000
----	----------------

*Results are sample-specific. Please refer to your local assay conditions and test parameters for reference.

PRODUCT OVERVIEW

Description	Rabbit polyclonal antibody to GPR34
Specificity	Recognizes endogenous levels of GPR34 protein.
Antibody Type	Primary antibody
Immunogen	KLH-conjugated synthetic peptide encompassing a sequence within the center region of human GPR34. The exact sequence is proprietary.
Purification	The antibody was purified by immunogen affinity chromatography.
Molecular Weight	Predicted: 43 kD; Observed: 44 kD
Form/Buffer	Liquid in 0.42% Potassium phosphate, 0.87% Sodium chloride, pH 7.3, 30% glycerol, and 0.01% sodium azide.
Alternative Names	Probable G-protein coupled receptor 34
Gene Symbol	GPR34
Entrez Gene	2857(Human)
SwissProt	Q9UPC5(Human)

*AREX continuously optimizes our products. Webpage content may not reflect the latest updates. For inquiries, please contact info@arexbio.com or your local distributor.

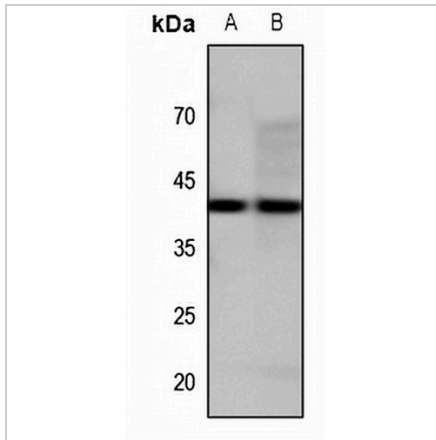
*Clone Number, Reactivity, Source/Host and Clonality can be found in the product name and Key Features section above.

DATASHEET

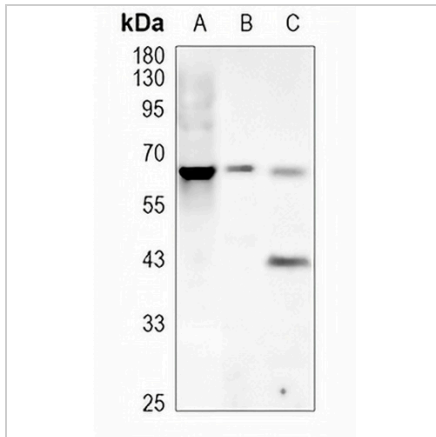
GPR34 Rabbit Polyclonal Antibody

CAT. NO. APA07042

DATA



Western blot analysis of GPR34 expression in mouse brain (A), mouse kidney (B) whole cell lysates. (Predicted band size: 43 kD; Observed band size: 44 kD)



Western blot analysis of GPR34 expression in U87 (A), mouse liver (B), mouse muscle (C) whole cell lysates. (Predicted band size: 43 kD; Observed band size: 44, 65 kD)

STORAGE

Store at 4°C short term. For long term storage, store at -20°C, avoiding freeze/thaw cycles.

NOTE

For Research Use Only. Not for diagnostic, therapeutics, prophylactic or in vivo use.