

DATASHEET

mGLUR8 Rabbit Polyclonal Antibody

CAT. NO. APA07057

KEY FEATURES

Target	mGLUR8	Source / Host	Rabbit
Reactivity	Human, Mouse, Rat, Monkey, Pig, Rabbit	Clonality	Polyclonal
Applications	WB, IHC	Conjugation	Unconjugated
Form / Buffer	Liquid in 0.42% Potassium phosphate, 0.87% Sodium chloride, pH 7.3, 30% glycerol, and 0.01% sodium azide.		Storage at-20°C

BACKGROUND

G-protein coupled receptor for glutamate. Ligand binding causes a conformation change that triggers signaling via guanine nucleotide-binding proteins (G proteins) and modulates the activity of down-stream effectors, such as adenylate cyclase. Signaling inhibits adenylate cyclase activity.

APPLICATION

To ensure optimal assay performance, AREX recommends conducting reagent titration tailored to each testing system for optimal detection results.

WB	1:500 - 1:1000
IHC	1:50 - 1:100

*Results are sample-specific. Please refer to your local assay conditions and test parameters for reference.

PRODUCT OVERVIEW

Description	Rabbit polyclonal antibody to mGLUR8
Specificity	Recognizes endogenous levels of mGLUR8 protein.
Antibody Type	Primary antibody
Immunogen	KLH-conjugated synthetic peptide encompassing a sequence within the C-term region of human mGLUR8. The exact sequence is proprietary.
Purification	The antibody was purified by immunogen affinity chromatography.
Molecular Weight	Predicted: 101 kD; Observed: 102 kD
Form/Buffer	Liquid in 0.42% Potassium phosphate, 0.87% Sodium chloride, pH 7.3, 30% glycerol, and 0.01% sodium azide.
Alternative Names	GPRC1H; MGLUR8; Metabotropic glutamate receptor 8; mGluR8
Gene Symbol	GRM8
Entrez Gene	2918(Human); 14823(Mouse); 60590(Rat)
SwissProt	O00222(Human); P47743(Mouse); P70579(Rat)

*AREX continuously optimizes our products. Webpage content may not reflect the latest updates. For inquiries, please contact info@arexbio.com or your local distributor.

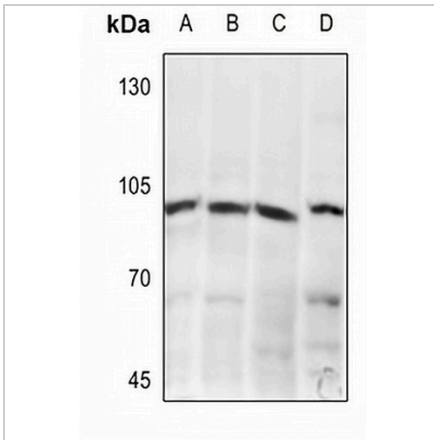
*Clone Number, Reactivity, Source/Host and Clonality can be found in the product name and Key Features section above.

DATASHEET

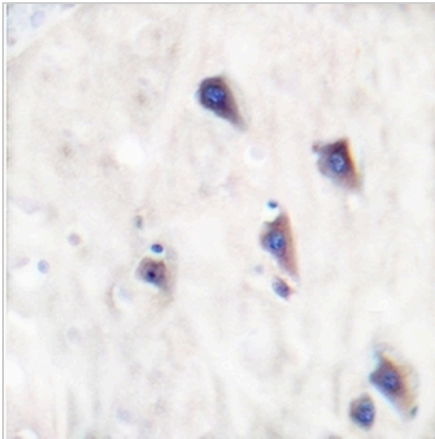
mGLUR8 Rabbit Polyclonal Antibody

CAT. NO. APA07057

DATA



Western blot analysis of mGLUR8 expression in HCT116 (A), HepG2 (B), HeLa (C), AML12 (D) whole cell lysates. (Predicted band size: 101 kD; Observed band size: 102 kD)



Immunohistochemical analysis of mGLUR8 staining in human brain formalin fixed paraffin embedded tissue section. The section was pre-treated using heat mediated antigen retrieval with sodium citrate buffer (pH 6.0). The section was then incubated with the antibody at room temperature and detected using an HRP conjugated compact polymer system. DAB was used as the chromogen. The section was then counterstained with haematoxylin and mounted with DPX.

STORAGE

Store at 4°C short term. For long term storage, store at -20°C, avoiding freeze/thaw cycles.

NOTE

For Research Use Only. Not for diagnostic, therapeutics, prophylactic or in vivo use.