

DATASHEET

HSC70 Rabbit Polyclonal Antibody

CAT. NO. APA07101

KEY FEATURES

| | | | |
|---------------|---|---------------|---------------------|
| Target | HSC70 | Source / Host | Rabbit |
| Reactivity | Human, Mouse, Rat, Bovine, Chicken | Clonality | Polyclonal |
| Applications | WB, IF/ICC | Conjugation | Unconjugated |
| Form / Buffer | Liquid in 0.42% Potassium phosphate, 0.87% Sodium chloride, pH 7.3, 30% glycerol, and 0.01% sodium azide. | | Storage at -20°C |

BACKGROUND

Molecular chaperone implicated in a wide variety of cellular processes, including protection of the proteome from stress, folding and transport of newly synthesized polypeptides, chaperone-mediated autophagy, activation of proteolysis of misfolded proteins, formation and dissociation of protein complexes, and antigen presentation. Plays a pivotal role in the protein quality control system, ensuring the correct folding of proteins, the re-folding of misfolded proteins and controlling the targeting of proteins for subsequent degradation. This is achieved through cycles of ATP binding, ATP hydrolysis and ADP release, mediated by co-chaperones.

APPLICATION

To ensure optimal assay performance, AREX recommends conducting reagent titration tailored to each testing system for optimal detection results.

| | |
|--------|----------------|
| WB | 1:500 - 1:1000 |
| IF/ICC | 1:50 - 1:200 |

*Results are sample-specific. Please refer to your local assay conditions and test parameters for reference.

PRODUCT OVERVIEW

| | |
|-------------------|--|
| Description | Rabbit polyclonal antibody to HSC70 |
| Specificity | Recognizes endogenous levels of HSC70 protein. |
| Antibody Type | Primary antibody |
| Immunogen | KLH-conjugated synthetic peptide encompassing a sequence within the center region of human HSC70. The exact sequence is proprietary. |
| Purification | The antibody was purified by immunogen affinity chromatography. |
| Molecular Weight | Predicted: 70 kD; Observed: 70 kD |
| Form/Buffer | Liquid in 0.42% Potassium phosphate, 0.87% Sodium chloride, pH 7.3, 30% glycerol, and 0.01% sodium azide. |
| Alternative Names | HSC70; HSP73; HSPA10; Heat shock cognate 71 kDa protein; Heat shock 70 kDa protein 8; Lipopolysaccharide-associated protein 1; LAP-1; LPS-associated protein 1 |
| Gene Symbol | HSPA8 |
| Entrez Gene | 3312(Human); 15481(Mouse); 24468(Rat) |
| SwissProt | P11142(Human); P63017(Mouse); P63018(Rat) |

*AREX continuously optimizes our products. Webpage content may not reflect the latest updates. For inquiries, please contact info@arexbio.com or your local distributor.

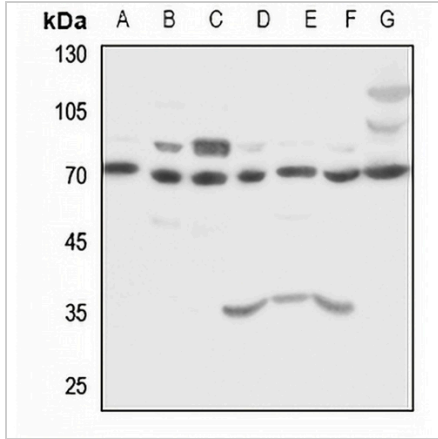
*Clone Number, Reactivity, Source/Host and Clonality can be found in the product name and Key Features section above.

DATASHEET

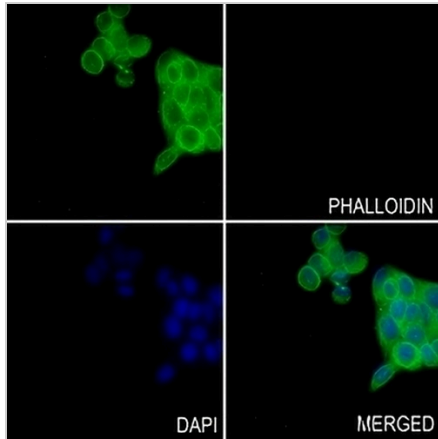
HSC70 Rabbit Polyclonal Antibody

CAT. NO. APA07101

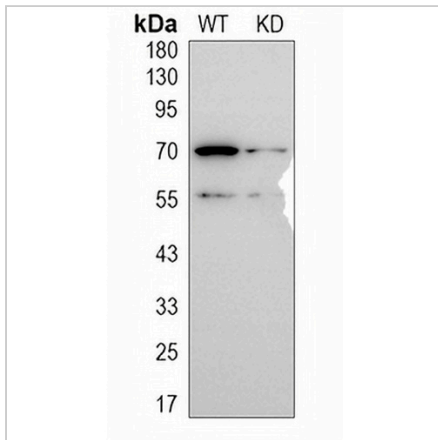
DATA



Western blot analysis of HSC70 expression in HEK293T (A), Hela (B), H460 (C), mouse heart (D), mouse brain (E), rat heart (F), rat muscle (G) whole cell lysates. (Predicted band size: 70 kD; Observed band size: 70 kD)



Immunofluorescent analysis of HSC70 staining in MCF7 cells. Formalin-fixed cells were permeabilized with 0.1% Triton X-100 in TBS for 5-10 minutes and blocked with 3% BSA-PBS for 30 minutes at room temperature. Cells were probed with the primary antibody in 3% BSA-PBS and incubated overnight at 4 °C in a humidified chamber. Cells were washed with PBST and incubated with a AREX® Fluor 488 -conjugated secondary antibody (green) in PBS at room temperature in the dark. Phalloidin - AREX® Fluor 594 was used to stain Actin filaments (red). DAPI was used to stain the cell nuclei (blue).



Western blot analysis of HSC70 expression in wild type (WT) and knockdown (KD) HEK293T cell lysates.

STORAGE

Store at 4°C short term. For long term storage, store at -20°C, avoiding freeze/thaw cycles.

NOTE

For Research Use Only. Not for diagnostic, therapeutics, prophylactic or in vivo use.