

**DATASHEET**

**CD102 Rabbit Polyclonal Antibody**

CAT. NO. APA07116

**KEY FEATURES**

Target	CD102	Source / Host	Rabbit
Reactivity	Human, Mouse	Clonality	Polyclonal
Applications	WB	Conjugation	Unconjugated
Form / Buffer	Liquid in 0.42% Potassium phosphate, 0.87% Sodium chloride, pH 7.3, 30% glycerol, and 0.01% sodium azide.		Storage at -20°C

**BACKGROUND**

Cell adhesion molecule that functions as a receptor ligand of the signaling receptor ITGAL:ITGB2/LFA-1 (lymphocyte-function associated (LFA) molecule 1) ensuring leukocyte cell-cell adhesion on resting cells molecule 1) ensuring leukocyte cell-cell adhesion on resting cells . Also endothelial blood vessels receptor ligand of dendritic cell (DC) CD209 signaling receptor that mediates triggering transendothelial migration of DC presursors from blood into peripheral tissues and, subsequently, into lymphoid tissues . Mediates adhesive interactions important for antigen presentation, lymphocyte recirculation, and other cellular interactions important for immune response and surveillance (Probable).

**APPLICATION**

To ensure optimal assay performance, AREX recommends conducting reagent titration tailored to each testing system for optimal detection results.

WB	1:500 - 1:1000
----	----------------

\*Results are sample-specific. Please refer to your local assay conditions and test parameters for reference.

**PRODUCT OVERVIEW**

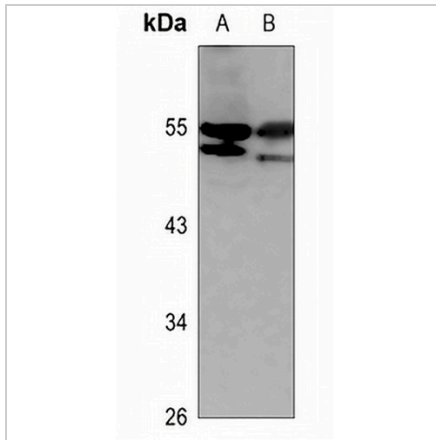
Description	Rabbit polyclonal antibody to CD102
Specificity	Recognizes endogenous levels of CD102 protein.
Antibody Type	Primary antibody
Immunogen	KLH-conjugated synthetic peptide encompassing a sequence within the center region of human CD102. The exact sequence is proprietary.
Purification	The antibody was purified by immunogen affinity chromatography.
Molecular Weight	Predicted: 30 kD; Observed: 55 kD
Form/Buffer	Liquid in 0.42% Potassium phosphate, 0.87% Sodium chloride, pH 7.3, 30% glycerol, and 0.01% sodium azide.
Alternative Names	Intercellular adhesion molecule 2; ICAM-2; CD102
Gene Symbol	ICAM2
Entrez Gene	3384(Human); 15896(Mouse)
SwissProt	P13598(Human); P35330(Mouse)

\*AREX continuously optimizes our products. Webpage content may not reflect the latest updates. For inquiries, please contact [info@arexbio.com](mailto:info@arexbio.com) or your local distributor.

\*Clone Number, Reactivity, Source/Host and Clonality can be found in the product name and Key Features section above.

**DATASHEET****CD102 Rabbit Polyclonal Antibody**

CAT. NO. APA07116

**DATA**

Western blot analysis of CD102 expression in HEK293T (A), H446 (B) whole cell lysates. (Predicted band size: 30 kD; Observed band size: 55 kD)

**STORAGE**

Store at 4°C short term. For long term storage, store at -20°C, avoiding freeze/thaw cycles.

**NOTE**

For Research Use Only. Not for diagnostic, therapeutics, prophylactic or in vivo use.