

**DATASHEET**

**IL-7 Rabbit Polyclonal Antibody**

CAT. NO. APA07133

**KEY FEATURES**

Target	IL-7	Source / Host	Rabbit
Reactivity	Human, Mouse, Rat	Clonality	Polyclonal
Applications	WB	Conjugation	Unconjugated
Form / Buffer	Liquid in 0.42% Potassium phosphate, 0.87% Sodium chloride, pH 7.3, 30% glycerol, and 0.01% sodium azide.		Storage at-20°C

**BACKGROUND**

Hematopoietic cytokine that plays an essential role in the development, expansion, and survival of naive and memory T-cells and B-cells thereby regulating the number of mature lymphocytes and maintaining lymphoid homeostasis . Mechanistically, exerts its biological effects through a receptor composed of IL7RA subunit and the cytokine receptor common subunit gamma/CSF2RG . Binding to the receptor leads to activation of various kinases including JAK1 or JAK3 depending on the cell type and subsequently propagation of signals through activation of several downstream signaling pathways including the PI3K/Akt/mTOR or the JAK-STAT5 .

**APPLICATION**

To ensure optimal assay performance, AREX recommends conducting reagent titration tailored to each testing system for optimal detection results.

WB	1:500 - 1:1000
----	----------------

\*Results are sample-specific. Please refer to your local assay conditions and test parameters for reference.

**PRODUCT OVERVIEW**

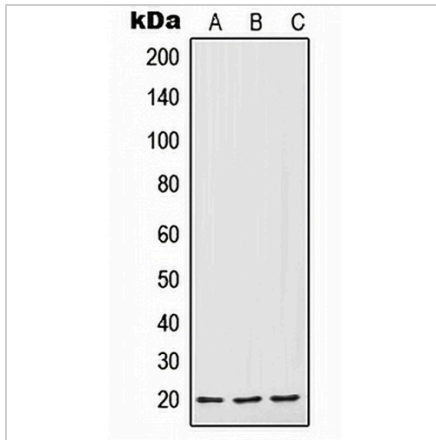
Description	Rabbit polyclonal antibody to IL-7
Specificity	Recognizes endogenous levels of IL-7 protein.
Antibody Type	Primary antibody
Immunogen	KLH-conjugated synthetic peptide encompassing a sequence within the center region of human IL-7. The exact sequence is proprietary.
Purification	The antibody was purified by immunogen affinity chromatography.
Molecular Weight	Predicted: 20 kD; Observed: 20 kD
Form/Buffer	Liquid in 0.42% Potassium phosphate, 0.87% Sodium chloride, pH 7.3, 30% glycerol, and 0.01% sodium azide.
Alternative Names	Interleukin-7; IL-7
Gene Symbol	IL7
Entrez Gene	3574(Human); 16196(Mouse)
SwissProt	P13232(Human); P10168(Mouse); P56478(Rat)

\*AREX continuously optimizes our products. Webpage content may not reflect the latest updates. For inquiries, please contact [info@arexbio.com](mailto:info@arexbio.com) or your local distributor.

\*Clone Number, Reactivity, Source/Host and Clonality can be found in the product name and Key Features section above.

**DATASHEET****IL-7 Rabbit Polyclonal Antibody**

CAT. NO. APA07133

**DATA**

Western blot analysis of IL-7 expression in HepG2 (A), Raw264.7 (B), rat kidney (C) whole cell lysates. (Predicted band size: 20 kD; Observed band size: 20 kD)

**STORAGE**

Store at 4°C short term. For long term storage, store at -20°C, avoiding freeze/thaw cycles.

**NOTE**

For Research Use Only. Not for diagnostic, therapeutics, prophylactic or in vivo use.