

DATASHEET

ITIH1 Rabbit Polyclonal Antibody

CAT. NO. APA07155

KEY FEATURES

Target	ITIH1	Source / Host	Rabbit
Reactivity	Human, Mouse, Rat, Bovine, Pig	Clonality	Polyclonal
Applications	WB	Conjugation	Unconjugated
Form / Buffer	Liquid in 0.42% Potassium phosphate, 0.87% Sodium chloride, pH 7.3, 30% glycerol, and 0.01% sodium azide.		Storage at -20°C

BACKGROUND

May act as a carrier of hyaluronan in serum or as a binding protein between hyaluronan and other matrix protein, including those on cell surfaces in tissues to regulate the localization, synthesis and degradation of hyaluronan which are essential to cells undergoing biological processes.; Contains a potential peptide which could stimulate a broad spectrum of phagocytotic cells.

APPLICATION

To ensure optimal assay performance, AREX recommends conducting reagent titration tailored to each testing system for optimal detection results.

WB	1:500 - 1:1000
----	----------------

*Results are sample-specific. Please refer to your local assay conditions and test parameters for reference.

PRODUCT OVERVIEW

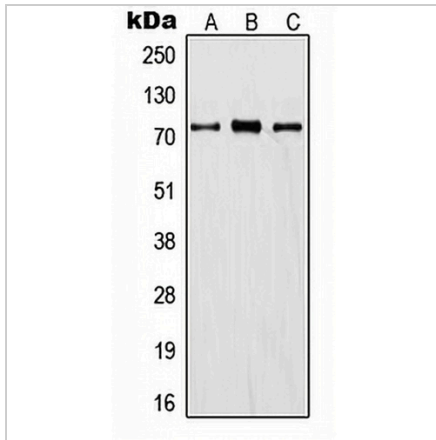
Description	Rabbit polyclonal antibody to ITIH1
Specificity	Recognizes endogenous levels of ITIH1 protein.
Antibody Type	Primary antibody
Immunogen	KLH-conjugated synthetic peptide encompassing a sequence within the center region of human ITIH1. The exact sequence is proprietary.
Purification	The antibody was purified by immunogen affinity chromatography.
Molecular Weight	Predicted: 101 kD; Observed: 71 kD
Form/Buffer	Liquid in 0.42% Potassium phosphate, 0.87% Sodium chloride, pH 7.3, 30% glycerol, and 0.01% sodium azide.
Alternative Names	IGHEP1; Inter-alpha-trypsin inhibitor heavy chain H1; ITI heavy chain H1; ITI-HC1; Inter-alpha-inhibitor heavy chain 1; Inter-alpha-trypsin inhibitor complex component III; Serum-derived hyaluronan-associated protein; SHAP
Gene Symbol	ITIH1
Entrez Gene	3697(Human); 16424(Mouse)
SwissProt	P19827(Human); Q61702(Mouse)

*AREX continuously optimizes our products. Webpage content may not reflect the latest updates. For inquiries, please contact info@arexbio.com or your local distributor.

*Clone Number, Reactivity, Source/Host and Clonality can be found in the product name and Key Features section above.

DATASHEET**ITIH1 Rabbit Polyclonal Antibody**

CAT. NO. APA07155

DATA

Western blot analysis of ITIH1 expression in A549 (A), mouse lung (B), rat kidney (C) whole cell lysates. (Predicted band size: 101 kD; Observed band size: 71 kD)

STORAGE

Store at 4°C short term. For long term storage, store at -20°C, avoiding freeze/thaw cycles.

NOTE

For Research Use Only. Not for diagnostic, therapeutics, prophylactic or in vivo use.