

DATASHEET

ITPKB Rabbit Polyclonal Antibody

CAT. NO. APA07157

KEY FEATURES

| | | | |
|---------------|---|---------------|---------------------|
| Target | ITPKB | Source / Host | Rabbit |
| Reactivity | Human, Mouse, Rat | Clonality | Polyclonal |
| Applications | WB | Conjugation | Unconjugated |
| Form / Buffer | Liquid in 0.42% Potassium phosphate, 0.87% Sodium chloride, pH 7.3, 30% glycerol, and 0.01% sodium azide. | | Storage at -20°C |

BACKGROUND

Catalyzes the phosphorylation of 1D-myo-inositol 1,4,5-trisphosphate (InsP3) into 1D-myo-inositol 1,3,4,5-tetrakisphosphate and participates to the regulation of calcium homeostasis.

APPLICATION

To ensure optimal assay performance, AREX recommends conducting reagent titration tailored to each testing system for optimal detection results.

| | |
|----|----------------|
| WB | 1:500 - 1:1000 |
|----|----------------|

*Results are sample-specific. Please refer to your local assay conditions and test parameters for reference.

PRODUCT OVERVIEW

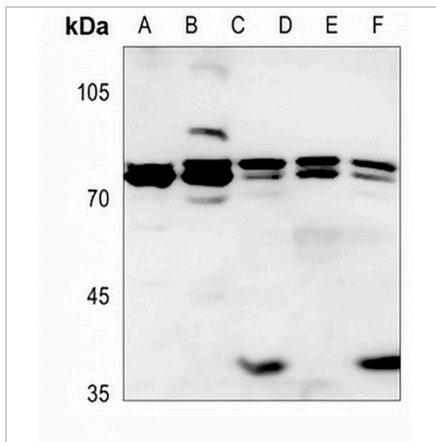
| | |
|-------------------|--|
| Description | Rabbit polyclonal antibody to ITPKB |
| Specificity | Recognizes endogenous levels of ITPKB protein. |
| Antibody Type | Primary antibody |
| Immunogen | KLH-conjugated synthetic peptide encompassing a sequence within the center region of human ITPKB. The exact sequence is proprietary. |
| Purification | The antibody was purified by immunogen affinity chromatography. |
| Molecular Weight | Predicted: 102 kD; Observed: 74 kD |
| Form/Buffer | Liquid in 0.42% Potassium phosphate, 0.87% Sodium chloride, pH 7.3, 30% glycerol, and 0.01% sodium azide. |
| Alternative Names | Inositol-trisphosphate 3-kinase B; Inositol 1,4,5-trisphosphate 3-kinase B; IP3 3-kinase B; IP3K B; InsP 3-kinase B |
| Gene Symbol | ITPKB |
| Entrez Gene | 3707(Human); 54260(Rat) |
| SwissProt | P27987(Human); P42335(Rat) |

*AREX continuously optimizes our products. Webpage content may not reflect the latest updates. For inquiries, please contact info@arexbio.com or your local distributor.

*Clone Number, Reactivity, Source/Host and Clonality can be found in the product name and Key Features section above.

DATASHEET**ITPKB Rabbit Polyclonal Antibody**

CAT. NO. APA07157

DATA

Western blot analysis of ITPKB expression in H1792 (A), PC12 (B), mouse muscle (C), mouse lung (D), rat muscle (E) whole cell lysates. (Predicted band size: 102 kD; Observed band size: 74 kD)

STORAGE

Store at 4°C short term. For long term storage, store at -20°C, avoiding freeze/thaw cycles.

NOTE

For Research Use Only. Not for diagnostic, therapeutics, prophylactic or in vivo use.