

**DATASHEET**

**Cofilin (Phospho-S3) Rabbit Polyclonal Antibody**

CAT. NO. APA07159

**KEY FEATURES**

Target	Cofilin (Phospho-S3)	Source / Host	Rabbit
Reactivity	Human, Mouse, Rat, Bovine, Monkey, Pig, Sheep	Clonality	Polyclonal
Applications	WB, IHC, IF/ICC	Conjugation	Unconjugated
Form / Buffer	Liquid in 0.42% Potassium phosphate, 0.87% Sodium chloride, pH 7.3, 30% glycerol, and 0.01% sodium azide.		Storage at -20°C

**BACKGROUND**

Binds to F-actin and exhibits pH-sensitive F-actin depolymerizing activity . In conjunction with the subcortical maternal complex (SCMC), plays an essential role for zygotes to progress beyond the first embryonic cell divisions via regulation of actin dynamics . Required for the centralization of the mitotic spindle and symmetric division of zygotes . Plays a role in the regulation of cell morphology and cytoskeletal organization in epithelial cells . Required for the up-regulation of atypical chemokine receptor ACKR2 from endosomal compartment to cell membrane, increasing its efficiency in chemokine uptake and degradation . Required for neural tube morphogenesis and neural crest cell migration .

**APPLICATION**

To ensure optimal assay performance, AREX recommends conducting reagent titration tailored to each testing system for optimal detection results.

WB	1:500 - 1:1000
IHC	1:100 - 1:200
IF/ICC	1:100 - 1:500

\*Results are sample-specific. Please refer to your local assay conditions and test parameters for reference.

**PRODUCT OVERVIEW**

Description	Rabbit polyclonal antibody to Cofilin (Phospho-S3)
Specificity	Recognizes endogenous levels of Cofilin protein only when phosphorylated at S3.
Antibody Type	Primary antibody
Immunogen	KLH-conjugated synthetic phosphopeptide corresponding to residues surrounding S3 of human Cofilin protein. The exact sequence is proprietary.
Purification	The antibody was purified by immunogen affinity chromatography.
Molecular Weight	Predicted: 18 kD; Observed: 19 kD
Form/Buffer	Liquid in 0.42% Potassium phosphate, 0.87% Sodium chloride, pH 7.3, 30% glycerol, and 0.01% sodium azide.
Alternative Names	CFL; Cofilin-1; 18 kDa phosphoprotein; p18; Cofilin, non-muscle isoform
Gene Symbol	CFL1
Entrez Gene	1072(Human); 12631(Mouse); 29271(Rat)
SwissProt	P23528(Human); P18760(Mouse); P45592(Rat)

\*AREX continuously optimizes our products. Webpage content MAY not reflect the latest updates. For inquiries, please contact [info@arexbio.com](mailto:info@arexbio.com) or your local distributor.

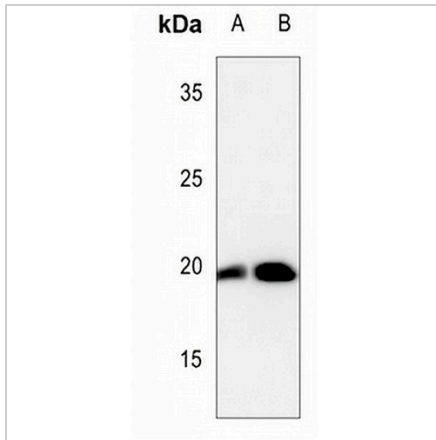
\*Clone Number, Reactivity, Source/Host and Clonality can be found in the product name and Key Features section above.

**DATASHEET**

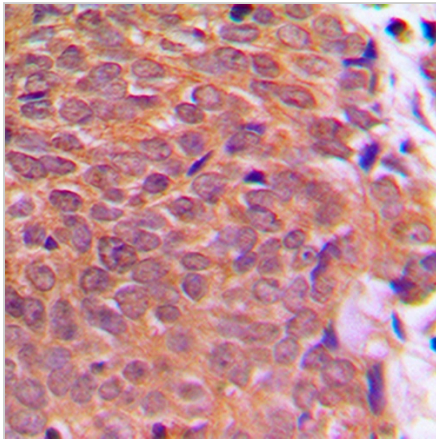
**Cofilin (Phospho-S3) Rabbit Polyclonal Antibody**

CAT. NO. APA07159

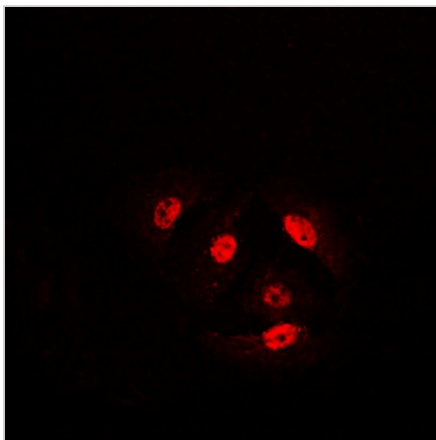
**DATA**



Western blot analysis of Cofilin (Phospho-S3) expression in DLD (A), A375 (B) whole cell lysates. (Predicted band size: 18 kD; Observed band size: 19 kD)



Immunohistochemical analysis of Cofilin (Phospho-S3) staining in human breast cancer formalin fixed paraffin embedded tissue section. The section was pre-treated using heat mediated antigen retrieval with sodium citrate buffer (pH 6.0). The section was then incubated with the antibody at room temperature and detected using an HRP conjugated compact polymer system. DAB was used as the chromogen. The section was then counterstained with haematoxylin and mounted with DPX.



Immunofluorescent analysis of Cofilin (Phospho-S3) staining in HeLa cells. Formalin-fixed cells were permeabilized with 0.1% Triton X-100 in TBS for 5-10 minutes and blocked with 3% BSA-PBS for 30 minutes at room temperature. Cells were probed with the primary antibody in 3% BSA-PBS and incubated overnight at 4 °C in a humidified chamber. Cells were washed with PBST and incubated with a DyLight 594-conjugated secondary antibody (red) in PBS at room temperature in the dark.

**STORAGE**

Store at 4°C short term. For long term storage, store at -20°C, avoiding freeze/thaw cycles.

**NOTE**

For Research Use Only. Not for diagnostic, therapeutics, prophylactic or in vivo use.