

DATASHEET

CD158b1 Rabbit Polyclonal Antibody

CAT. NO. APA07184

KEY FEATURES

| | | | |
|---------------|---|---------------|---------------------|
| Target | CD158b1 | Source / Host | Rabbit |
| Reactivity | Human, Mouse, Rat | Clonality | Polyclonal |
| Applications | WB, IF/ICC | Conjugation | Unconjugated |
| Form / Buffer | Liquid in 0.42% Potassium phosphate, 0.87% Sodium chloride, pH 7.3, 30% glycerol, and 0.01% sodium azide. | | Storage at -20°C |

BACKGROUND

Receptor on natural killer (NK) cells for HLA-Cw1, 3, 7, and 8 allotypes. Inhibits the activity of NK cells thus preventing cell lysis.

APPLICATION

To ensure optimal assay performance, AREX recommends conducting reagent titration tailored to each testing system for optimal detection results.

| | |
|--------|----------------|
| WB | 1:500 - 1:1000 |
| IF/ICC | 1:50 - 1:200 |

*Results are sample-specific. Please refer to your local assay conditions and test parameters for reference.

PRODUCT OVERVIEW

| | |
|-------------------|--|
| Description | Rabbit polyclonal antibody to CD158b1 |
| Specificity | Recognizes endogenous levels of CD158b1 protein. |
| Antibody Type | Primary antibody |
| Immunogen | KLH-conjugated synthetic peptide encompassing a sequence within the center region of human CD158b1. The exact sequence is proprietary. |
| Purification | The antibody was purified by immunogen affinity chromatography. |
| Molecular Weight | Predicted: 38 kD; Observed: 58 kD |
| Form/Buffer | Liquid in 0.42% Potassium phosphate, 0.87% Sodium chloride, pH 7.3, 30% glycerol, and 0.01% sodium azide. |
| Alternative Names | CD158B1; NKAT6; Killer cell immunoglobulin-like receptor 2DL2; CD158 antigen-like family member B1; MHC class I NK cell receptor; Natural killer-associated transcript 6; NKAT-6; p58 natural killer cell receptor clone CL-43; p58 NK receptor CL-43; CD158b1 |
| Gene Symbol | KIR2DL2 |
| Entrez Gene | 3803(Human) |
| SwissProt | P43627(Human) |

*AREX continuously optimizes our products. Webpage content may not reflect the latest updates. For inquiries, please contact info@arexbio.com or your local distributor.

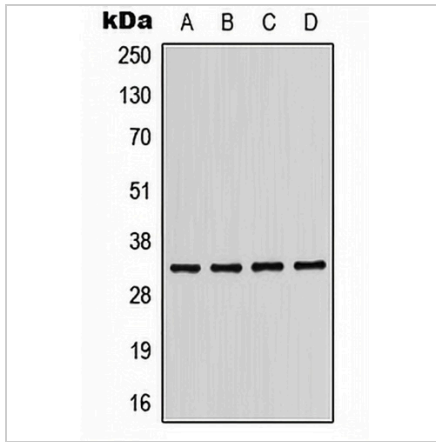
*Clone Number, Reactivity, Source/Host and Clonality can be found in the product name and Key Features section above.

DATASHEET

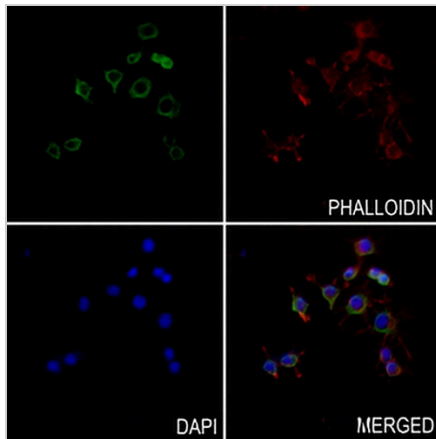
CD158b1 Rabbit Polyclonal Antibody

CAT. NO. APA07184

DATA



Western blot analysis of CD158b1 expression in MDAMB231 (A), Jurkat (B), mouse liver (C), H9C2 (D) whole cell lysates. (Predicted band size: 38 kD; Observed band size: 58 kD)



Immunofluorescent analysis of CD158b1 staining in RAW264.7 cells. Formalin-fixed cells were permeabilized with 0.1% Triton X-100 in TBS for 5-10 minutes and blocked with 3% BSA-PBS for 30 minutes at room temperature. Cells were probed with the primary antibody in 3% BSA-PBS and incubated overnight at 4 °C in a humidified chamber. Cells were washed with PBST and incubated with a AREX® Fluor 488 -conjugated secondary antibody (green) in PBS at room temperature in the dark. Phalloidin - AREX® Fluor 594 was used to stain Actin filaments (red). DAPI was used to stain the cell nuclei (blue).

STORAGE

Store at 4°C short term. For long term storage, store at -20°C, avoiding freeze/thaw cycles.

NOTE

For Research Use Only. Not for diagnostic, therapeutics, prophylactic or in vivo use.