

DATASHEET

CD158g Rabbit Polyclonal Antibody

CAT. NO. APA07185

KEY FEATURES

Target	CD158g	Source / Host	Rabbit
Reactivity	Human, Mouse	Clonality	Polyclonal
Applications	WB	Conjugation	Unconjugated
Form / Buffer	Liquid in 0.42% Potassium phosphate, 0.87% Sodium chloride, pH 7.3, 30% glycerol, and 0.01% sodium azide.		Storage at-20°C

BACKGROUND

Activating natural killer (NK) receptor that recognizes C2 epitopes of HLA-C alleles. Bridging the innate and adaptive immune systems, NK cells express a number of cell surface receptors which either inhibit or stimulate their cytotoxicity receptor that recognizes C2 epitopes of HLA-C alleles. Bridging the innate and adaptive immune systems, NK cells express a number of cell surface receptors which either inhibit or stimulate their cytotoxicity . Able to activate NK cells cytotoxicity and cytokine production such as IFNG . Receptor functions are attenuated even lost in some alleles, such as KIR2DS5*002 represented in this entry .

APPLICATION

To ensure optimal assay performance, AREX recommends conducting reagent titration tailored to each testing system for optimal detection results.

WB	1:500 - 1:1000
----	----------------

*Results are sample-specific. Please refer to your local assay conditions and test parameters for reference.

PRODUCT OVERVIEW

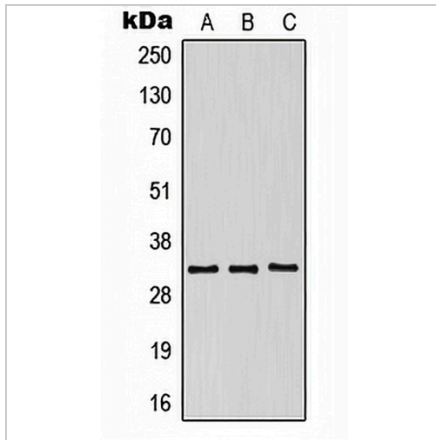
Description	Rabbit polyclonal antibody to CD158g
Specificity	Recognizes endogenous levels of CD158g protein.
Antibody Type	Primary antibody
Immunogen	KLH-conjugated synthetic peptide encompassing a sequence within the center region of human CD158g. The exact sequence is proprietary.
Purification	The antibody was purified by immunogen affinity chromatography.
Molecular Weight	Predicted: 33 kD; Observed: 33 kD
Form/Buffer	Liquid in 0.42% Potassium phosphate, 0.87% Sodium chloride, pH 7.3, 30% glycerol, and 0.01% sodium azide.
Alternative Names	CD158G; NKAT9; Killer cell immunoglobulin-like receptor 2DS5; CD158 antigen-like family member G; MHC class I NK cell receptor; Natural killer-associated transcript 9; NKAT-9; CD158g
Gene Symbol	KIR2DS5
Entrez Gene	3810(Human)
SwissProt	Q14953(Human)

*AREX continuously optimizes our products. Webpage content may not reflect the latest updates. For inquiries, please contact info@arexbio.com or your local distributor.

*Clone Number, Reactivity, Source/Host and Clonality can be found in the product name and Key Features section above.

DATASHEET**CD158g Rabbit Polyclonal Antibody**

CAT. NO. APA07185

DATA

Western blot analysis of CD158g expression in HeLa (A), SP2/0 (B), NIH3T3 (C) whole cell lysates. (Predicted band size: 33 kD; Observed band size: 33 kD)

STORAGE

Store at 4°C short term. For long term storage, store at -20°C, avoiding freeze/thaw cycles.

NOTE

For Research Use Only. Not for diagnostic, therapeutics, prophylactic or in vivo use.