

DATASHEET

Lutropin beta Rabbit Polyclonal Antibody

CAT. NO. APA07210

KEY FEATURES

Target	Lutropin beta	Source / Host	Rabbit
Reactivity	Human, Mouse, Rat	Clonality	Polyclonal
Applications	WB	Conjugation	Unconjugated
Form / Buffer	Liquid in 0.42% Potassium phosphate, 0.87% Sodium chloride, pH 7.3, 30% glycerol, and 0.01% sodium azide.		Storage at -20°C

BACKGROUND

Promotes spermatogenesis and ovulation by stimulating the testes and ovaries to synthesize steroids.

APPLICATION

To ensure optimal assay performance, AREX recommends conducting reagent titration tailored to each testing system for optimal detection results.

WB	1:500 - 1:1000
----	----------------

*Results are sample-specific. Please refer to your local assay conditions and test parameters for reference.

PRODUCT OVERVIEW

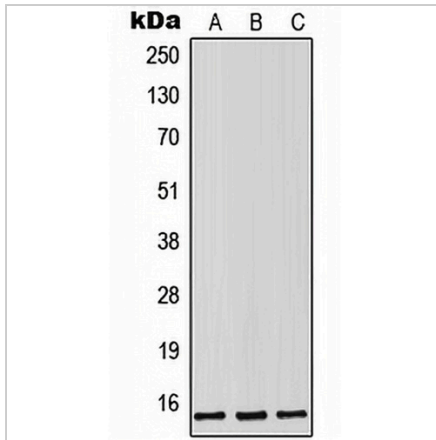
Description	Rabbit polyclonal antibody to Lutropin beta
Specificity	Recognizes endogenous levels of Lutropin beta protein.
Antibody Type	Primary antibody
Immunogen	KLH-conjugated synthetic peptide encompassing a sequence within the center region of human Lutropin beta. The exact sequence is proprietary.
Purification	The antibody was purified by immunogen affinity chromatography.
Molecular Weight	Predicted: 15 kD; Observed: 15 kD
Form/Buffer	Liquid in 0.42% Potassium phosphate, 0.87% Sodium chloride, pH 7.3, 30% glycerol, and 0.01% sodium azide.
Alternative Names	Lutropin subunit beta; Lutropin beta chain; Luteinizing hormone subunit beta; LH-B; LSH-B; LSH-beta
Gene Symbol	LHB
Entrez Gene	3972(Human); 25329(Rat)
SwissProt	P01229(Human); O09108(Mouse); P01230(Rat)

*AREX continuously optimizes our products. Webpage content may not reflect the latest updates. For inquiries, please contact info@arexbio.com or your local distributor.

*Clone Number, Reactivity, Source/Host and Clonality can be found in the product name and Key Features section above.

DATASHEET**Lutropin beta Rabbit Polyclonal Antibody**

CAT. NO. APA07210

DATA

Western blot analysis of Lutropin beta expression in HEK293T (A), SP2/O (B), PC12 (C) whole cell lysates. (Predicted band size: 15 kD; Observed band size: 15 kD)

STORAGE

Store at 4°C short term. For long term storage, store at -20°C, avoiding freeze/thaw cycles.

NOTE

For Research Use Only. Not for diagnostic, therapeutics, prophylactic or in vivo use.