

DATASHEET

TNF beta Rabbit Polyclonal Antibody

CAT. NO. APA07221

KEY FEATURES

Target	TNF beta	Source / Host	Rabbit
Reactivity	Human, Mouse, Rat	Clonality	Polyclonal
Applications	WB, IHC, IF/ICC	Conjugation	Unconjugated
Form / Buffer	Liquid in 0.42% Potassium phosphate, 0.87% Sodium chloride, pH 7.3, 30% glycerol, and 0.01% sodium azide.		Storage at-20°C

BACKGROUND

Cytokine that in its homotrimeric form binds to TNFRSF1A/TNFR1, TNFRSF1B/TNFR and TNFRSF14/HVEM . In its heterotrimeric form with LTB binds to TNFRSF3/LTBR . Lymphotoxin is produced by lymphocytes and is cytotoxic for a wide range of tumor cells in vitro and in vivo.

APPLICATION

To ensure optimal assay performance, AREX recommends conducting reagent titration tailored to each testing system for optimal detection results.

WB	1:500 - 1:1000
IHC	1:50 - 1:100
IF/ICC	1:50 - 1:200

*Results are sample-specific. Please refer to your local assay conditions and test parameters for reference.

PRODUCT OVERVIEW

Description	Rabbit polyclonal antibody to TNF beta
Specificity	Recognizes endogenous levels of TNF beta protein.
Antibody Type	Primary antibody
Immunogen	KLH-conjugated synthetic peptide encompassing a sequence within the center region of human TNF beta. The exact sequence is proprietary.
Purification	The antibody was purified by immunogen affinity chromatography.
Molecular Weight	Predicted: 22 kD; Observed: 22 kD
Form/Buffer	Liquid in 0.42% Potassium phosphate, 0.87% Sodium chloride, pH 7.3, 30% glycerol, and 0.01% sodium azide.
Alternative Names	TNFB; TNFSF1; Lymphotoxin-alpha; LT-alpha; TNF-beta; Tumor necrosis factor ligand superfamily member 1
Gene Symbol	LTA
Entrez Gene	4049(Human)
SwissProt	P01374(Human)

*AREX continuously optimizes our products. Webpage content may not reflect the latest updates. For inquiries, please contact info@arexbio.com or your local distributor.

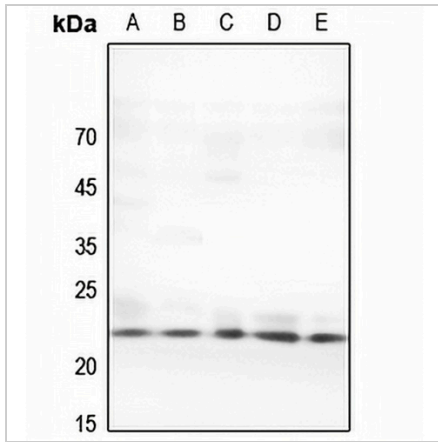
*Clone Number, Reactivity, Source/Host and Clonality can be found in the product name and Key Features section above.

DATASHEET

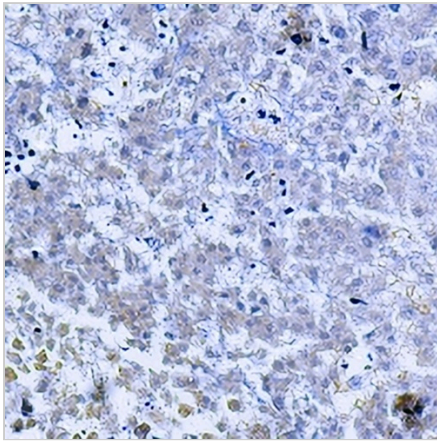
TNF beta Rabbit Polyclonal Antibody

CAT. NO. APA07221

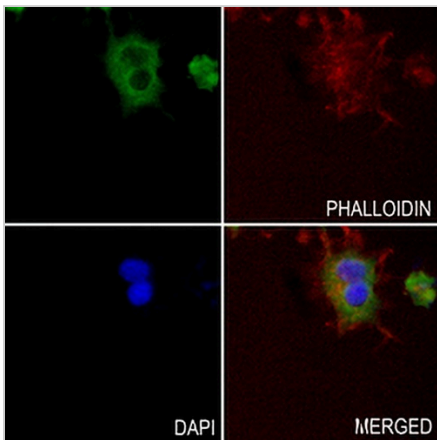
DATA



Western blot analysis of TNF beta expression in HEK293T (A), HeLa (B), mouse testis (C), rat spleen (D), rat testis (E) whole cell lysates. (Predicted band size: 22 kD; Observed band size: 22 kD)



Immunohistochemical analysis of TNF beta staining in human liver cancer formalin fixed paraffin embedded tissue section. The section was pre-treated using heat mediated antigen retrieval with sodium citrate buffer (pH 6.0). The section was then incubated with the antibody at room temperature and detected using an HRP conjugated compact polymer system. DAB was used as the chromogen. The section was then counterstained with haematoxylin and mounted with DPX.



Immunofluorescent analysis of TNF beta staining in RAW264.7 cells. Formalin-fixed cells were permeabilized with 0.1% Triton X-100 in TBS for 5-10 minutes and blocked with 3% BSA-PBS for 30 minutes at room temperature. Cells were probed with the primary antibody in 3% BSA-PBS and incubated overnight at 4 °C in a humidified chamber. Cells were washed with PBST and incubated with a AREX® Fluor 488 -conjugated secondary antibody (green) in PBS at room temperature in the dark. Phalloidin - AREX® Fluor 594 was used to stain Actin filaments (red). DAPI was used to stain the cell nuclei (blue).

STORAGE

Store at 4°C short term. For long term storage, store at -20°C, avoiding freeze/thaw cycles.

NOTE

For Research Use Only. Not for diagnostic, therapeutics, prophylactic or in vivo use.