

DATASHEET

MAGEA1 Rabbit Polyclonal Antibody

CAT. NO. APA07236

KEY FEATURES

| | | | |
|---------------|---|---------------|---------------------|
| Target | MAGEA1 | Source / Host | Rabbit |
| Reactivity | Human, Monkey | Clonality | Polyclonal |
| Applications | WB, IHC | Conjugation | Unconjugated |
| Form / Buffer | Liquid in 0.42% Potassium phosphate, 0.87% Sodium chloride, pH 7.3, 30% glycerol, and 0.01% sodium azide. | | Storage at -20°C |

BACKGROUND

May be involved in transcriptional regulation through interaction with SNW1 and recruiting histone deacetylase HDAC1. May inhibit notch intracellular domain (NICD) transactivation. May play a role in embryonal development and tumor transformation or aspects of tumor progression. Antigen recognized on a melanoma by autologous cytolytic T-lymphocytes.

APPLICATION

To ensure optimal assay performance, AREX recommends conducting reagent titration tailored to each testing system for optimal detection results.

| | |
|-----|----------------|
| WB | 1:500 - 1:1000 |
| IHC | 1:100 - 1:200 |

*Results are sample-specific. Please refer to your local assay conditions and test parameters for reference.

PRODUCT OVERVIEW

| | |
|-------------------|---|
| Description | Rabbit polyclonal antibody to MAGEA1 |
| Specificity | Recognizes endogenous levels of MAGEA1 protein. |
| Antibody Type | Primary antibody |
| Immunogen | KLH-conjugated synthetic peptide encompassing a sequence within the C-term region of human MAGEA1. The exact sequence is proprietary. |
| Purification | The antibody was purified by immunogen affinity chromatography. |
| Molecular Weight | Predicted: 34 kD; Observed: 46 kD |
| Form/Buffer | Liquid in 0.42% Potassium phosphate, 0.87% Sodium chloride, pH 7.3, 30% glycerol, and 0.01% sodium azide. |
| Alternative Names | MAGE1; MAGE1A; Melanoma-associated antigen 1; Antigen MZ2-E; Cancer/testis antigen 1.1; CT1.1; MAGE-1 antigen |
| Gene Symbol | MAGEA1 |
| Entrez Gene | 4100(Human) |
| SwissProt | P43355(Human) |

*AREX continuously optimizes our products. Webpage content may not reflect the latest updates. For inquiries, please contact info@arexbio.com or your local distributor.

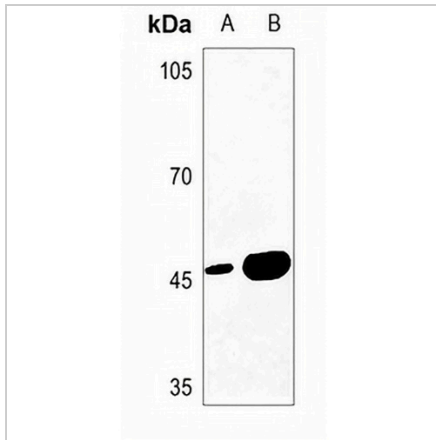
*Clone Number, Reactivity, Source/Host and Clonality can be found in the product name and Key Features section above.

DATASHEET

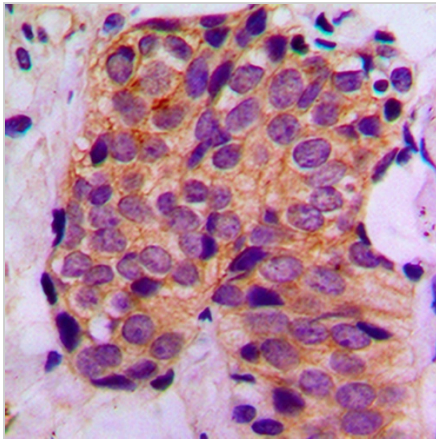
MAGEA1 Rabbit Polyclonal Antibody

CAT. NO. APA07236

DATA



Western blot analysis of MAGEA1 expression in U2OS (A), A375 (B) whole cell lysates. (Predicted band size: 34 kD; Observed band size: 46 kD)



Immunohistochemical analysis of MAGEA1 staining in human breast cancer formalin fixed paraffin embedded tissue section. The section was pre-treated using heat mediated antigen retrieval with sodium citrate buffer (pH 6.0). The section was then incubated with the antibody at room temperature and detected using an HRP conjugated compact polymer system. DAB was used as the chromogen. The section was then counterstained with haematoxylin and mounted with DPX.

STORAGE

Store at 4°C short term. For long term storage, store at -20°C, avoiding freeze/thaw cycles.

NOTE

For Research Use Only. Not for diagnostic, therapeutics, prophylactic or in vivo use.