

DATASHEET

MAGEA3/6 Rabbit Polyclonal Antibody

CAT. NO. APA07237

KEY FEATURES

Target	MAGEA3/6	Source / Host	Rabbit
Reactivity	Human, Mouse, Rat	Clonality	Polyclonal
Applications	WB	Conjugation	Unconjugated
Form / Buffer	Liquid in 0.42% Potassium phosphate, 0.87% Sodium chloride, pH 7.3, 30% glycerol, and 0.01% sodium azide.		Storage at -20°C

BACKGROUND

Activator of ubiquitin ligase activity of RING-type zinc finger-containing E3 ubiquitin-protein ligases that acts as a repressor of autophagy . May enhance ubiquitin ligase activity of TRIM28 and stimulate p53/TP53 ubiquitination by TRIM28. Proposed to act through recruitment and/or stabilization of the Ubl-conjugating enzyme (E2) at the E3:substrate complex . May play a role in tumor transformation or aspects of tumor progression . In vitro promotes cell viability in melanoma cell lines .

APPLICATION

To ensure optimal assay performance, AREX recommends conducting reagent titration tailored to each testing system for optimal detection results.

WB	1:500 - 1:1000
----	----------------

*Results are sample-specific. Please refer to your local assay conditions and test parameters for reference.

PRODUCT OVERVIEW

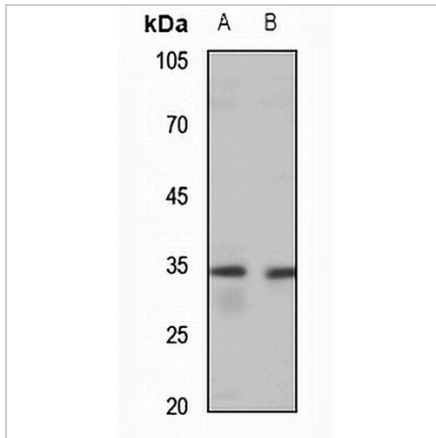
Description	Rabbit polyclonal antibody to MAGEA6
Specificity	Recognizes endogenous levels of MAGEA6 protein.
Antibody Type	Primary antibody
Immunogen	KLH-conjugated synthetic peptide encompassing a sequence within the center region of human MAGEA6. The exact sequence is proprietary.
Purification	The antibody was purified by immunogen affinity chromatography.
Molecular Weight	Predicted: 34 kD; Observed: 35 kD
Form/Buffer	Liquid in 0.42% Potassium phosphate, 0.87% Sodium chloride, pH 7.3, 30% glycerol, and 0.01% sodium azide.
Alternative Names	MAGE6; Melanoma-associated antigen 6; Cancer/testis antigen 1.6; CT1.6; MAGE-6 antigen; MAGE3B antigen
Gene Symbol	MAGEA6
Entrez Gene	4105(Human)
SwissProt	P43360(Human)

*AREX continuously optimizes our products. Webpage content may not reflect the latest updates. For inquiries, please contact info@arexbio.com or your local distributor.

*Clone Number, Reactivity, Source/Host and Clonality can be found in the product name and Key Features section above.

DATASHEET**MAGEA3/6 Rabbit Polyclonal Antibody**

CAT. NO. APA07237

DATA

Western blot analysis of MAGEA3/6 expression in mouse muscle (A), rat kidney (B) whole cell lysates. (Predicted band size: 34 kD; Observed band size: 35 kD)

STORAGE

Store at 4°C short term. For long term storage, store at -20°C, avoiding freeze/thaw cycles.

NOTE

For Research Use Only. Not for diagnostic, therapeutics, prophylactic or in vivo use.