

DATASHEET

Myotubularin Rabbit Polyclonal Antibody

CAT. NO. APA07285

KEY FEATURES

Target	Myotubularin	Source / Host	Rabbit
Reactivity	Human, Mouse, Rat	Clonality	Polyclonal
Applications	WB, IF/ICC	Conjugation	Unconjugated
Form / Buffer	Liquid in 0.42% Potassium phosphate, 0.87% Sodium chloride, pH 7.3, 30% glycerol, and 0.01% sodium azide.		Storage at -20°C

BACKGROUND

Lipid phosphatase which dephosphorylates phosphatidylinositol 3-monophosphate (PI3P) and phosphatidylinositol 3,5-bisphosphate (PI(3,5)P2) and phosphatidylinositol 3,5-bisphosphate (PI(3,5)P2) . Has also been shown to dephosphorylate phosphotyrosine- and phosphoserine-containing peptides . Negatively regulates EGFR degradation through regulation of EGFR trafficking from the late endosome to the lysosome . Plays a role in vacuolar formation and morphology. Regulates desmin intermediate filament assembly and architecture . Plays a role in mitochondrial morphology and positioning . Required for skeletal muscle maintenance but not for myogenesis . In skeletal muscles, stabilizes MTMR12 protein levels .

APPLICATION

To ensure optimal assay performance, AREX recommends conducting reagent titration tailored to each testing system for optimal detection results.

WB	1:500 - 1:1000
IF/ICC	1:50 - 1:200

*Results are sample-specific. Please refer to your local assay conditions and test parameters for reference.

PRODUCT OVERVIEW

Description	Rabbit polyclonal antibody to Myotubularin
Specificity	Recognizes endogenous levels of Myotubularin protein.
Antibody Type	Primary antibody
Immunogen	KLH-conjugated synthetic peptide encompassing a sequence within the center region of human Myotubularin. The exact sequence is proprietary.
Purification	The antibody was purified by immunogen affinity chromatography.
Molecular Weight	Predicted: 69 kD; Observed: 70 kD
Form/Buffer	Liquid in 0.42% Potassium phosphate, 0.87% Sodium chloride, pH 7.3, 30% glycerol, and 0.01% sodium azide.
Alternative Names	CG2; Myotubularin
Gene Symbol	MTM1
Entrez Gene	4534(Human); 17772(Mouse)
SwissProt	Q13496(Human); Q9Z2C5(Mouse)

*AREX continuously optimizes our products. Webpage content may not reflect the latest updates. For inquiries, please contact info@arexbio.com or your local distributor.

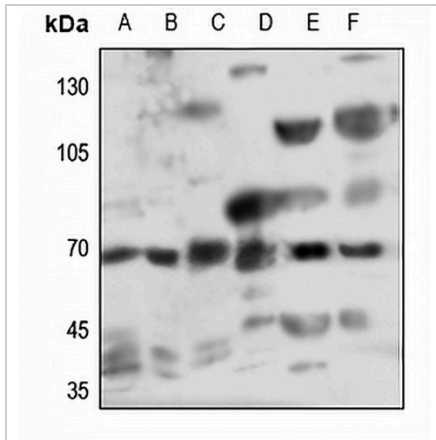
*Clone Number, Reactivity, Source/Host and Clonality can be found in the product name and Key Features section above.

DATASHEET

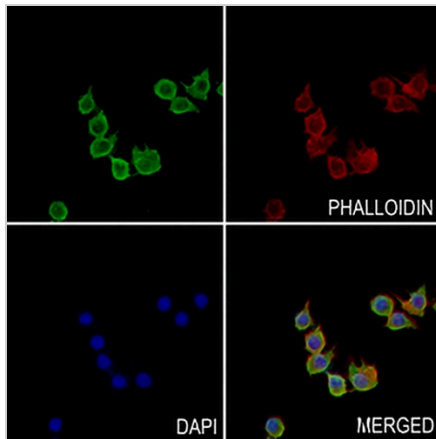
Myotubularin Rabbit Polyclonal Antibody

CAT. NO. APA07285

DATA



Western blot analysis of Myotubularin expression in HEK293T (A), HeLa (B), LOVO (C), mouse liver (D), mouse muscle (E), rat muscle (F) whole cell lysates. (Predicted band size: 69 kD; Observed band size: 70 kD)



Immunofluorescent analysis of Myotubularin staining in RAW264.7 cells. Formalin-fixed cells were permeabilized with 0.1% Triton X-100 in TBS for 5-10 minutes and blocked with 3% BSA-PBS for 30 minutes at room temperature. Cells were probed with the primary antibody in 3% BSA-PBS and incubated overnight at 4 °C in a humidified chamber. Cells were washed with PBST and incubated with a AREX® Fluor 488 -conjugated secondary antibody (green) in PBS at room temperature in the dark. Phalloidin - AREX® Fluor 594 was used to stain Actin filaments (red). DAPI was used to stain the cell nuclei (blue).

STORAGE

Store at 4°C short term. For long term storage, store at -20°C, avoiding freeze/thaw cycles.

NOTE

For Research Use Only. Not for diagnostic, therapeutics, prophylactic or in vivo use.