

**DATASHEET**

**MYBL2 (Phospho-S577) Rabbit Polyclonal Antibody**

CAT. NO. APA07290

**KEY FEATURES**

Target	MYBL2 (Phospho-S577)	Source / Host	Rabbit
Reactivity	Human, Mouse, Rat, Chicken, Monkey	Clonality	Polyclonal
Applications	WB, IF/ICC	Conjugation	Unconjugated
Form / Buffer	Liquid in 0.42% Potassium phosphate, 0.87% Sodium chloride, pH 7.3, 30% glycerol, and 0.01% sodium azide.		Storage at -20°C

**BACKGROUND**

Transcription factor involved in the regulation of cell survival, proliferation, and differentiation. Transactivates the expression of the CLU gene.

**APPLICATION**

To ensure optimal assay performance, AREX recommends conducting reagent titration tailored to each testing system for optimal detection results.

WB	1:500 - 1:1000
IF/ICC	1:50 - 1:200

\*Results are sample-specific. Please refer to your local assay conditions and test parameters for reference.

**PRODUCT OVERVIEW**

Description	Rabbit polyclonal antibody to MYBL2 (Phospho-S577)
Specificity	Recognizes endogenous levels of MYBL2 protein only when phosphorylated at S577.
Antibody Type	Primary antibody
Immunogen	KLH-conjugated synthetic phosphopeptide corresponding to residues surrounding S577 of human MYBL2 protein. The exact sequence is proprietary.
Purification	The antibody was purified by immunogen affinity chromatography.
Molecular Weight	Predicted: 78 kD; Observed: 110 kD
Form/Buffer	Liquid in 0.42% Potassium phosphate, 0.87% Sodium chloride, pH 7.3, 30% glycerol, and 0.01% sodium azide.
Alternative Names	BMYP; Myb-related protein B; B-Myb; Myb-like protein 2
Gene Symbol	MYBL2
Entrez Gene	4605(Human); 17865(Mouse)
SwissProt	P10244(Human); P48972(Mouse)

\*AREX continuously optimizes our products. Webpage content may not reflect the latest updates. For inquiries, please contact [info@arexbio.com](mailto:info@arexbio.com) or your local distributor.

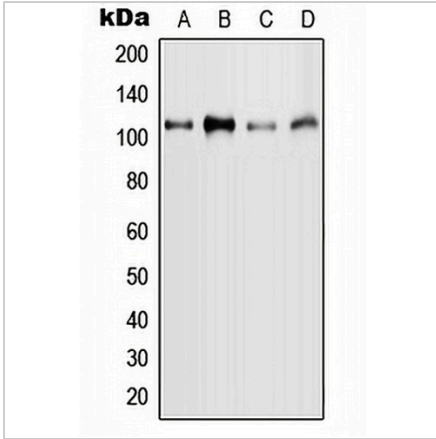
\*Clone Number, Reactivity, Source/Host and Clonality can be found in the product name and Key Features section above.

**DATASHEET**

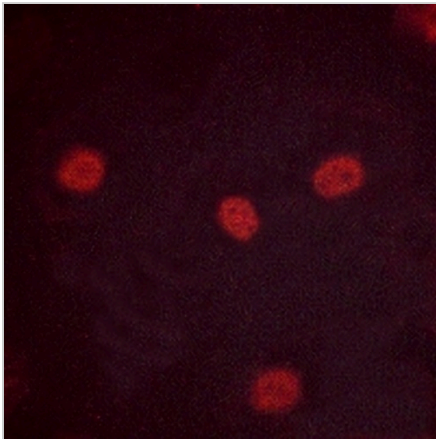
**MYBL2 (Phospho-S577) Rabbit Polyclonal Antibody**

CAT. NO. APA07290

**DATA**



Western blot analysis of MYBL2 (Phospho-S577) expression in MCF7 (A), HeLa (B), mouse liver (C), rat liver (D) whole cell lysates. (Predicted band size: 78 kD; Observed band size: 110 kD)



Immunofluorescent analysis of MYBL2 (Phospho-S577) staining in HeLa cells. Formalin-fixed cells were permeabilized with 0.1% Triton X-100 in TBS for 5-10 minutes and blocked with 3% BSA-PBS for 30 minutes at room temperature. Cells were probed with the primary antibody in 3% BSA-PBS and incubated overnight at 4 °C in a humidified chamber. Cells were washed with PBST and incubated with a AREX® Fluor 594-conjugated secondary antibody (red) in PBS at room temperature in the dark.

**STORAGE**

Store at 4°C short term. For long term storage, store at -20°C, avoiding freeze/thaw cycles.

**NOTE**

For Research Use Only. Not for diagnostic, therapeutics, prophylactic or in vivo use.