

DATASHEET

MYL6 Rabbit Polyclonal Antibody

CAT. NO. APA07297

KEY FEATURES

Target	MYL6	Source / Host	Rabbit
Reactivity	Human, Mouse	Clonality	Polyclonal
Applications	WB	Conjugation	Unconjugated
Form / Buffer	Liquid in 0.42% Potassium phosphate, 0.87% Sodium chloride, pH 7.3, 30% glycerol, and 0.01% sodium azide.		Storage at -20°C

BACKGROUND

Regulatory light chain of myosin. Does not bind calcium.

APPLICATION

To ensure optimal assay performance, AREX recommends conducting reagent titration tailored to each testing system for optimal detection results.

WB	1:500 - 1:1000
----	----------------

*Results are sample-specific. Please refer to your local assay conditions and test parameters for reference.

PRODUCT OVERVIEW

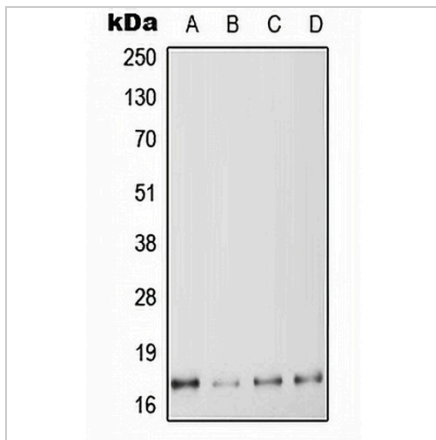
Description	Rabbit polyclonal antibody to MYL6
Specificity	Recognizes endogenous levels of MYL6 protein.
Antibody Type	Primary antibody
Immunogen	KLH-conjugated synthetic peptide encompassing a sequence within the center region of human MYL6. The exact sequence is proprietary.
Purification	The antibody was purified by immunogen affinity chromatography.
Molecular Weight	Predicted: 16 kD; Observed: 14 kD
Form/Buffer	Liquid in 0.42% Potassium phosphate, 0.87% Sodium chloride, pH 7.3, 30% glycerol, and 0.01% sodium azide.
Alternative Names	Myosin light polypeptide 6; 17 kDa myosin light chain; LC17; Myosin light chain 3; MLC-3; Myosin light chain alkali 3; Myosin light chain A3; Smooth muscle and nonmuscle myosin light chain alkali 6
Gene Symbol	MYL6
Entrez Gene	4637(Human); 17904(Mouse)
SwissProt	P60660(Human); Q60605(Mouse)

*AREX continuously optimizes our products. Webpage content may not reflect the latest updates. For inquiries, please contact info@arexbio.com or your local distributor.

*Clone Number, Reactivity, Source/Host and Clonality can be found in the product name and Key Features section above.

DATASHEET**MYL6 Rabbit Polyclonal Antibody**

CAT. NO. APA07297

DATA

Western blot analysis of MYL6 expression in HeLa (A), K562 (B), SP2/0 (C), H9C2 (D) whole cell lysates. (Predicted band size: 16 kD; Observed band size: 14 kD)

STORAGE

Store at 4°C short term. For long term storage, store at -20°C, avoiding freeze/thaw cycles.

NOTE

For Research Use Only. Not for diagnostic, therapeutics, prophylactic or in vivo use.