

DATASHEET

MYO6 Rabbit Polyclonal Antibody

CAT. NO. APA07299

KEY FEATURES

Target	MYO6	Source / Host	Rabbit
Reactivity	Human, Mouse, Rat, Chicken, Pig	Clonality	Polyclonal
Applications	WB, IF/ICC	Conjugation	Unconjugated
Form / Buffer	Liquid in 0.42% Potassium phosphate, 0.87% Sodium chloride, pH 7.3, 30% glycerol, and 0.01% sodium azide.		Storage at -20°C

BACKGROUND

Myosins are actin-based motor molecules with ATPase activity . Unconventional myosins serve in intracellular movements . Myosin 6 is a reverse-direction motor protein that moves towards the minus-end of actin filaments . Has slow rate of actin-activated ADP release due to weak ATP binding . Functions in a variety of intracellular processes such as vesicular membrane trafficking and cell migration . Required for the structural integrity of the Golgi apparatus via the p53-dependent pro-survival pathway . Appears to be involved in a very early step of clathrin-mediated endocytosis in polarized epithelial cells . Together with TOM1, mediates delivery of endocytic cargo to autophagosomes thereby promoting autophagosome maturation and driving fusion with lysosomes .

APPLICATION

To ensure optimal assay performance, AREX recommends conducting reagent titration tailored to each testing system for optimal detection results.

WB	1:500 - 1:1000
IF/ICC	1:50 - 1:200

*Results are sample-specific. Please refer to your local assay conditions and test parameters for reference.

PRODUCT OVERVIEW

Description	Rabbit polyclonal antibody to MYO6
Specificity	Recognizes endogenous levels of MYO6 protein.
Antibody Type	Primary antibody
Immunogen	KLH-conjugated synthetic peptide encompassing a sequence within the N-term region of human MYO6. The exact sequence is proprietary.
Purification	The antibody was purified by immunogen affinity chromatography.
Molecular Weight	Predicted: 149 kD; Observed: 149 kD
Form/Buffer	Liquid in 0.42% Potassium phosphate, 0.87% Sodium chloride, pH 7.3, 30% glycerol, and 0.01% sodium azide.
Alternative Names	KIAA0389; Unconventional myosin-VI; Unconventional myosin-6
Gene Symbol	MYO6
Entrez Gene	4646(Human)
SwissProt	Q9UM54(Human); Q64331(Mouse)

*AREX continuously optimizes our products. Webpage content may not reflect the latest updates. For inquiries, please contact info@arexbio.com or your local distributor.

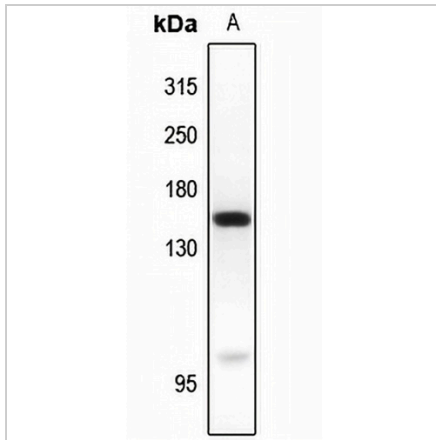
*Clone Number, Reactivity, Source/Host and Clonality can be found in the product name and Key Features section above.

DATASHEET

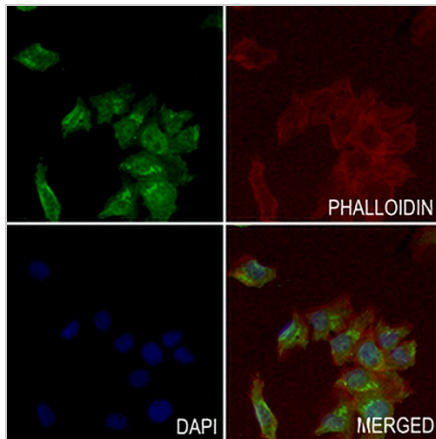
MYO6 Rabbit Polyclonal Antibody

CAT. NO. APA07299

DATA



Western blot analysis of MYO6 expression in AML12 (A) whole cell lysates. (Predicted band size: 149 kD; Observed band size: 149 kD)



Immunofluorescent analysis of MYO6 staining in HepG2 cells. Formalin-fixed cells were permeabilized with 0.1% Triton X-100 in TBS for 5-10 minutes and blocked with 3% BSA-PBS for 30 minutes at room temperature. Cells were probed with the primary antibody in 3% BSA-PBS and incubated overnight at 4 °C in a humidified chamber. Cells were washed with PBST and incubated with a AREX® Fluor 488 -conjugated secondary antibody (green) in PBS at room temperature in the dark. Phalloidin - AREX® Fluor 594 was used to stain Actin filaments (red). DAPI was used to stain the cell nuclei (blue).

STORAGE

Store at 4°C short term. For long term storage, store at -20°C, avoiding freeze/thaw cycles.

NOTE

For Research Use Only. Not for diagnostic, therapeutics, prophylactic or in vivo use.