

DATASHEET

NFRKB Rabbit Polyclonal Antibody

CAT. NO. APA07320

KEY FEATURES

Target	NFRKB	Source / Host	Rabbit
Reactivity	Human, Monkey	Clonality	Polyclonal
Applications	WB	Conjugation	Unconjugated
Form / Buffer	Liquid in 0.42% Potassium phosphate, 0.87% Sodium chloride, pH 7.3, 30% glycerol, and 0.01% sodium azide.		Storage at -20°C

BACKGROUND

Binds to the DNA consensus sequence 5'-GGGGAATCTCC-3'.

APPLICATION

To ensure optimal assay performance, AREX recommends conducting reagent titration tailored to each testing system for optimal detection results.

WB	1:500 - 1:1000
----	----------------

*Results are sample-specific. Please refer to your local assay conditions and test parameters for reference.

PRODUCT OVERVIEW

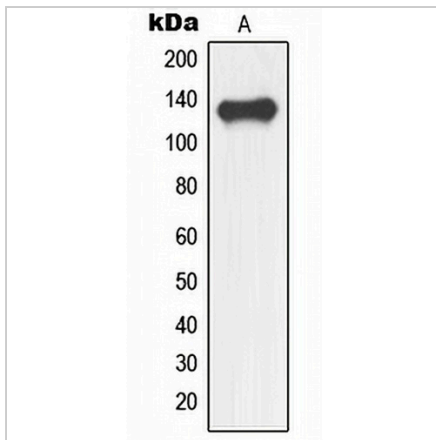
Description	Rabbit polyclonal antibody to NFRKB
Specificity	Recognizes endogenous levels of NFRKB protein.
Antibody Type	Primary antibody
Immunogen	KLH-conjugated synthetic peptide encompassing a sequence within the center region of human NFRKB. The exact sequence is proprietary.
Purification	The antibody was purified by immunogen affinity chromatography.
Molecular Weight	Predicted: 139 kD; Observed: 139 kD
Form/Buffer	Liquid in 0.42% Potassium phosphate, 0.87% Sodium chloride, pH 7.3, 30% glycerol, and 0.01% sodium azide.
Alternative Names	INO80G; Nuclear factor related to kappa-B-binding protein; DNA-binding protein R kappa-B; INO80 complex subunit G
Gene Symbol	NFRKB
Entrez Gene	4798(Human)
SwissProt	Q6P4R8(Human)

*AREX continuously optimizes our products. Webpage content may not reflect the latest updates. For inquiries, please contact info@arexbio.com or your local distributor.

*Clone Number, Reactivity, Source/Host and Clonality can be found in the product name and Key Features section above.

DATASHEET**NFRKB Rabbit Polyclonal Antibody**

CAT. NO. APA07320

DATA

Western blot analysis of NFRKB expression in human fetal brain (A) whole cell lysates.
(Predicted band size: 139 kD; Observed band size: 139 kD)

STORAGE

Store at 4°C short term. For long term storage, store at -20°C, avoiding freeze/thaw cycles.

NOTE

For Research Use Only. Not for diagnostic, therapeutics, prophylactic or in vivo use.