

**DATASHEET**

**nm23-H2 Rabbit Polyclonal Antibody**

CAT. NO. APA07326

**KEY FEATURES**

Target	nm23-H2	Source / Host	Rabbit
Reactivity	Human, Mouse, Rat	Clonality	Polyclonal
Applications	WB	Conjugation	Unconjugated
Form / Buffer	Liquid in 0.42% Potassium phosphate, 0.87% Sodium chloride, pH 7.3, 30% glycerol, and 0.01% sodium azide.		Storage at-20°C

**BACKGROUND**

Catalyzes the transfer of a gamma-phosphoryl group from a nucleoside triphosphate, mainly ATP, to a nucleoside diphosphate via a ping-pong mechanism involving a phosphohistidine intermediate, therefore contributing to the nucleoside triphosphate homeostasis . Also functions as a histidine protein kinase by transferring the phosphoryl group from the phosphohistidine intermediate to a histidine residue in target proteins . Phosphorylates the GNB1 subunit of heterotrimeric G proteins at 'His-266', generating a high-energy phosphate group that promotes GTP formation and enables receptor-independent activation of heterotrimeric G proteins .

**APPLICATION**

To ensure optimal assay performance, AREX recommends conducting reagent titration tailored to each testing system for optimal detection results.

WB	1:500 - 1:1000
----	----------------

\*Results are sample-specific. Please refer to your local assay conditions and test parameters for reference.

**PRODUCT OVERVIEW**

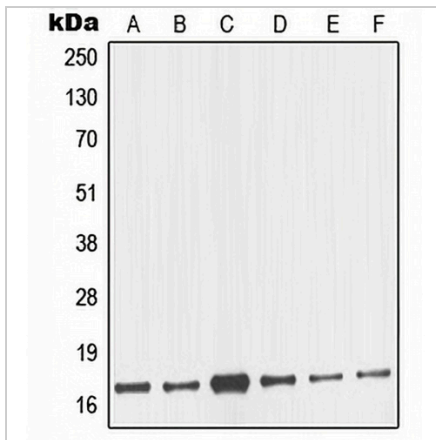
Description	Rabbit polyclonal antibody to nm23-H2
Specificity	Recognizes endogenous levels of nm23-H2 protein.
Antibody Type	Primary antibody
Immunogen	KLH-conjugated synthetic peptide encompassing a sequence within the center region of human nm23-H2. The exact sequence is proprietary.
Purification	The antibody was purified by immunogen affinity chromatography.
Molecular Weight	Predicted: 17; Observed: 17 kD
Form/Buffer	Liquid in 0.42% Potassium phosphate, 0.87% Sodium chloride, pH 7.3, 30% glycerol, and 0.01% sodium azide.
Alternative Names	NM23B; Nucleoside diphosphate kinase B; NDK B; NDP kinase B; C-myc purine-binding transcription factor PUF; Histidine protein kinase NDKB; nm23-H2
Gene Symbol	NME2
Entrez Gene	4831; 654364(Human)
SwissProt	P22392(Human)

\*AREX continuously optimizes our products. Webpage content may not reflect the latest updates. For inquiries, please contact [info@arexbio.com](mailto:info@arexbio.com) or your local distributor.

\*Clone Number, Reactivity, Source/Host and Clonality can be found in the product name and Key Features section above.

**DATASHEET****nm23-H2 Rabbit Polyclonal Antibody**

CAT. NO. APA07326

**DATA**

Western blot analysis of nm23-H2 expression in MCF7 (A), HeLa (B), A431 (C), Jurkat (D), K562 (E), BJAB (F) whole cell lysates. (Predicted band size: 17; 30 kD; Observed band size: 17 kD)

**STORAGE**

Store at 4°C short term. For long term storage, store at -20°C, avoiding freeze/thaw cycles.

**NOTE**

For Research Use Only. Not for diagnostic, therapeutics, prophylactic or in vivo use.