

DATASHEET

Nephrocystin 1 Rabbit Polyclonal Antibody

CAT. NO. APA07335

KEY FEATURES

Target	Nephrocystin 1	Source / Host	Rabbit
Reactivity	Human, Mouse, Rat	Clonality	Polyclonal
Applications	WB	Conjugation	Unconjugated
Form / Buffer	Liquid in 0.42% Potassium phosphate, 0.87% Sodium chloride, pH 7.3, 30% glycerol, and 0.01% sodium azide.		Storage at-20°C

BACKGROUND

Together with BCAR1 it may play a role in the control of epithelial cell polarity . Involved in the organization of apical junctions in kidney cells together with NPHP4 and RPGRIP1L/NPHP8 . Does not seem to be strictly required for ciliogenesis . Seems to help to recruit PTK2B/PYK2 to cell matrix adhesions, thereby initiating phosphorylation of PTK2B/PYK2 and PTK2B/PYK2-dependent signaling . May play a role in the regulation of intraflagellar transport (IFT) during cilia assembly. Required for normal retina development . In connecting photoreceptor cilia influences the movement of some IFT proteins such as IFT88 and WDR19. Involved in spermatogenesis .

APPLICATION

To ensure optimal assay performance, AREX recommends conducting reagent titration tailored to each testing system for optimal detection results.

WB	1:500 - 1:1000
----	----------------

*Results are sample-specific. Please refer to your local assay conditions and test parameters for reference.

PRODUCT OVERVIEW

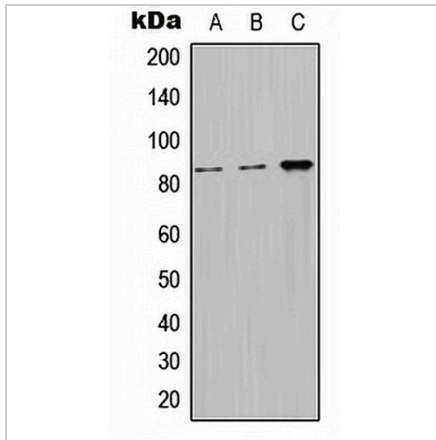
Description	Rabbit polyclonal antibody to Nephrocystin 1
Specificity	Recognizes endogenous levels of Nephrocystin 1 protein.
Antibody Type	Primary antibody
Immunogen	KLH-conjugated synthetic peptide encompassing a sequence within the center region of human Nephrocystin 1. The exact sequence is proprietary.
Purification	The antibody was purified by immunogen affinity chromatography.
Molecular Weight	Predicted: 69; Observed: 83 kD
Form/Buffer	Liquid in 0.42% Potassium phosphate, 0.87% Sodium chloride, pH 7.3, 30% glycerol, and 0.01% sodium azide.
Alternative Names	NPH1; Nephrocystin-1; Juvenile nephronophthisis 1 protein
Gene Symbol	NPHP1
Entrez Gene	4867(Human); 53885(Mouse)
SwissProt	O15259(Human); Q9QY53(Mouse)

*AREX continuously optimizes our products. Webpage content may not reflect the latest updates. For inquiries, please contact info@arexbio.com or your local distributor.

*Clone Number, Reactivity, Source/Host and Clonality can be found in the product name and Key Features section above.

DATASHEET**Nephrocystin 1 Rabbit Polyclonal Antibody**

CAT. NO. APA07335

DATA

Western blot analysis of Nephrocystin 1 expression in HeLa (A), Raw264.7 (B), H9C2 (C) whole cell lysates. (Predicted band size: 69; 77; 83 kD; Observed band size: 83 kD)

STORAGE

Store at 4°C short term. For long term storage, store at -20°C, avoiding freeze/thaw cycles.

NOTE

For Research Use Only. Not for diagnostic, therapeutics, prophylactic or in vivo use.