

**DATASHEET**

**NRL Rabbit Polyclonal Antibody**

CAT. NO. APA07339

**KEY FEATURES**

Target	NRL	Source / Host	Rabbit
Reactivity	Human, Mouse, Rat	Clonality	Polyclonal
Applications	WB	Conjugation	Unconjugated
Form / Buffer	Liquid in 0.42% Potassium phosphate, 0.87% Sodium chloride, pH 7.3, 30% glycerol, and 0.01% sodium azide.		Storage at -20°C

**BACKGROUND**

Acts as a transcriptional activator which regulates the expression of several rod-specific genes, including RHO and PDE6B . Also functions as a transcriptional coactivator, stimulating transcription mediated by the transcription factor CRX and NR2E3 . Binds to the rhodopsin promoter in a sequence-specific manner .

**APPLICATION**

To ensure optimal assay performance, AREX recommends conducting reagent titration tailored to each testing system for optimal detection results.

WB	1:500 - 1:1000
----	----------------

\*Results are sample-specific. Please refer to your local assay conditions and test parameters for reference.

**PRODUCT OVERVIEW**

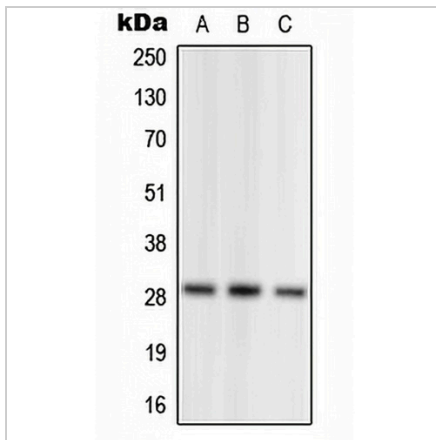
Description	Rabbit polyclonal antibody to NRL
Specificity	Recognizes endogenous levels of NRL protein.
Antibody Type	Primary antibody
Immunogen	KLH-conjugated synthetic peptide encompassing a sequence within the N-term region of human NRL. The exact sequence is proprietary.
Purification	The antibody was purified by immunogen affinity chromatography.
Molecular Weight	Predicted: 25 kD; Observed: 29 kD
Form/Buffer	Liquid in 0.42% Potassium phosphate, 0.87% Sodium chloride, pH 7.3, 30% glycerol, and 0.01% sodium azide.
Alternative Names	D14S46E; Neural retina-specific leucine zipper protein; NRL
Gene Symbol	NRL
Entrez Gene	4901(Human); 18185(Mouse)
SwissProt	P54845(Human); P54846(Mouse)

\*AREX continuously optimizes our products. Webpage content may not reflect the latest updates. For inquiries, please contact [info@arexbio.com](mailto:info@arexbio.com) or your local distributor.

\*Clone Number, Reactivity, Source/Host and Clonality can be found in the product name and Key Features section above.

**DATASHEET****NRL Rabbit Polyclonal Antibody**

CAT. NO. APA07339

**DATA**

Western blot analysis of NRL expression in HEK293T (A), SP2/0 (B), PC12 (C) whole cell lysates. (Predicted band size: 25 kD; Observed band size: 29 kD)

**STORAGE**

Store at 4°C short term. For long term storage, store at -20°C, avoiding freeze/thaw cycles.

**NOTE**

For Research Use Only. Not for diagnostic, therapeutics, prophylactic or in vivo use.