

DATASHEET

NVL Rabbit Polyclonal Antibody

CAT. NO. APA07345

KEY FEATURES

Target	NVL	Source / Host	Rabbit
Reactivity	Human, Mouse, Rat	Clonality	Polyclonal
Applications	WB	Conjugation	Unconjugated
Form / Buffer	Liquid in 0.42% Potassium phosphate, 0.87% Sodium chloride, pH 7.3, 30% glycerol, and 0.01% sodium azide.		Storage at-20°C

BACKGROUND

Participates in the assembly of the telomerase holoenzyme and effecting of telomerase activity via its interaction with TERT . Involved in both early and late stages of the pre-rRNA processing pathways . Spatiotemporally regulates 60S ribosomal subunit biogenesis in the nucleolus . Catalyzes the release of specific assembly factors, such as WDR74, from pre-60S ribosomal particles through the ATPase activity .

APPLICATION

To ensure optimal assay performance, AREX recommends conducting reagent titration tailored to each testing system for optimal detection results.

WB	1:500 - 1:1000
----	----------------

*Results are sample-specific. Please refer to your local assay conditions and test parameters for reference.

PRODUCT OVERVIEW

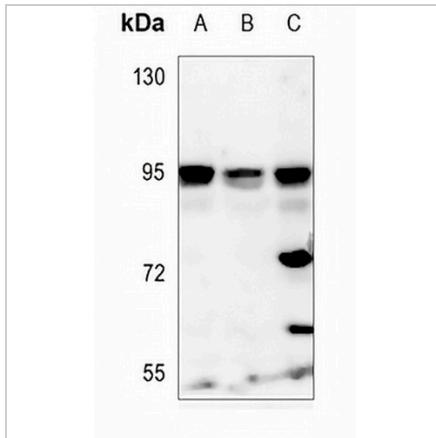
Description	Rabbit polyclonal antibody to NVL
Specificity	Recognizes endogenous levels of NVL protein.
Antibody Type	Primary antibody
Immunogen	KLH-conjugated synthetic peptide encompassing a sequence within the center region of human NVL. The exact sequence is proprietary.
Purification	The antibody was purified by immunogen affinity chromatography.
Molecular Weight	Predicted: 95 kD; Observed: 95 kD
Form/Buffer	Liquid in 0.42% Potassium phosphate, 0.87% Sodium chloride, pH 7.3, 30% glycerol, and 0.01% sodium azide.
Alternative Names	Nuclear valosin-containing protein-like; NVLp; Nuclear VCP-like protein
Gene Symbol	NVL
Entrez Gene	4931(Human); 67459(Mouse)
SwissProt	O15381(Human); Q9DBY8(Mouse)

*AREX continuously optimizes our products. Webpage content may not reflect the latest updates. For inquiries, please contact info@arexbio.com or your local distributor.

*Clone Number, Reactivity, Source/Host and Clonality can be found in the product name and Key Features section above.

DATASHEET**NVL Rabbit Polyclonal Antibody**

CAT. NO. APA07345

DATA

Western blot analysis of NVL expression in mouse kidney (A), rat liver (B), rat kidney (C) whole cell lysates. (Predicted band size: 95 kD; Observed band size: 95 kD)

STORAGE

Store at 4°C short term. For long term storage, store at -20°C, avoiding freeze/thaw cycles.

NOTE

For Research Use Only. Not for diagnostic, therapeutics, prophylactic or in vivo use.