

DATASHEET

Oxytocin Rabbit Polyclonal Antibody

CAT. NO. APA07354

KEY FEATURES

Target	Oxytocin	Source / Host	Rabbit
Reactivity	Human, Monkey	Clonality	Polyclonal
Applications	WB	Conjugation	Unconjugated
Form / Buffer	Liquid in 0.42% Potassium phosphate, 0.87% Sodium chloride, pH 7.3, 30% glycerol, and 0.01% sodium azide.		Storage at -20°C

BACKGROUND

Neurophysin 1 specifically binds oxytocin.; Oxytocin causes contraction of the smooth muscle of the uterus and of the mammary gland. Acts by binding to oxytocin receptor (OXTR).

APPLICATION

To ensure optimal assay performance, AREX recommends conducting reagent titration tailored to each testing system for optimal detection results.

WB	1:500 - 1:1000
----	----------------

*Results are sample-specific. Please refer to your local assay conditions and test parameters for reference.

PRODUCT OVERVIEW

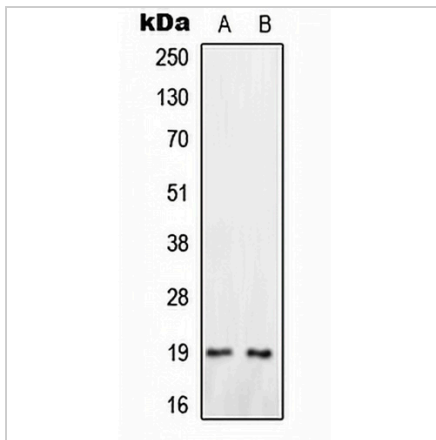
Description	Rabbit polyclonal antibody to Oxytocin
Specificity	Recognizes endogenous levels of Oxytocin protein.
Antibody Type	Primary antibody
Immunogen	KLH-conjugated synthetic peptide encompassing a sequence within the center region of human Oxytocin. The exact sequence is proprietary.
Purification	The antibody was purified by immunogen affinity chromatography.
Molecular Weight	Predicted: 12 kD; Observed: 19 kD
Form/Buffer	Liquid in 0.42% Potassium phosphate, 0.87% Sodium chloride, pH 7.3, 30% glycerol, and 0.01% sodium azide.
Alternative Names	OT; Oxytocin-neurophysin 1; OT-NPI
Gene Symbol	OXT
Entrez Gene	5020(Human)
SwissProt	P01178(Human)

*AREX continuously optimizes our products. Webpage content may not reflect the latest updates. For inquiries, please contact info@arexbio.com or your local distributor.

*Clone Number, Reactivity, Source/Host and Clonality can be found in the product name and Key Features section above.

DATASHEET**Oxytocin Rabbit Polyclonal Antibody**

CAT. NO. APA07354

DATA

Western blot analysis of Oxytocin expression in HeLa (A), HepG2 (B) whole cell lysates. (Predicted band size: 12 kD; Observed band size: 19 kD)

STORAGE

Store at 4°C short term. For long term storage, store at -20°C, avoiding freeze/thaw cycles.

NOTE

For Research Use Only. Not for diagnostic, therapeutics, prophylactic or in vivo use.