

DATASHEET

P2X1 Rabbit Polyclonal Antibody

CAT. NO. APA07355

KEY FEATURES

Target	P2X1	Source / Host	Rabbit
Reactivity	Human, Mouse, Rat, Monkey, Rabbit	Clonality	Polyclonal
Applications	WB, IF/ICC	Conjugation	Unconjugated
Form / Buffer	Liquid in 0.42% Potassium phosphate, 0.87% Sodium chloride, pH 7.3, 30% glycerol, and 0.01% sodium azide.		Storage at -20°C

BACKGROUND

ATP-gated nonselective transmembrane cation channel permeable to potassium, sodium and with relatively high calcium permeability . Furthermore, CTP functions as a weak affinity agonist for P2RX1 . Plays a role a role in urogenital, immune and cardiovascular function . Specifically, plays an important role in neurogenic contraction of smooth muscle of the vas deferens, and therefore is essential for normal male reproductive function . In addition, contributes to smooth muscle contractions of the urinary bladder . On platelets, contributes to platelet activation and aggregation and thereby, also to thrombosis . On neutrophils, it is involved in chemotaxis and in mitigating the activation of circulating cells .

APPLICATION

To ensure optimal assay performance, AREX recommends conducting reagent titration tailored to each testing system for optimal detection results.

WB	1:500 - 1:1000
IF/ICC	1:50 - 1:200

*Results are sample-specific. Please refer to your local assay conditions and test parameters for reference.

PRODUCT OVERVIEW

Description	Rabbit polyclonal antibody to P2X1
Specificity	Recognizes endogenous levels of P2X1 protein.
Antibody Type	Primary antibody
Immunogen	KLH-conjugated synthetic peptide encompassing a sequence within the center region of human P2X1. The exact sequence is proprietary.
Purification	The antibody was purified by immunogen affinity chromatography.
Molecular Weight	Predicted: 44 kD; Observed: 55 kD
Form/Buffer	Liquid in 0.42% Potassium phosphate, 0.87% Sodium chloride, pH 7.3, 30% glycerol, and 0.01% sodium azide.
Alternative Names	P2X1; P2X purinoceptor 1; P2X1; ATP receptor; Purinergic receptor
Gene Symbol	P2RX1
Entrez Gene	5023(Human); 18436(Mouse); 25505(Rat)
SwissProt	P51575(Human); P51576(Mouse); P47824(Rat)

*AREX continuously optimizes our products. Webpage content may not reflect the latest updates. For inquiries, please contact info@arexbio.com or your local distributor.

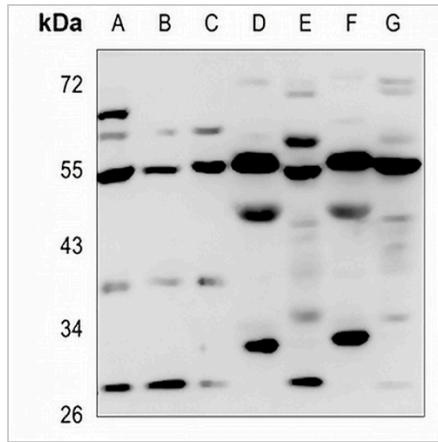
*Clone Number, Reactivity, Source/Host and Clonality can be found in the product name and Key Features section above.

DATASHEET

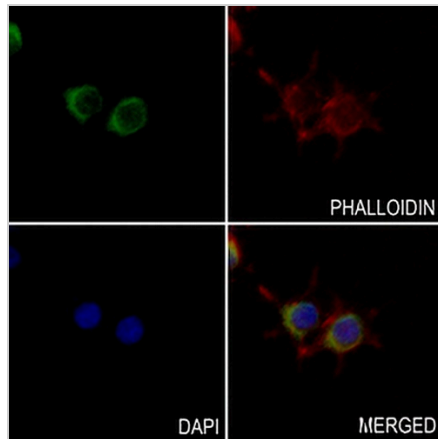
P2X1 Rabbit Polyclonal Antibody

CAT. NO. APA07355

DATA



Western blot analysis of P2X1 expression in HEK293T (A), A549 (B), PC12 (C), mouse muscle (D), mouse spleen (E), rat muscle (F), rat spleen (G) whole cell lysates. (Predicted band size: 44 kD; Observed band size: 55 kD)



Immunofluorescent analysis of P2X1 staining in RAW264.7 cells. Formalin-fixed cells were permeabilized with 0.1% Triton X-100 in TBS for 5-10 minutes and blocked with 3% BSA-PBS for 30 minutes at room temperature. Cells were probed with the primary antibody in 3% BSA-PBS and incubated overnight at 4 °C in a humidified chamber. Cells were washed with PBST and incubated with a AREX® Fluor 488 -conjugated secondary antibody (green) in PBS at room temperature in the dark. Phalloidin - AREX® Fluor 594 was used to stain Actin filaments (red). DAPI was used to stain the cell nuclei (blue).

STORAGE

Store at 4°C short term. For long term storage, store at -20°C, avoiding freeze/thaw cycles.

NOTE

For Research Use Only. Not for diagnostic, therapeutics, prophylactic or in vivo use.