

DATASHEET

PAWR Rabbit Polyclonal Antibody

CAT. NO. APA07363

KEY FEATURES

| | | | |
|---------------|---|---------------|--------------------|
| Target | PAWR | Source / Host | Rabbit |
| Reactivity | Human, Mouse, Rat, Bovine, Chicken, Dog | Clonality | Polyclonal |
| Applications | WB, IHC | Conjugation | Unconjugated |
| Form / Buffer | Liquid in 0.42% Potassium phosphate, 0.87% Sodium chloride, pH 7.3, 30% glycerol, and 0.01% sodium azide. | | Storage at-20°C |

BACKGROUND

Pro-apoptotic protein capable of selectively inducing apoptosis in cancer cells, sensitizing the cells to diverse apoptotic stimuli and causing regression of tumors in animal models. Induces apoptosis in certain cancer cells by activation of the Fas prodeath pathway and coparallel inhibition of NF-kappa-B transcriptional activity. Inhibits the transcriptional activation and augments the transcriptional repression mediated by WT1. Down-regulates the anti-apoptotic protein BCL2 via its interaction with WT1. Also seems to be a transcriptional repressor by itself. May be directly involved in regulating the amyloid precursor protein (APP) cleavage activity of BACE1.

APPLICATION

To ensure optimal assay performance, AREX recommends conducting reagent titration tailored to each testing system for optimal detection results.

| | |
|-----|----------------|
| WB | 1:500 - 1:1000 |
| IHC | 1:100 - 1:200 |

*Results are sample-specific. Please refer to your local assay conditions and test parameters for reference.

PRODUCT OVERVIEW

| | |
|-------------------|---|
| Description | Rabbit polyclonal antibody to PAWR |
| Specificity | Recognizes endogenous levels of PAWR protein. |
| Antibody Type | Primary antibody |
| Immunogen | KLH-conjugated synthetic peptide encompassing a sequence within the C-term region of human PAWR. The exact sequence is proprietary. |
| Purification | The antibody was purified by immunogen affinity chromatography. |
| Molecular Weight | Predicted: 36 kD; Observed: 43 kD |
| Form/Buffer | Liquid in 0.42% Potassium phosphate, 0.87% Sodium chloride, pH 7.3, 30% glycerol, and 0.01% sodium azide. |
| Alternative Names | PAR4; PRKC apoptosis WT1 regulator protein; Prostate apoptosis response 4 protein; Par-4 |
| Gene Symbol | PAWR |
| Entrez Gene | 5074(Human); 114774(Mouse); 64513(Rat) |
| SwissProt | Q96IZ0(Human); Q925B0(Mouse); Q62627(Rat) |

*AREX continuously optimizes our products. Webpage content may not reflect the latest updates. For inquiries, please contact info@arexbio.com or your local distributor.

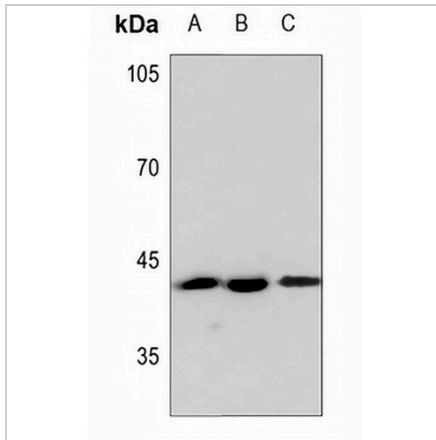
*Clone Number, Reactivity, Source/Host and Clonality can be found in the product name and Key Features section above.

DATASHEET

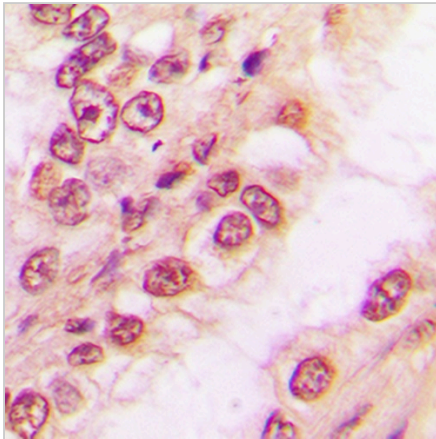
PAWR Rabbit Polyclonal Antibody

CAT. NO. APA07363

DATA



Western blot analysis of PAWR expression in HEK293T (A), A549 (B), U2OS (C) whole cell lysates. (Predicted band size: 36 kD; Observed band size: 43 kD)



Immunohistochemical analysis of PAWR staining in human breast cancer formalin fixed paraffin embedded tissue section. The section was pre-treated using heat mediated antigen retrieval with sodium citrate buffer (pH 6.0). The section was then incubated with the antibody at room temperature and detected using an HRP conjugated compact polymer system. DAB was used as the chromogen. The section was then counterstained with haematoxylin and mounted with DPX.

STORAGE

Store at 4°C short term. For long term storage, store at -20°C, avoiding freeze/thaw cycles.

NOTE

For Research Use Only. Not for diagnostic, therapeutics, prophylactic or in vivo use.