

DATASHEET

DNA Polymerase epsilon 2 Rabbit Polyclonal Antibody

CAT. NO. APA07412

KEY FEATURES

Target	DNA Polymerase epsilon 2	Source / Host	Rabbit
Reactivity	Human, Mouse, Rat	Clonality	Polyclonal
Applications	WB	Conjugation	Unconjugated
Form / Buffer	Liquid in 0.42% Potassium phosphate, 0.87% Sodium chloride, pH 7.3, 30% glycerol, and 0.01% sodium azide.		Storage at -20°C

BACKGROUND

Accessory component of the DNA polymerase epsilon complex . Participates in DNA repair and in chromosomal DNA replication .

APPLICATION

To ensure optimal assay performance, AREX recommends conducting reagent titration tailored to each testing system for optimal detection results.

WB	1:500 - 1:1000
----	----------------

*Results are sample-specific. Please refer to your local assay conditions and test parameters for reference.

PRODUCT OVERVIEW

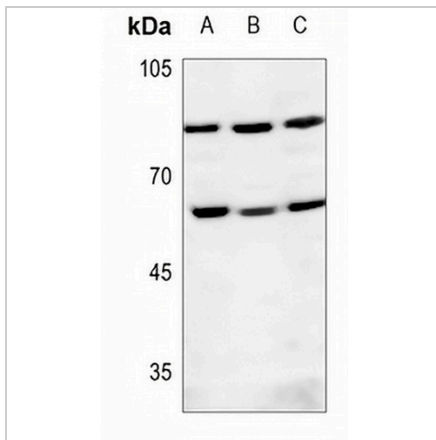
Description	Rabbit polyclonal antibody to DNA Polymerase epsilon 2
Specificity	Recognizes endogenous levels of DNA Polymerase epsilon 2 protein.
Antibody Type	Primary antibody
Immunogen	KLH-conjugated synthetic peptide encompassing a sequence within the center region of human DNA Polymerase epsilon 2. The exact sequence is proprietary.
Purification	The antibody was purified by immunogen affinity chromatography.
Molecular Weight	Predicted: 59 kD; Observed: 60 kD
Form/Buffer	Liquid in 0.42% Potassium phosphate, 0.87% Sodium chloride, pH 7.3, 30% glycerol, and 0.01% sodium azide.
Alternative Names	DPE2; DNA polymerase epsilon subunit 2; DNA polymerase II subunit 2; DNA polymerase epsilon subunit B
Gene Symbol	POLE2
Entrez Gene	5427(Human); 18974(Mouse)
SwissProt	P56282(Human); O54956(Mouse)

*AREX continuously optimizes our products. Webpage content may not reflect the latest updates. For inquiries, please contact info@arexbio.com or your local distributor.

*Clone Number, Reactivity, Source/Host and Clonality can be found in the product name and Key Features section above.

DATASHEET**DNA Polymerase epsilon 2 Rabbit Polyclonal Antibody**

CAT. NO. APA07412

DATA

Western blot analysis of DNA Polymerase epsilon 2 expression in mouse testis (A), rat lung (B), rat testis (C) whole cell lysates. (Predicted band size: 59 kD; Observed band size: 60 kD)

STORAGE

Store at 4°C short term. For long term storage, store at -20°C, avoiding freeze/thaw cycles.

NOTE

For Research Use Only. Not for diagnostic, therapeutics, prophylactic or in vivo use.