

**DATASHEET**

**PPP1R7 Rabbit Polyclonal Antibody**

CAT. NO. APA07422

**KEY FEATURES**

Target	PPP1R7	Source / Host	Rabbit
Reactivity	Human, Mouse, Rat, Monkey	Clonality	Polyclonal
Applications	WB	Conjugation	Unconjugated
Form / Buffer	Liquid in 0.42% Potassium phosphate, 0.87% Sodium chloride, pH 7.3, 30% glycerol, and 0.01% sodium azide.		Storage at -20°C

**BACKGROUND**

Regulatory subunit of protein phosphatase 1.

**APPLICATION**

To ensure optimal assay performance, AREX recommends conducting reagent titration tailored to each testing system for optimal detection results.

WB	1:500 - 1:1000
----	----------------

\*Results are sample-specific. Please refer to your local assay conditions and test parameters for reference.

**PRODUCT OVERVIEW**

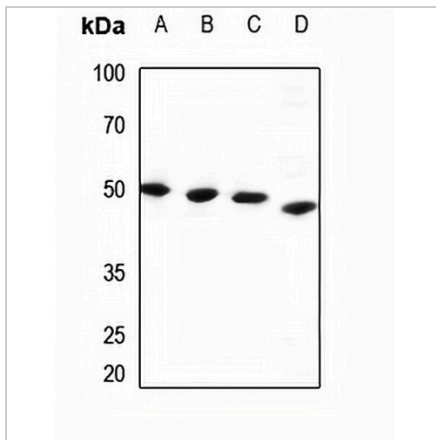
Description	Rabbit polyclonal antibody to PPP1R7
Specificity	Recognizes endogenous levels of PPP1R7 protein.
Antibody Type	Primary antibody
Immunogen	KLH-conjugated synthetic peptide encompassing a sequence within the center region of human PPP1R7. The exact sequence is proprietary.
Purification	The antibody was purified by immunogen affinity chromatography.
Molecular Weight	Predicted: 41 kD; Observed: 48 kD
Form/Buffer	Liquid in 0.42% Potassium phosphate, 0.87% Sodium chloride, pH 7.3, 30% glycerol, and 0.01% sodium azide.
Alternative Names	SDS22; Protein phosphatase 1 regulatory subunit 7; Protein phosphatase 1 regulatory subunit 22
Gene Symbol	PPP1R7
Entrez Gene	5510(Human); 66385(Mouse); 301618(Rat)
SwissProt	Q15435(Human); Q3UM45(Mouse); Q5HZV9(Rat)

\*AREX continuously optimizes our products. Webpage content may not reflect the latest updates. For inquiries, please contact [info@arexbio.com](mailto:info@arexbio.com) or your local distributor.

\*Clone Number, Reactivity, Source/Host and Clonality can be found in the product name and Key Features section above.

**DATASHEET****PPP1R7 Rabbit Polyclonal Antibody**

CAT. NO. APA07422

**DATA**

Western blot analysis of PPP1R7 expression in HEK293T (A), HeLa (B), HGC27 (C), rat liver (D) whole cell lysates. (Predicted band size: 41 kD; Observed band size: 48 kD)

**STORAGE**

Store at 4°C short term. For long term storage, store at -20°C, avoiding freeze/thaw cycles.

**NOTE**

For Research Use Only. Not for diagnostic, therapeutics, prophylactic or in vivo use.