

DATASHEET

ARD1 Rabbit Polyclonal Antibody

CAT. NO. APA07423

KEY FEATURES

Target	ARD1	Source / Host	Rabbit
Reactivity	Human, Mouse, Rat, Bovine	Clonality	Polyclonal
Applications	WB, IF/ICC	Conjugation	Unconjugated
Form / Buffer	Liquid in 0.42% Potassium phosphate, 0.87% Sodium chloride, pH 7.3, 30% glycerol, and 0.01% sodium azide.		Storage at -20°C

BACKGROUND

Inhibitor subunit of the major nuclear protein phosphatase-1 (PP-1). It has RNA-binding activity but does not cleave RNA and may target PP-1 to RNA-associated substrates. May also be involved in pre-mRNA splicing. Binds DNA and might act as a transcriptional repressor. Seems to be required for cell proliferation.; Isoform Gamma is a site-specific single-strand endoribonuclease that cleaves single strand RNA 3' to purines and pyrimidines in A+U-rich regions. It generates 5'-phosphate termini at the site of cleavage. This isoform does not inhibit PP-1. May be implicated in mRNA splicing.

APPLICATION

To ensure optimal assay performance, AREX recommends conducting reagent titration tailored to each testing system for optimal detection results.

WB	1:500 - 1:1000
IF/ICC	1:50 - 1:200

*Results are sample-specific. Please refer to your local assay conditions and test parameters for reference.

PRODUCT OVERVIEW

Description	Rabbit polyclonal antibody to ARD1
Specificity	Recognizes endogenous levels of ARD1 protein.
Antibody Type	Primary antibody
Immunogen	KLH-conjugated synthetic peptide encompassing a sequence within the center region of human ARD1. The exact sequence is proprietary.
Purification	The antibody was purified by immunogen affinity chromatography.
Molecular Weight	Predicted: 38 kD; Observed: 41 kD
Form/Buffer	Liquid in 0.42% Potassium phosphate, 0.87% Sodium chloride, pH 7.3, 30% glycerol, and 0.01% sodium azide.
Alternative Names	ARD1; NIPP1; Nuclear inhibitor of protein phosphatase 1; NIPP-1; Protein phosphatase 1 regulatory inhibitor subunit 8
Gene Symbol	PPP1R8
Entrez Gene	5511(Human); 100336(Mouse)
SwissProt	Q12972(Human); Q8R3G1(Mouse)

*AREX continuously optimizes our products. Webpage content may not reflect the latest updates. For inquiries, please contact info@arexbio.com or your local distributor.

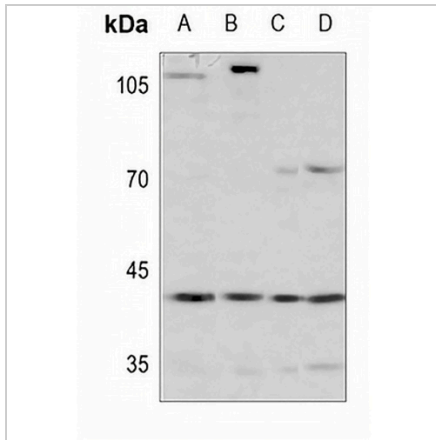
*Clone Number, Reactivity, Source/Host and Clonality can be found in the product name and Key Features section above.

DATASHEET

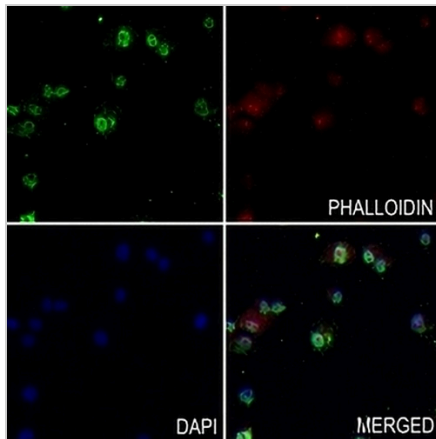
ARD1 Rabbit Polyclonal Antibody

CAT. NO. APA07423

DATA



Western blot analysis of ARD1 expression in HEK293T (A), MCF7 (B), mouse testis (C), rat testis (D) whole cell lysates. (Predicted band size: 38 kD; Observed band size: 41 kD)



Immunofluorescent analysis of ARD1 staining in PANC1 cells. Formalin-fixed cells were permeabilized with 0.1% Triton X-100 in TBS for 5-10 minutes and blocked with 3% BSA-PBS for 30 minutes at room temperature. Cells were probed with the primary antibody in 3% BSA-PBS and incubated overnight at 4 °C in a humidified chamber. Cells were washed with PBST and incubated with a AREX® Fluor 488 -conjugated secondary antibody (green) in PBS at room temperature in the dark. Phalloidin - AREX® Fluor 594 was used to stain Actin filaments (red). DAPI was used to stain the cell nuclei (blue).

STORAGE

Store at 4°C short term. For long term storage, store at -20°C, avoiding freeze/thaw cycles.

NOTE

For Research Use Only. Not for diagnostic, therapeutics, prophylactic or in vivo use.