

DATASHEET

PKC zeta (Phospho-T560) Rabbit Polyclonal Antibody

CAT. NO. APA07441

KEY FEATURES

Target	PKC zeta (Phospho-T560)	Source / Host	Rabbit
Reactivity	Human, Mouse, Rat, Rabbit, Zebrafish	Clonality	Polyclonal
Applications	WB, IHC	Conjugation	Unconjugated
Form / Buffer	Liquid in 0.42% Potassium phosphate, 0.87% Sodium chloride, pH 7.3, 30% glycerol, and 0.01% sodium azide.		Storage at -20°C

BACKGROUND

Calcium- and diacylglycerol-independent serine/threonine-protein kinase that functions in phosphatidylinositol 3-kinase (PI3K) pathway and mitogen-activated protein (MAP) kinase cascade, and is involved in NF-kappa-B activation, mitogenic signaling, cell proliferation, cell polarity, inflammatory response and maintenance of long-term potentiation (LTP). Upon lipopolysaccharide (LPS) treatment in macrophages, or following mitogenic stimuli, functions downstream of PI3K to activate MAP2K1/MEK1-MAPK1/ERK2 signaling cascade independently of RAF1 activation. Required for insulin-dependent activation of AKT3, but may function as an adapter rather than a direct activator.

APPLICATION

To ensure optimal assay performance, AREX recommends conducting reagent titration tailored to each testing system for optimal detection results.

WB	1:500 - 1:1000
IHC	1:50 - 1:100

*Results are sample-specific. Please refer to your local assay conditions and test parameters for reference.

PRODUCT OVERVIEW

Description	Rabbit polyclonal antibody to PKC zeta (Phospho-T560)
Specificity	Recognizes endogenous levels of PKC zeta protein only when phosphorylated at T560.
Antibody Type	Primary antibody
Immunogen	KLH-conjugated synthetic phosphopeptide corresponding to residues surrounding T560 of human PKC zeta protein. The exact sequence is proprietary.
Purification	The antibody was purified by immunogen affinity chromatography.
Molecular Weight	Predicted: 67 kD; Observed: 78 kD
Form/Buffer	Liquid in 0.42% Potassium phosphate, 0.87% Sodium chloride, pH 7.3, 30% glycerol, and 0.01% sodium azide.
Alternative Names	PKC2; Protein kinase C zeta type; nPKC-zeta
Gene Symbol	PRKCZ
Entrez Gene	5590(Human); 18762(Mouse); 25522(Rat)
SwissProt	Q05513(Human); Q02956(Mouse); P09217(Rat)

*AREX continuously optimizes our products. Webpage content may not reflect the latest updates. For inquiries, please contact info@arexbio.com or your local distributor.

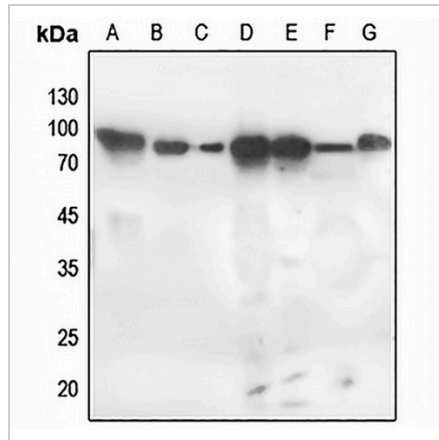
*Clone Number, Reactivity, Source/Host and Clonality can be found in the product name and Key Features section above.

DATASHEET

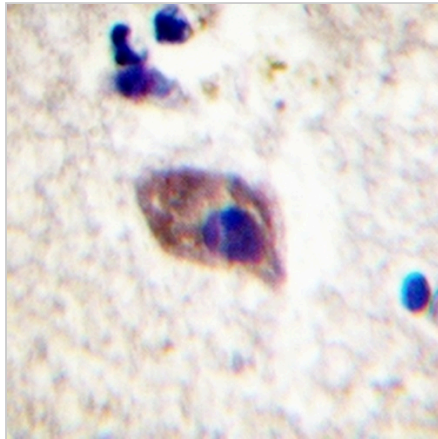
PKC zeta (Phospho-T560) Rabbit Polyclonal Antibody

CAT. NO. APA07441

DATA



Western blot analysis of PKC zeta (Phospho-T560) expression in HEK293T (A), HeLa (B), H446 (C), mouse kidney (D), mouse testis (E), rat kidney (F), rat testis (G) whole cell lysates. (Predicted band size: 67 kD; Observed band size: 78 kD)



Immunohistochemical analysis of PKC zeta (Phospho-T560) staining in human brain formalin fixed paraffin embedded tissue section. The section was pre-treated using heat mediated antigen retrieval with sodium citrate buffer (pH 6.0). The section was then incubated with the antibody at room temperature and detected using an HRP conjugated compact polymer system. DAB was used as the chromogen. The section was then counterstained with haematoxylin and mounted with DPX.

STORAGE

Store at 4°C short term. For long term storage, store at -20°C, avoiding freeze/thaw cycles.

NOTE

For Research Use Only. Not for diagnostic, therapeutics, prophylactic or in vivo use.