

DATASHEET

JNK1/2/3 (Phospho-T183) Rabbit Polyclonal Antibody

CAT. NO. APA07447

KEY FEATURES

Target	JNK1/2/3 (Phospho-T183)	Source / Host	Rabbit
Reactivity	Human, Mouse, Rat, Bovine, Chicken, Pig	Clonality	Polyclonal
Applications	WB, IHC, IF/ICC	Conjugation	Unconjugated
Form / Buffer	Liquid in 0.42% Potassium phosphate, 0.87% Sodium chloride, pH 7.3, 30% glycerol, and 0.01% sodium azide.	Storage	at-20°C

BACKGROUND

Serine/threonine-protein kinase involved in various processes such as cell proliferation, differentiation, migration, transformation and programmed cell death. Extracellular stimuli such as pro-inflammatory cytokines or physical stress stimulate the stress-activated protein kinase/c-Jun N-terminal kinase (SAP/JNK) signaling pathway. In this cascade, two dual specificity kinases MAP2K4/MKK4 and MAP2K7/MKK7 phosphorylate and activate MAPK8/JNK1. In turn, MAPK8/JNK1 phosphorylates a number of transcription factors, primarily components of AP-1 such as JUN, JDP2 and ATF2 and thus regulates AP-1 transcriptional activity. Phosphorylates the replication licensing factor CDT1, inhibiting the interaction between CDT1 and the histone H4 acetylase HBO1 to replication origins.

APPLICATION

To ensure optimal assay performance, AREX recommends conducting reagent titration tailored to each testing system for optimal detection results.

WB	1:500 - 1:1000
IHC	1:100 - 1:200
IF/ICC	1:100 - 1:500

*Results are sample-specific. Please refer to your local assay conditions and test parameters for reference.

PRODUCT OVERVIEW

Description	Rabbit polyclonal antibody to JNK1/2/3 (Phospho-T183)
Specificity	Recognizes endogenous levels of JNK1/2/3 protein only when phosphorylated at T183.
Antibody Type	Primary antibody
Immunogen	KLH-conjugated synthetic phosphopeptide corresponding to residues surrounding T183 of human JNK1/2/3 protein. The exact sequence is proprietary.
Purification	The antibody was purified by immunogen affinity chromatography.
Molecular Weight	Predicted: 48; Observed: 46; 54 kD
Form/Buffer	Liquid in 0.42% Potassium phosphate, 0.87% Sodium chloride, pH 7.3, 30% glycerol, and 0.01% sodium azide.
Alternative Names	MAPK8; JNK1; PRKM8; SAPK1; SAPK1C; Mitogen-activated protein kinase 8; MAP kinase 8; JNK-46; Stress-activated protein kinase 1c; SAPK1c; Stress-activated protein kinase JNK1; c-Jun N-terminal kinase 1; MAPK9; JNK2; PRKM9; SAPK1A; Mitogen-activated protein kinase 9; MAP kinase 9; JNK-55; Stress-activated protein kinase 1a; SAPK1a; Stress-activated protein kinase JNK2; c-Jun N-terminal kinase 2; MAPK10; JNK3; JNK3A; PRKM10; SAPK1B; Mitogen-activated protein kinase 10; MAP kinase 10; MAP kinase p49 3F12; Stress-activated protein kinase 1b; SAPK1b; Stress-activated protein kinase JNK3; c-Jun N-terminal kinase 3
Gene Symbol	MAPK8; MAPK9; MAPK10
Entrez Gene	5599; 5601; 5602(Human); 26419; 26420(Mouse); 116554; 50658; 25272(Rat)

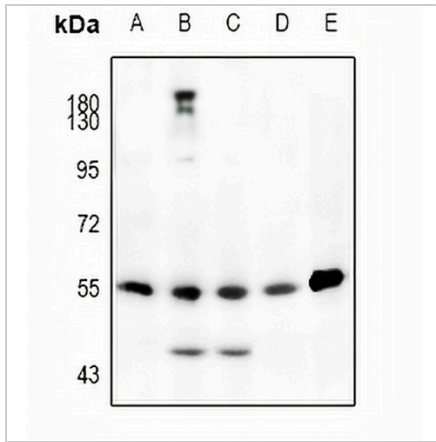
SwissProt P45983; P45984; P53779(Human); O91Y86; O9WTU6; O61831(Mouse); P49185; P49186; P49187(Rat) | **1**

DATASHEET

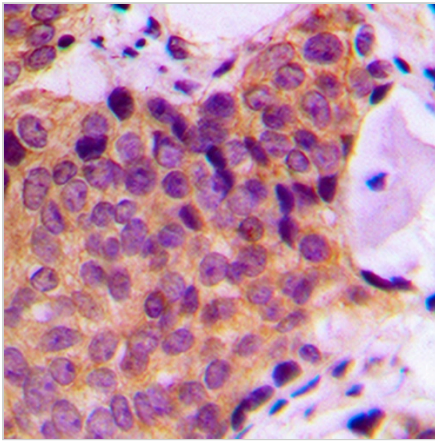
JNK1/2/3 (Phospho-T183) Rabbit Polyclonal Antibody

CAT. NO. APA07447

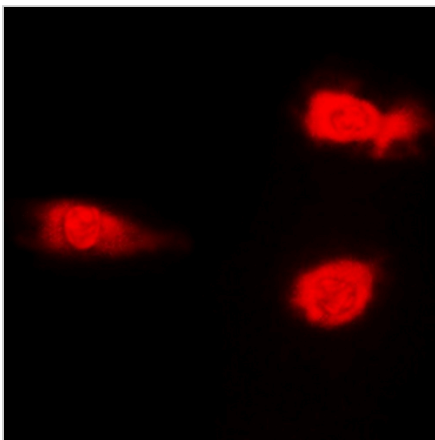
DATA



Western blot analysis of JNK1/2/3 (Phospho-T183) expression in HCT116 (A), MCF7 (B), A549 (C), rat brain (D), C6 (E) whole cell lysates. (Predicted band size: 48; 48; 52 kD; Observed band size: 46; 54 kD)



Immunohistochemical analysis of JNK1/2/3 (Phospho-T183) staining in human breast cancer formalin fixed paraffin embedded tissue section. The section was pre-treated using heat mediated antigen retrieval with sodium citrate buffer (pH 6.0). The section was then incubated with the antibody at room temperature and detected using an HRP conjugated compact polymer system. DAB was used as the chromogen. The section was then counterstained with haematoxylin and mounted with DPX.



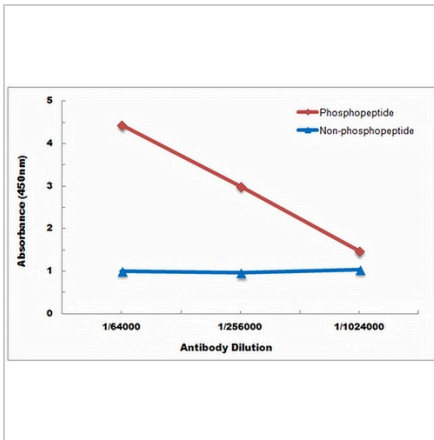
Immunofluorescent analysis of JNK1/2/3 (Phospho-T183) staining in NIH3T3 cells. Formalin-fixed cells were permeabilized with 0.1% Triton X-100 in TBS for 5-10 minutes and blocked with 3% BSA-PBS for 30 minutes at room temperature. Cells were probed with the primary antibody in 3% BSA-PBS and incubated overnight at 4 °C in a humidified chamber. Cells were washed with PBST and incubated with a DyLight 594-conjugated secondary antibody (red) in PBS at room temperature in the dark.

DATASHEET

JNK1/2/3 (Phospho-T183) Rabbit Polyclonal Antibody

CAT. NO. APA07447

DATA (CONTINUED)



Direct ELISA antibody dose-response curve using Anti-JNK1/2/3 (Phospho-T183) Antibody. Antigen (Phosphopeptide and non-phosphopeptide) concentration is 5 ug/ml. Goat Anti-Rabbit IgG (H&L) - HRP was used as the secondary antibody, and signal was developed by TMB substrate.

STORAGE

Store at 4°C short term. For long term storage, store at -20°C, avoiding freeze/thaw cycles.

NOTE

For Research Use Only. Not for diagnostic, therapeutics, prophylactic or in vivo use.