

**DATASHEET**

**Patched Rabbit Polyclonal Antibody**

CAT. NO. APA07464

**KEY FEATURES**

|               |   |               |                     |
|---------------|---|---------------|---------------------|
| Target        | Patched   | Source / Host | Rabbit              |
| Reactivity    | Human, Mouse, Rat   | Clonality     | Polyclonal          |
| Applications  | WB, IHC   | Conjugation   | Unconjugated        |
| Form / Buffer | Liquid in 0.42% Potassium phosphate, 0.87% Sodium chloride, pH 7.3, 30% glycerol, and 0.01% sodium azide. |               | Storage<br>at -20°C |

**BACKGROUND**

Acts as a receptor for sonic hedgehog (SHH), indian hedgehog (IHH) and desert hedgehog (DHH). Associates with the smoothed protein (SMO) to transduce the hedgehog's proteins signal. Seems to have a tumor suppressor function, as inactivation of this protein is probably a necessary, if not sufficient step for tumorigenesis.

**APPLICATION**

To ensure optimal assay performance, AREX recommends conducting reagent titration tailored to each testing system for optimal detection results.

|     |                |
|-----|----------------|
| WB  | 1:500 - 1:1000 |
| IHC | 1:50 - 1:100   |

\*Results are sample-specific. Please refer to your local assay conditions and test parameters for reference.

**PRODUCT OVERVIEW**

|                   |  |
|-------------------|--|
| Description       | Rabbit polyclonal antibody to Patched  |
| Specificity       | Recognizes endogenous levels of Patched protein.   |
| Antibody Type     | Primary antibody   |
| Immunogen         | KLH-conjugated synthetic peptide encompassing a sequence within the N-term region of human Patched. The exact sequence is proprietary. |
| Purification      | The antibody was purified by immunogen affinity chromatography.  |
| Molecular Weight  | Predicted: 160 kD; Observed: 160 kD  |
| Form/Buffer       | Liquid in 0.42% Potassium phosphate, 0.87% Sodium chloride, pH 7.3, 30% glycerol, and 0.01% sodium azide.                              |
| Alternative Names | PTCH; Protein patched homolog 1; PTC; PTC1   |
| Gene Symbol       | PTCH1  |
| Entrez Gene       | 5727(Human); 19206(Mouse)  |
| SwissProt         | Q13635(Human); Q61115(Mouse)   |

\*AREX continuously optimizes our products. Webpage content may not reflect the latest updates. For inquiries, please contact [info@arexbio.com](mailto:info@arexbio.com) or your local distributor.

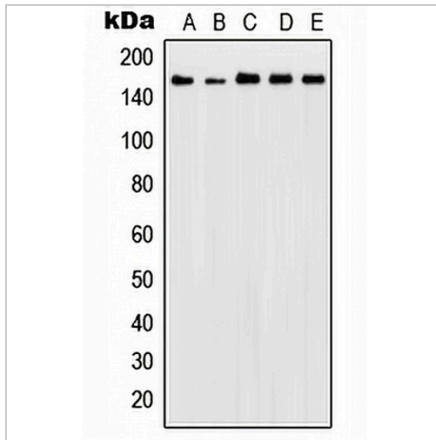
\*Clone Number, Reactivity, Source/Host and Clonality can be found in the product name and Key Features section above.

**DATASHEET**

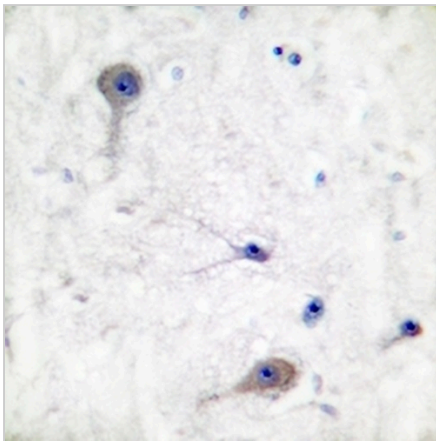
**Patched Rabbit Polyclonal Antibody**

CAT. NO. APA07464

**DATA**



Western blot analysis of Patched expression in HeLa (A), Ramos (B), MCF7 (C), NIH3T3 (D), PC12 (E) whole cell lysates. (Predicted band size: 160 kD; Observed band size: 160 kD)



Immunohistochemical analysis of Patched staining in human brain formalin fixed paraffin embedded tissue section. The section was pre-treated using heat mediated antigen retrieval with sodium citrate buffer (pH 6.0). The section was then incubated with the antibody at room temperature and detected using an HRP conjugated compact polymer system. DAB was used as the chromogen. The section was then counterstained with haematoxylin and mounted with DPX.

**STORAGE**

Store at 4°C short term. For long term storage, store at -20°C, avoiding freeze/thaw cycles.

**NOTE**

For Research Use Only. Not for diagnostic, therapeutics, prophylactic or in vivo use.