

**DATASHEET**
**ABCD3 Rabbit Polyclonal Antibody**
**CAT. NO. APA07476**
**KEY FEATURES**

Target	ABCD3	Source / Host	Rabbit
Reactivity	Human, Mouse, Rat, Bovine	Clonality	Polyclonal
Applications	WB, IF/ICC	Conjugation	Unconjugated
Form / Buffer	Liquid in 0.42% Potassium phosphate, 0.87% Sodium chloride, pH 7.3, 30% glycerol, and 0.01% sodium azide.		Storage at-20°C

**BACKGROUND**

Broad substrate specificity ATP-dependent transporter of the ATP-binding cassette (ABC) family that catalyzes the transport of long-chain fatty acids (LCFA)-CoA, dicarboxylic acids-CoA, long-branched-chain fatty acids-CoA and bile acids from the cytosol to the peroxisome lumen for beta-oxidation family that catalyzes the transport of long-chain fatty acids (LCFA)-CoA, dicarboxylic acids-CoA, long-branched-chain fatty acids-CoA and bile acids from the cytosol to the peroxisome lumen for beta-oxidation . Has fatty acyl-CoA thioesterase and ATPase activities . Probably hydrolyzes fatty acyl-CoAs into free fatty acids prior to their ATP-dependent transport into peroxisomes .

**APPLICATION**

To ensure optimal assay performance, AREX recommends conducting reagent titration tailored to each testing system for optimal detection results.

WB	1:500 - 1:1000
IF/ICC	1:50 - 1:200

\*Results are sample-specific. Please refer to your local assay conditions and test parameters for reference.

**PRODUCT OVERVIEW**

Description	Rabbit polyclonal antibody to ABCD3
Specificity	Recognizes endogenous levels of ABCD3 protein.
Antibody Type	Primary antibody
Immunogen	KLH-conjugated synthetic peptide encompassing a sequence within the N-term region of human ABCD3. The exact sequence is proprietary.
Purification	The antibody was purified by immunogen affinity chromatography.
Molecular Weight	Predicted: 75 kD; Observed: 75 kD
Form/Buffer	Liquid in 0.42% Potassium phosphate, 0.87% Sodium chloride, pH 7.3, 30% glycerol, and 0.01% sodium azide.
Alternative Names	PMP70; PXMP1; ATP-binding cassette sub-family D member 3; 70 kDa peroxisomal membrane protein; PMP70
Gene Symbol	ABCD3
Entrez Gene	5825(Human); 19299(Mouse); 25270(Rat)
SwissProt	P28288(Human); P55096(Mouse); P16970(Rat)

\*AREX continuously optimizes our products. Webpage content may not reflect the latest updates. For inquiries, please contact [info@arexbio.com](mailto:info@arexbio.com) or your local distributor.

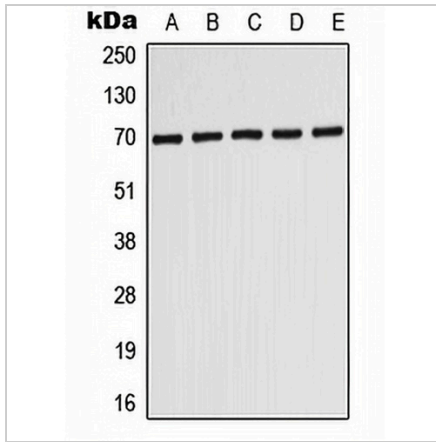
\*Clone Number, Reactivity, Source/Host and Clonality can be found in the product name and Key Features section above.

**DATASHEET**

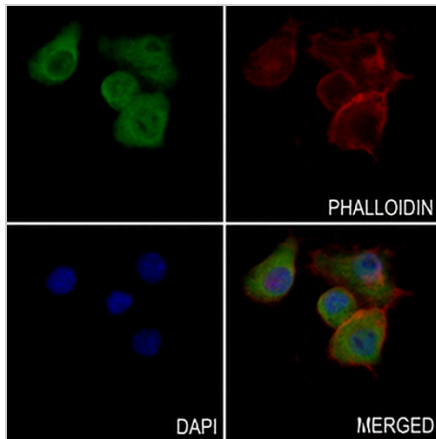
**ABCD3 Rabbit Polyclonal Antibody**

CAT. NO. APA07476

**DATA**



Western blot analysis of ABCD3 expression in HepG2 (A), MCF7 (B), SHSY5Y (C), SP2/0 (D), PC12 (E) whole cell lysates. (Predicted band size: 75 kD; Observed band size: 75 kD)



Immunofluorescent analysis of ABCD3 staining in RAW264.7 cells. Formalin-fixed cells were permeabilized with 0.1% Triton X-100 in TBS for 5-10 minutes and blocked with 3% BSA-PBS for 30 minutes at room temperature. Cells were probed with the primary antibody in 3% BSA-PBS and incubated overnight at 4 °C in a humidified chamber. Cells were washed with PBST and incubated with a AREX® Fluor 488 -conjugated secondary antibody (green) in PBS at room temperature in the dark. Phalloidin - AREX® Fluor 594 was used to stain Actin filaments (red). DAPI was used to stain the cell nuclei (blue).

**STORAGE**

Store at 4°C short term. For long term storage, store at -20°C, avoiding freeze/thaw cycles.

**NOTE**

For Research Use Only. Not for diagnostic, therapeutics, prophylactic or in vivo use.