

DATASHEET

RFC2 Rabbit Polyclonal Antibody

CAT. NO. APA07497

KEY FEATURES

| | | | |
|---------------|---|---------------|---------------------|
| Target | RFC2 | Source / Host | Rabbit |
| Reactivity | Human, Mouse | Clonality | Polyclonal |
| Applications | WB | Conjugation | Unconjugated |
| Form / Buffer | Liquid in 0.42% Potassium phosphate, 0.87% Sodium chloride, pH 7.3, 30% glycerol, and 0.01% sodium azide. | | Storage at -20°C |

BACKGROUND

Subunit of the replication factor C (RFC) complex which acts during elongation of primed DNA templates by DNA polymerases delta and epsilon, and is necessary for ATP-dependent loading of proliferating cell nuclear antigen (PCNA) onto primed DNA complex which acts during elongation of primed DNA templates by DNA polymerases delta and epsilon, and is necessary for ATP-dependent loading of proliferating cell nuclear antigen (PCNA) onto primed DNA . This subunit binds ATP .

APPLICATION

To ensure optimal assay performance, AREX recommends conducting reagent titration tailored to each testing system for optimal detection results.

| | |
|----|----------------|
| WB | 1:500 - 1:1000 |
|----|----------------|

*Results are sample-specific. Please refer to your local assay conditions and test parameters for reference.

PRODUCT OVERVIEW

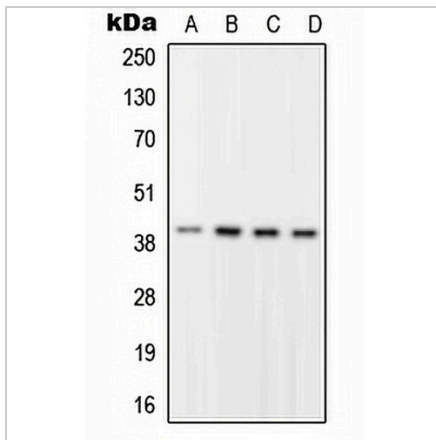
| | |
|-------------------|---|
| Description | Rabbit polyclonal antibody to RFC2 |
| Specificity | Recognizes endogenous levels of RFC2 protein. |
| Antibody Type | Primary antibody |
| Immunogen | KLH-conjugated synthetic peptide encompassing a sequence within the center region of human RFC2. The exact sequence is proprietary. |
| Purification | The antibody was purified by immunogen affinity chromatography. |
| Molecular Weight | Predicted: 35; Observed: 39 kD |
| Form/Buffer | Liquid in 0.42% Potassium phosphate, 0.87% Sodium chloride, pH 7.3, 30% glycerol, and 0.01% sodium azide. |
| Alternative Names | Replication factor C subunit 2; Activator 1 40 kDa subunit; A1 40 kDa subunit; Activator 1 subunit 2; Replication factor C 40 kDa subunit; RF-C 40 kDa subunit; RFC40 |
| Gene Symbol | RFC2 |
| Entrez Gene | 5982(Human); 19718(Mouse) |
| SwissProt | P35250(Human); Q9WUK4(Mouse) |

*AREX continuously optimizes our products. Webpage content may not reflect the latest updates. For inquiries, please contact info@arexbio.com or your local distributor.

*Clone Number, Reactivity, Source/Host and Clonality can be found in the product name and Key Features section above.

DATASHEET**RFC2 Rabbit Polyclonal Antibody**

CAT. NO. APA07497

DATA

Western blot analysis of RFC2 expression in HEK293T (A), HeLa (B), Raw264.7 (C), H9C2 (D) whole cell lysates. (Predicted band size: 35; 39 kD; Observed band size: 39 kD)

STORAGE

Store at 4°C short term. For long term storage, store at -20°C, avoiding freeze/thaw cycles.

NOTE

For Research Use Only. Not for diagnostic, therapeutics, prophylactic or in vivo use.