

DATASHEET

RPL10 Rabbit Polyclonal Antibody

CAT. NO. APA07507

KEY FEATURES

Target	RPL10	Source / Host	Rabbit
Reactivity	Human, Mouse, Rat, Bovine, Monkey, Pig, Sheep	Clonality	Polyclonal
Applications	WB	Conjugation	Unconjugated
Form / Buffer	Liquid in 0.42% Potassium phosphate, 0.87% Sodium chloride, pH 7.3, 30% glycerol, and 0.01% sodium azide.		Storage at -20°C

BACKGROUND

Component of the large ribosomal subunit . Plays a role in the formation of actively translating ribosomes . May play a role in the embryonic brain development .

APPLICATION

To ensure optimal assay performance, AREX recommends conducting reagent titration tailored to each testing system for optimal detection results.

WB	1:500 - 1:1000
----	----------------

*Results are sample-specific. Please refer to your local assay conditions and test parameters for reference.

PRODUCT OVERVIEW

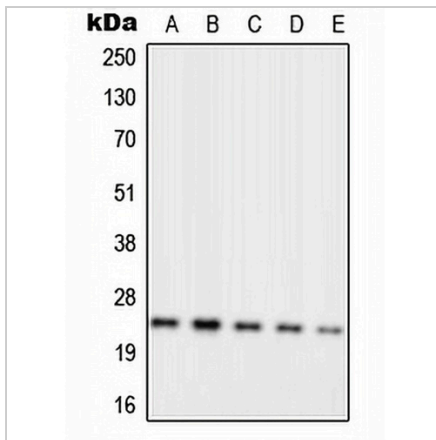
Description	Rabbit polyclonal antibody to RPL10
Specificity	Recognizes endogenous levels of RPL10 protein.
Antibody Type	Primary antibody
Immunogen	KLH-conjugated synthetic peptide encompassing a sequence within the center region of human RPL10. The exact sequence is proprietary.
Purification	The antibody was purified by immunogen affinity chromatography.
Molecular Weight	Predicted: 24 kD; Observed: 25 kD
Form/Buffer	Liquid in 0.42% Potassium phosphate, 0.87% Sodium chloride, pH 7.3, 30% glycerol, and 0.01% sodium azide.
Alternative Names	DXS648E; QM; 60S ribosomal protein L10; Laminin receptor homolog; Protein QM; Tumor suppressor QM
Gene Symbol	RPL10
Entrez Gene	6134(Human); 110954(Mouse); 81764(Rat)
SwissProt	P27635(Human); Q6ZWW3(Mouse); Q6PDV7(Rat)

*AREX continuously optimizes our products. Webpage content may not reflect the latest updates. For inquiries, please contact info@arexbio.com or your local distributor.

*Clone Number, Reactivity, Source/Host and Clonality can be found in the product name and Key Features section above.

DATASHEET**RPL10 Rabbit Polyclonal Antibody**

CAT. NO. APA07507

DATA

Western blot analysis of RPL10 expression in MCF7 (A), Jurkat (B), K562 (C), Raw264.7 (D), PC12 (E) whole cell lysates. (Predicted band size: 24 kD; Observed band size: 25 kD)

STORAGE

Store at 4°C short term. For long term storage, store at -20°C, avoiding freeze/thaw cycles.

NOTE

For Research Use Only. Not for diagnostic, therapeutics, prophylactic or in vivo use.