

DATASHEET

CLIP1 Rabbit Polyclonal Antibody

CAT. NO. APA07528

KEY FEATURES

Target	CLIP1	Source / Host	Rabbit
Reactivity	Human, Mouse, Rat	Clonality	Polyclonal
Applications	WB	Conjugation	Unconjugated
Form / Buffer	Liquid in 0.42% Potassium phosphate, 0.87% Sodium chloride, pH 7.3, 30% glycerol, and 0.01% sodium azide.		Storage at -20°C

BACKGROUND

Binds to the plus end of microtubules and regulates the dynamics of the microtubule cytoskeleton. Promotes microtubule growth and microtubule bundling. Links cytoplasmic vesicles to microtubules and thereby plays an important role in intracellular vesicle trafficking. Plays a role macropinocytosis and endosome trafficking.

APPLICATION

To ensure optimal assay performance, AREX recommends conducting reagent titration tailored to each testing system for optimal detection results.

WB	1:500 - 1:1000
----	----------------

*Results are sample-specific. Please refer to your local assay conditions and test parameters for reference.

PRODUCT OVERVIEW

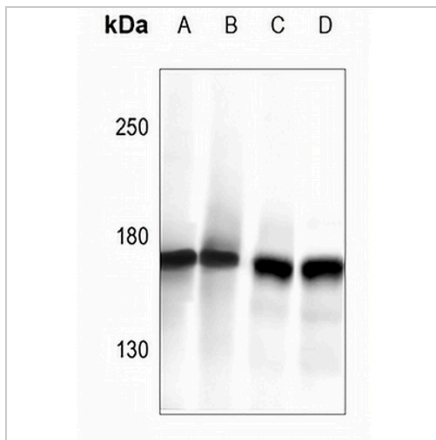
Description	Rabbit polyclonal antibody to CLIP1
Specificity	Recognizes endogenous levels of CLIP1 protein.
Antibody Type	Primary antibody
Immunogen	KLH-conjugated synthetic peptide encompassing a sequence within the C-term region of human CLIP1. The exact sequence is proprietary.
Purification	The antibody was purified by immunogen affinity chromatography.
Molecular Weight	Predicted: 162 kD; Observed: 170 kD
Form/Buffer	Liquid in 0.42% Potassium phosphate, 0.87% Sodium chloride, pH 7.3, 30% glycerol, and 0.01% sodium azide.
Alternative Names	CYLN1; RSN; CAP-Gly domain-containing linker protein 1; Cytoplasmic linker protein 1; Cytoplasmic linker protein 170 alpha-2; CLIP-170; Reed-Sternberg intermediate filament-associated protein; Restin
Gene Symbol	CLIP1
Entrez Gene	6249(Human); 56430(Mouse)
SwissProt	P30622(Human); Q922J3(Mouse)

*AREX continuously optimizes our products. Webpage content may not reflect the latest updates. For inquiries, please contact info@arexbio.com or your local distributor.

*Clone Number, Reactivity, Source/Host and Clonality can be found in the product name and Key Features section above.

DATASHEET**CLIP1 Rabbit Polyclonal Antibody**

CAT. NO. APA07528

DATA

Western blot analysis of CLIP1 expression in MEF (A), COS7 (B), HepG2 (C), MCF7 (D) whole cell lysates. (Predicted band size: 162 kD; Observed band size: 170 kD)

STORAGE

Store at 4°C short term. For long term storage, store at -20°C, avoiding freeze/thaw cycles.

NOTE

For Research Use Only. Not for diagnostic, therapeutics, prophylactic or in vivo use.